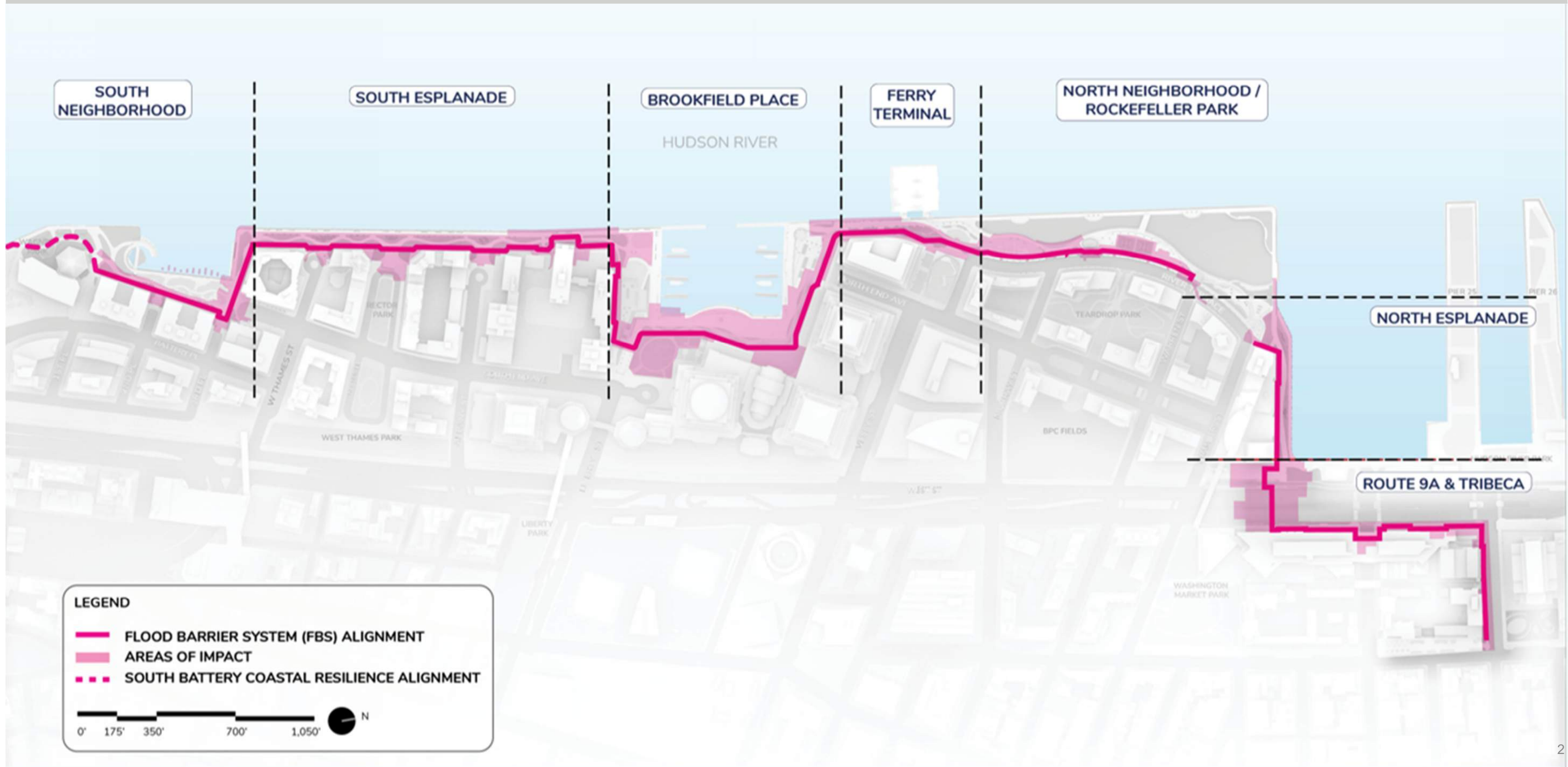


An aerial photograph of a city skyline, likely New York City, featuring a mix of modern glass skyscrapers and older brick buildings. In the foreground, a large green park with many trees is visible, situated next to a body of water. The sky is blue with scattered white clouds. A semi-transparent white box is overlaid on the center of the image, containing text.

North/West Battery Park City Resilience Project Board Update

June 3, 2026

Alignment



Current and Upcoming Construction

- Areas highlighted below indicate ongoing work; Vesey Street Tide Gate work to begin next week



South Cove Construction

Timeline:

- Construction is scheduled to last through Q3 2028.

Access:

- Access to the Esplanade available from West Thames and 1st Place
- 2nd Place, 3rd Place, and South End Avenue access closed through construction

3 month look-ahead:

- Surface demolition, erosion control, soil sampling
- Material Salvage (benches, lights, granite, pergola)
- Watermain work at 3rd and South End Ave in June
- Start of sheet pile installation along Riverwatch and South Cove Plaza in June
- Pile installation timing in front of Regatta dependent on agreements



Surface Demolition at South Cove

North Cove Marina Construction

Timeline:

- Construction is scheduled to last through 2030

Access:

- Access along west side of Brookfield Place closes July 6 through construction
- Liberty Street access closed through construction
- Kowsky Playground, Sirius Dog Run, and Police Memorial (except for NYPD) closed through construction

3 month look-ahead:

- Privacy wall demolition at northwest corner of Gateway in the next few weeks
- Pile installation to begin by second half of June
- Tree protection & removals
- Relocating underground utilities
- Surface demolition and salvage
- Excavation and grading



Trench for new ECS ductbank by Winter Garden

Albany Street – Tide Gate Installation

Timeline:

- Tide Gate installation expected to finish Summer 2026

Access to Esplanade:

- Restored along south side

3 month look-ahead:

- Pour roof for tide gate structure
- Connect storm sewer to manhole
- Install electrical ductbank
- Backfill surrounding area



Concrete walls for tide gate chamber poured

Rector Place – Tide Gate Installation

Timeline:

- Tide Gate installation expected to finish late 2026

Access to Esplanade:

- Maintained along south side

3 month look-ahead:

- Test pit to identify subsurface utilities and confirm future tide gate location
- Relocate telecom conduit and electrical ductbank
- Drill piles, install support of excavation (SOE), and start building tide gate structure



Test pit to identify subsurface utilities at proposed tide gate location

Chambers Street – Tide Gate Installation

Timeline:

- Tide Gate installation expected to finish by end of summer

Access:

- Pedestrian access maintained through construction

3 month look-ahead:

- Relocate water main as well as telecom and electrical ductbanks
- Excavate and prepare for tide gate install



Excavating the electrical trench

Stuyvesant Plaza – Tide Gate Installation

Timeline:

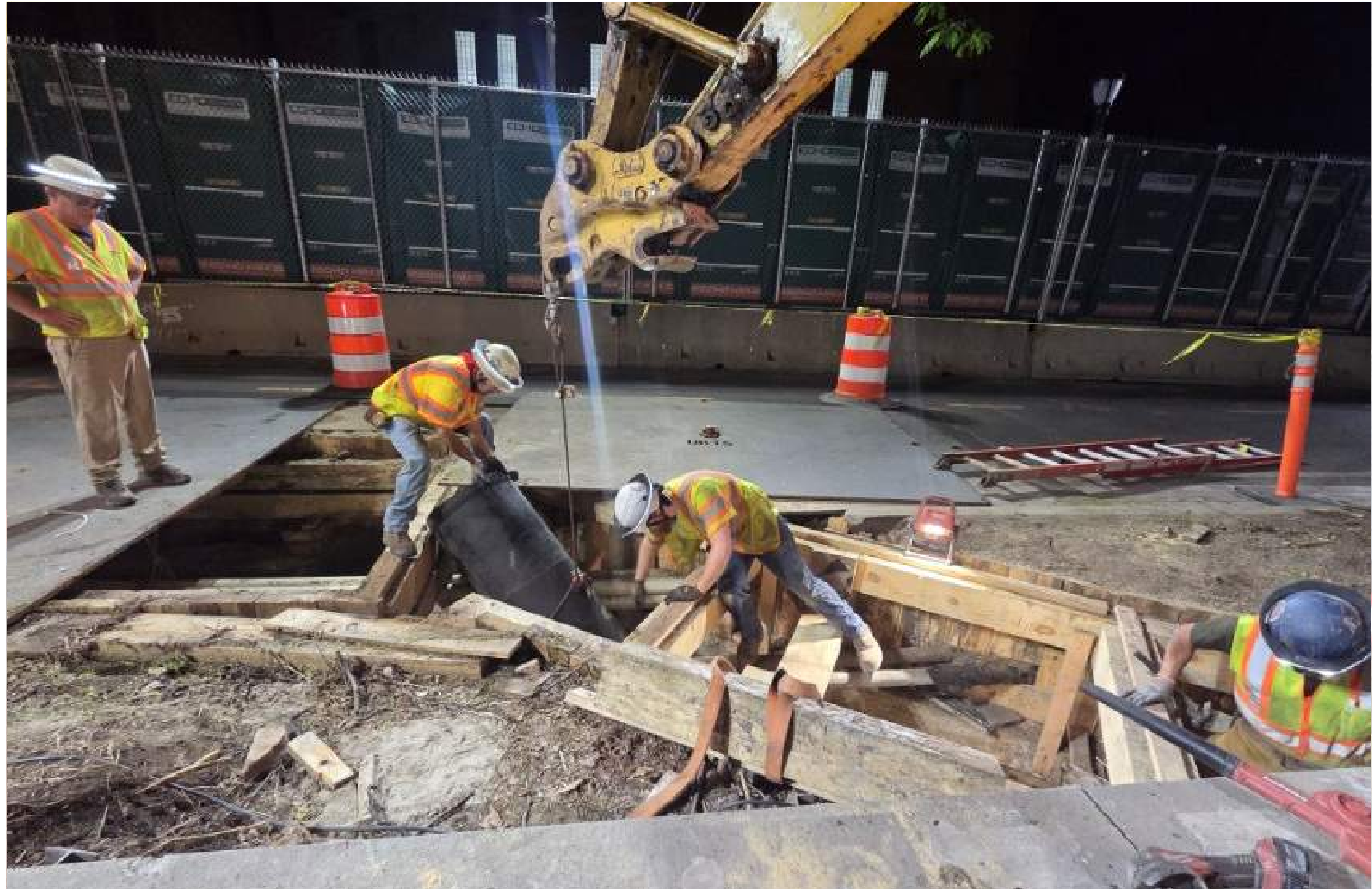
- Tide Gate installation expected to finish early 2027

Access:

- Pedestrian and bike access maintained through construction

3 month look-ahead:

- Relocate water main and electric ductbank in Route 9A during nighttime work
- Drill piles, install support of excavation (SOE), and start building subsurface drainage structures



Install of water main in Route 9a (nighttime work)

Vesey Place – Tide Gate Installation

Timeline:

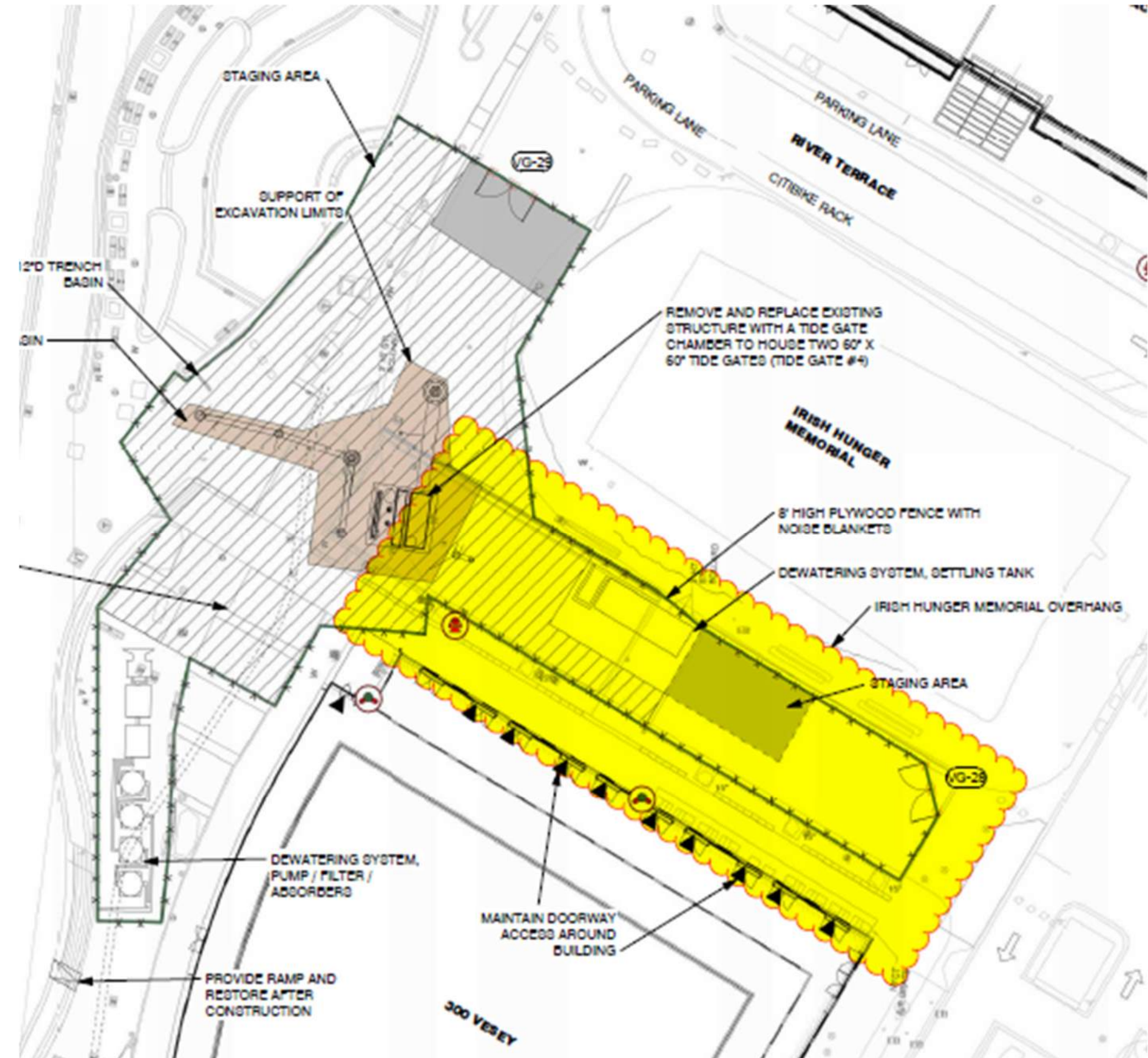
- Construction mobilization will begin as early as next week, work expected to finish by end of 2026

Access:

- Pedestrian access maintained through construction

3 month look-ahead:

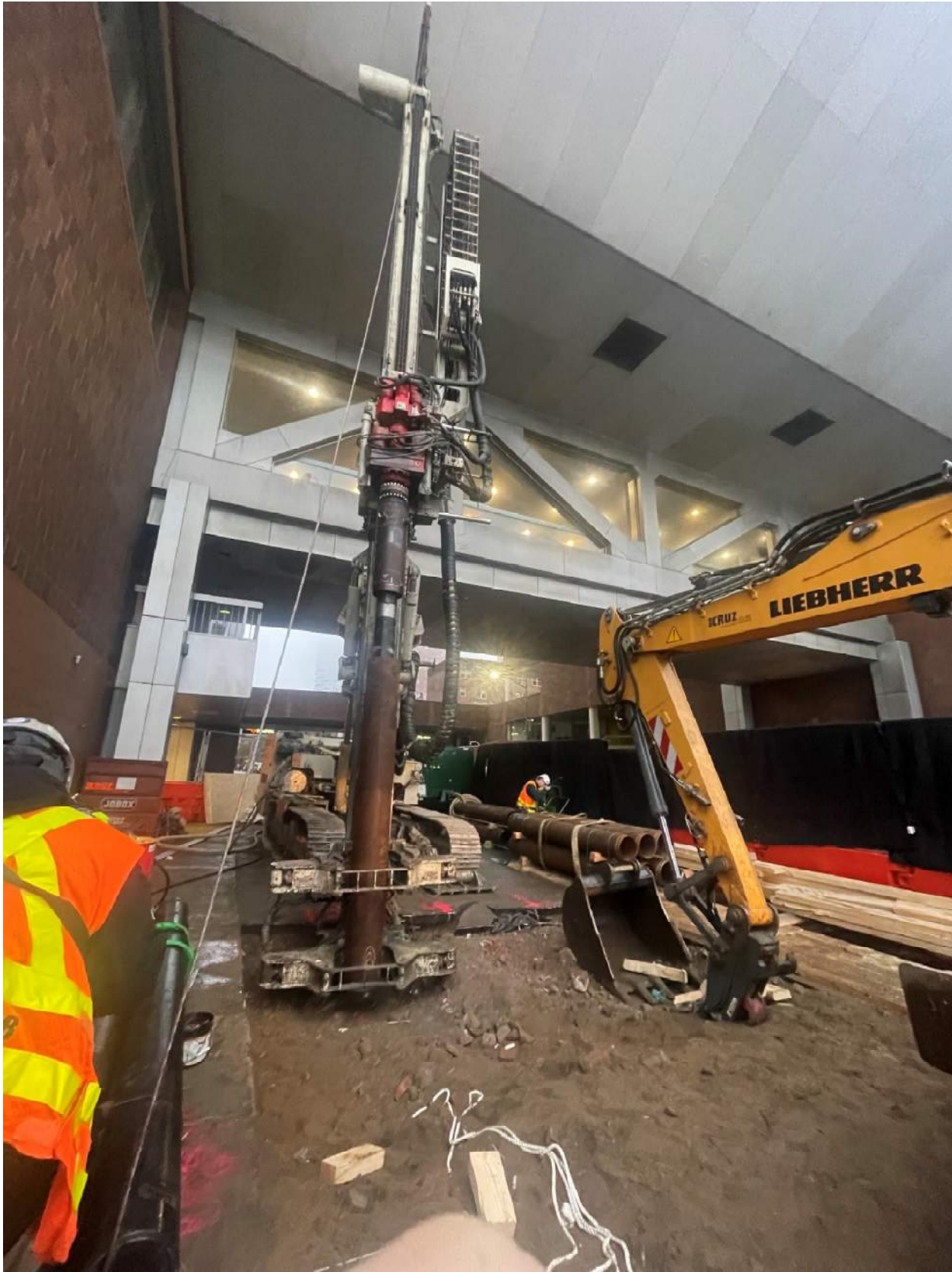
- Mobilize with fencing and noise blankets
- Site prep including tree protection, salvage and surface demo
- Relocate electrical ductbank



NW Resiliency

Look Ahead

Micropile Drilling



Jet-Grout



Drilled Shafts

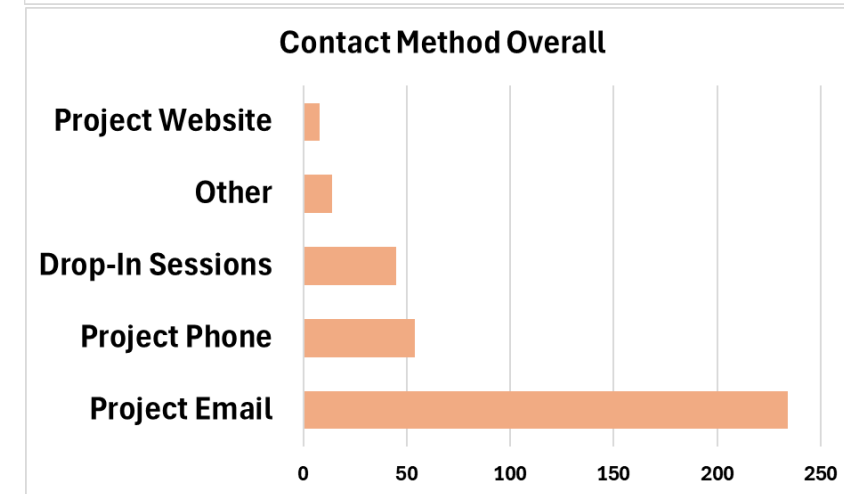
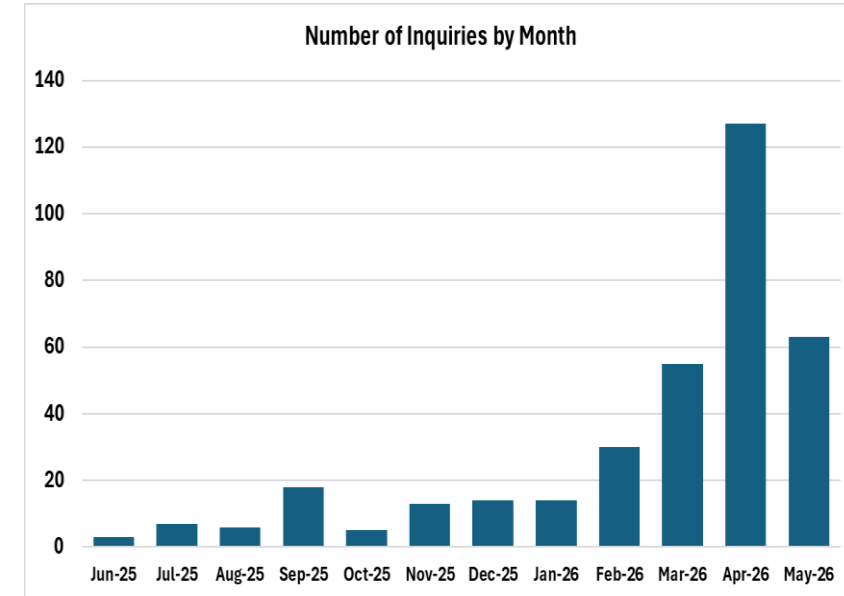
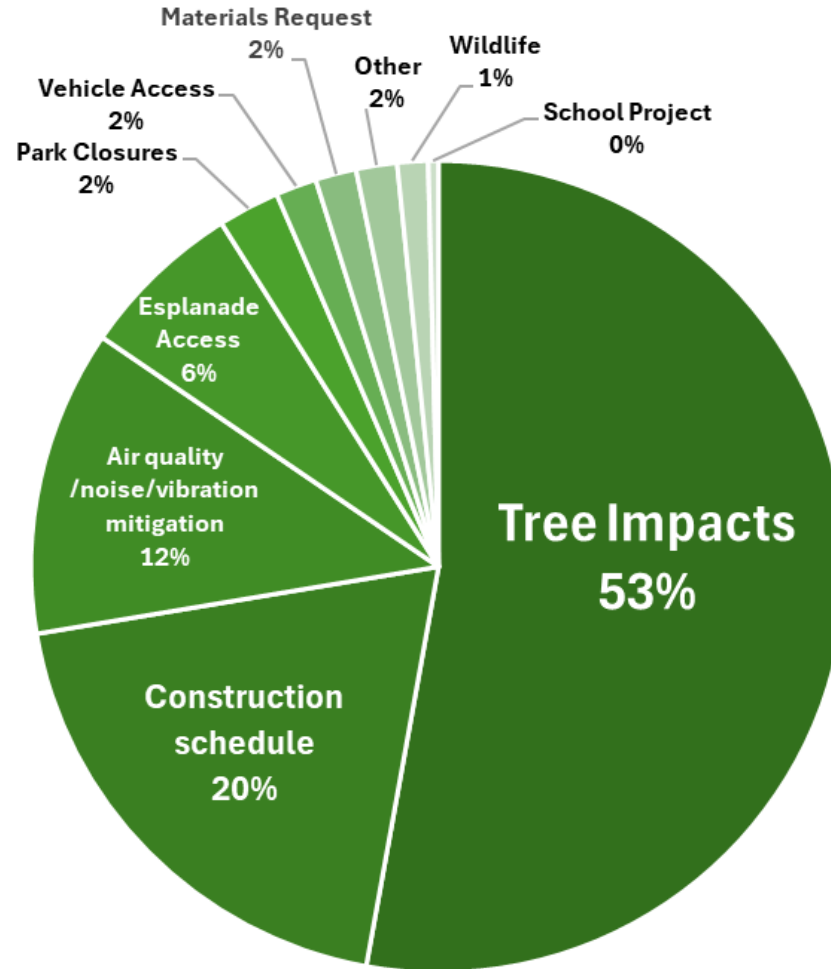


Soil Mixing



Community Outreach: Inquiry Type & Volume

- Since June 2025 the project team has received over 400 total individual inquiries regarding the project.
- **Have received 250+ issue inquiries since March 20**
- The top topics were:
 - Tree Impacts
 - Construction Schedule
 - Environmental mitigation
- New inquiries driven in large part by **Tree removals at Reach 7**.



Trees

- The NWBPCR Project will result in the **planting of an estimated 525 trees to offset an estimated 500 removals** (per the updated Tech Memo issued in December 2025), a net increase of +25 trees; the estimate in the FEIS was 450 replacements vs. 435 removals (+15)
- **40 tree removals are “conditions” removals** – meaning trees in poor health that would have required removal even without any resiliency work occurring.
- BPCA **updated tree maps and graphics** which are now available on the project website [here](#)
- Though non-binding on the NWBPCR Project, U.S. Army Corps of Engineers guidance- including the recommendation to establish a **15-foot vegetation “buffer zone” in reference to tree planting near the flood wall- is still considered by FEMA in their review of the project for accreditation**, as trees can impact system structural and operational integrity
- Utilizing carefully-considered criteria- such as tree size and species, location, elevation and wall foundation type- the N/W engineering team identified locations for **60 trees to be planted within the 15-foot “buffer zone”**

New Tree Canopy

- New trees will be planted during the landscaping phase each area under construction- typically at the end
- Tree purchases will be timed to allow for **uninterrupted growth in nurseries before planting** occurs
- Tree canopy will be far **more diverse (age and species)** than it is today thereby creating a more resilient and functional urban ecosystem. The benefits include:
 - Provide a **range of different habitats** for wildlife
 - **Extend the blooming season** for pollinators and visual interest
 - Increased **resistance to disease, salinity, heat, and drought**
- **68 different species** to be planted, including:
 - American Holly
 - White Oak
 - Winter King Hawthorn
 - River Birch
 - Tupelo
 - Sweetbay Magnolia



Winter King Hawthorne



River Birch



Tupelo



American Holly

Community Outreach: Approach and Goals

Build Understanding

Creating opportunities for people to learn about the project, ask questions, raise concerns, and receive timely, accurate information.

- In-person conversations
 - Drop in sessions
 - Mobile info bike
 - Town halls
- Building-level engagement
 - Meeting with south BPC buildings re construction and/or easements
- Project-related education and engagement opportunities
 - Earth month panel
 - Waterfront conference panel – Michael Kimmelman moderator
- Timely response to project inquiries
 - Inquiries acknowledged within 24 hours, additional information provided in follow up email as soon as possible

Tell the Story

Proactively communicating project goals, benefits, milestones, and impacts through earned, owned, and shared channels.

- Proactive press engagement
 - Broadstreet tree article
 - CM Marte/NYLCV Op-Ed
 - CBS/Gothamist
- Lean into programming storytelling
 - Great coverage for BPCA programming in NYTimes, Gothamist, AMNY etc
- Digital and print communications
 - Construction Newsletter
 - Project website
 - Social
 - Postcards, posters, flyers



Newsletters

CRAIN'S NEW YORK BUSINESS

Sign

Op-ed: The benefits – and urgency – of coastal resiliency

Share



Community Outreach: Approach and Goals

Partner with Trusted Voices

Strengthening connections with community partners, elected officials, and neighborhood leaders to support project awareness, understanding, and engagement.

- Organizational Partnerships
 - Waterfront Alliance
 - NYLCV/CM Marte Op-Ed
 - Mayor's Office of Environmental Justice
- Elected officials and CB1
 - Construction Advisory Committee
 - Regular elected official check ins
 - CB1 BPC Committee

Improve the Experience

Helping people navigate project impacts and access information when and where they need it.

- Responsive wayfinding
- Allied presence where appropriate



May 15: Northwest Battery Park City Resiliency Project: 4rd Construction Advisory Committee Meeting



New York State Senator Brian Kavanagh
17 subscribers

Subscribe

0



Share

