



**Community  
Feedback Session**

# **Street End Design Meeting #3**

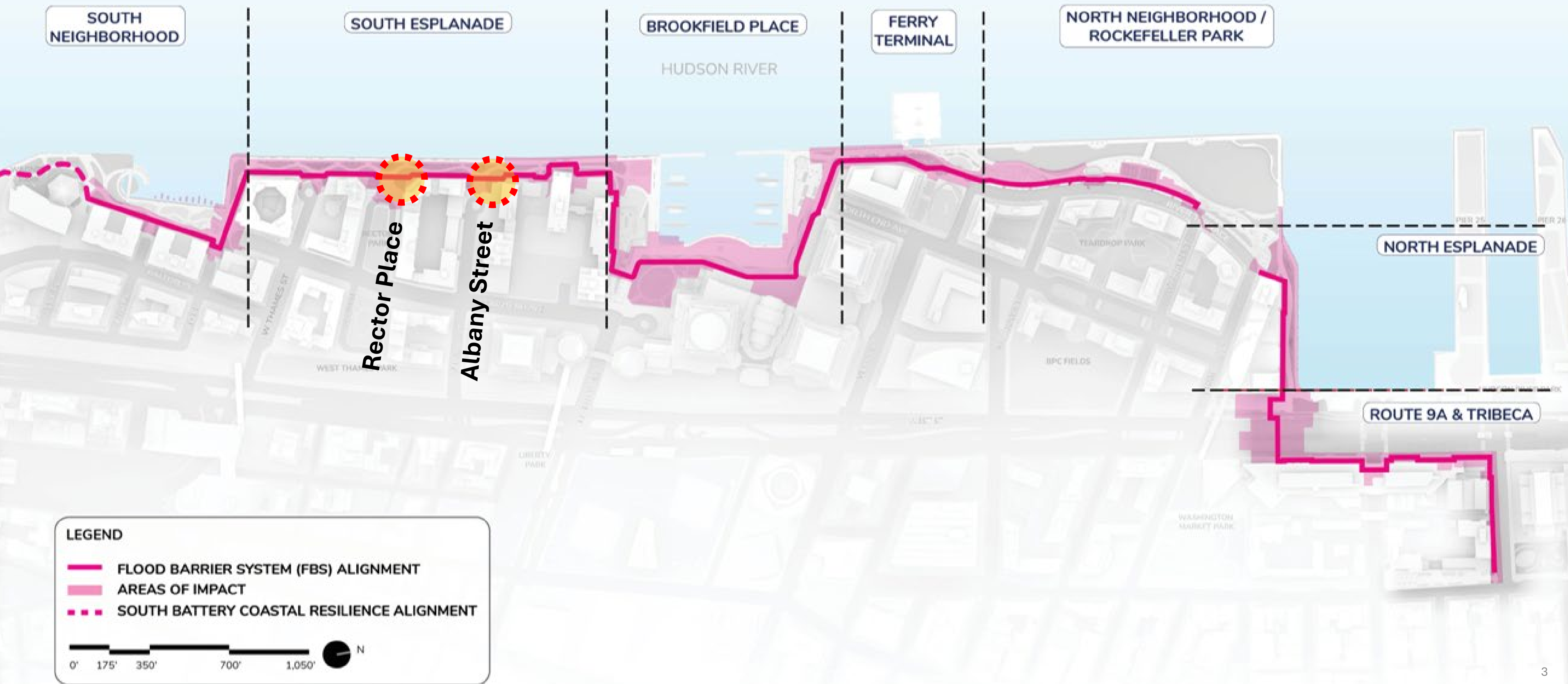
**May 20, 2026**



# Agenda

- 1. Albany and Rector Street Ends Current Designs**
- 2. Feedback and Design Impacts**
- 3. Proposed Designs**
- 4. Discussion and Next Steps**

# Project Background- Street End Locations



# Rector Place Street End Constraints

## Rector Place | Constraints

**LEGEND**

- FLOOD BARRIER SYSTEM (WALL)
- FLOOD BARRIER SYSTEM (DEPLOYABLE)
- - - EXISTING RELIEVING PLATFORM
- EXISTING TREES
- NEW TREES
- - - LIMIT OF WORK

0' 10' 25' 50'

N

Liberty Terrace

Liberty House

- Constraints:**
- Recommended 15ft tree offset from FBS
  - 12ft minimum clearance for EVA access
  - DEP 6ft access offset for new tide gates
  - EVA and maintenacen access to utilize existing curb cuts

12' MIN EVA ACCESS

EXISTING CURB CUTS

6FT TIDE GATE ACCESS OFFSET

BUILDING ENTRY

15' FBS TREE OFFSET

15'

# Opportunity for Redesign

## Rector Place | Constraints

### LEGEND

- FLOOD BARRIER SYSTEM (WALL)
- FLOOD BARRIER SYSTEM (DEPLOYABLE)
- EXISTING RELIEVING PLATFORM
- EXISTING TREES
- NEW TREES
- LIMIT OF WORK



Liberty Terrace

Liberty House

### Constraints:

- Recommended 15ft tree offset from FBS
- 12ft minimum clearance for EVA access
- DEP 6ft access offset for new tide gates
- EVA and maintenacen access to utilize existing curb cuts

15' FBS TREE OFFSET

6FT TIDE GATE ACCESS OFFSET

BUILDING ENTRY

12' MIN EVA ACCESS

EXISTING CURB CUTS

# Albany Street End Constraints

## Albany Street | Constraints

### LEGEND

- FLOOD BARRIER SYSTEM (WALL)
- FLOOD BARRIER SYSTEM (DEPLOYABLE)
- EXISTING RELIEVING PLATFORM
- EXISTING TREES
- NEW TREES
- LIMIT OF WORK



TIDE GATE AND 6FT OFFSET

15' FBS OFFSET

12' MIN EVA ACCESS

DEP MAN-HOLE

18'10"

EXISTING CURB CUTS

### Hudson Towers

### Gateway Apartments

#### Constraints:

- 15ft offset from FBS
- 12ft minimum EVA
- Tide gate and 6ft offset
- Tide gate access
- Existing curb cuts out of LOW

# Opportunity for Redesign

## Albany Street | Constraints

**LEGEND**

- FLOOD BARRIER SYSTEM (WALL)
- FLOOD BARRIER SYSTEM (DEPLOYABLE)
- EXISTING RELIEVING PLATFORM
- EXISTING TREES
- NEW TREES
- LIMIT OF WORK

0' 10' 25' 50'

N

TIDE GATE AND 6FT OFFSET

15' FBS OFFSET

12' MIN EVA ACCESS

DEP MAN-HOLE

18'10"

EXISTING CURB CUTS

**Hudson Towers**

**Gateway Apartments**

**Constraints:**

- 15ft offset from FBS
- 12ft minimum EVA
- Tide gate and 6ft offset
- Tide gate access
- Existing curb cuts out of LOW

# 1. Activities and Amenities

## Feedback Summary:

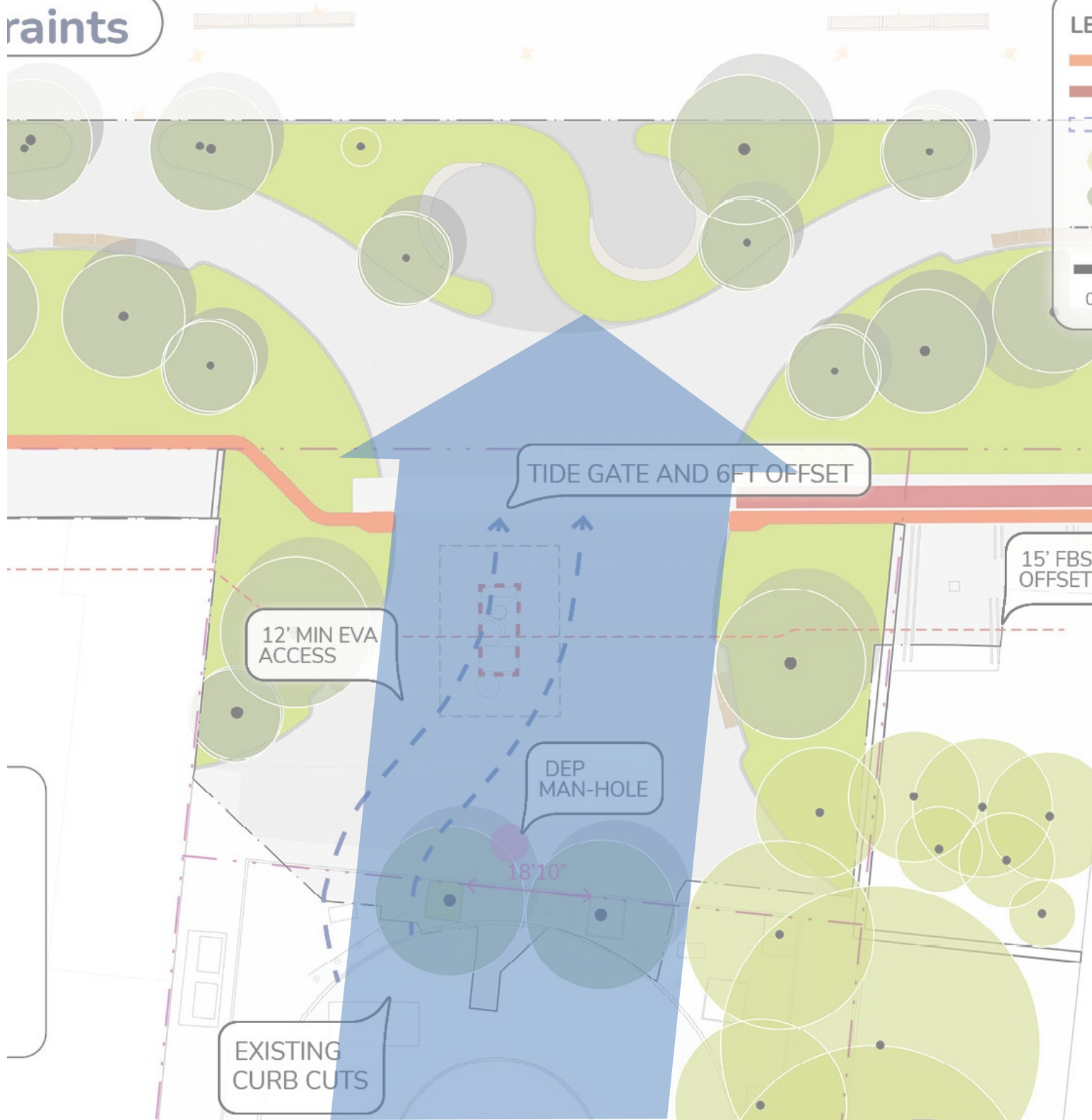
- **Support for Pedestrian Access (89%) and Quiet Spaces (78%), not Gathering Spaces (28%)**
- **Landscaping (72%) more popular as an amenity than Seating (57%), Shading (50%), Art (24%) not popular**

## Impact to Street End Design:

- **No obstacles to pedestrian access or seating in the middle- preference for quiet spaces on the sides with landscaping**



# Use Diagram: Clear Access to Esplanade



Rector Place

Albany Street

## 2. Layout Concepts

### Feedback Summary:

- Preference for **open, simple street end design**
- Offset seating and public spaces **at least 20' from residential facades (57%)**
- Support for both **straight and asymmetrical layouts**

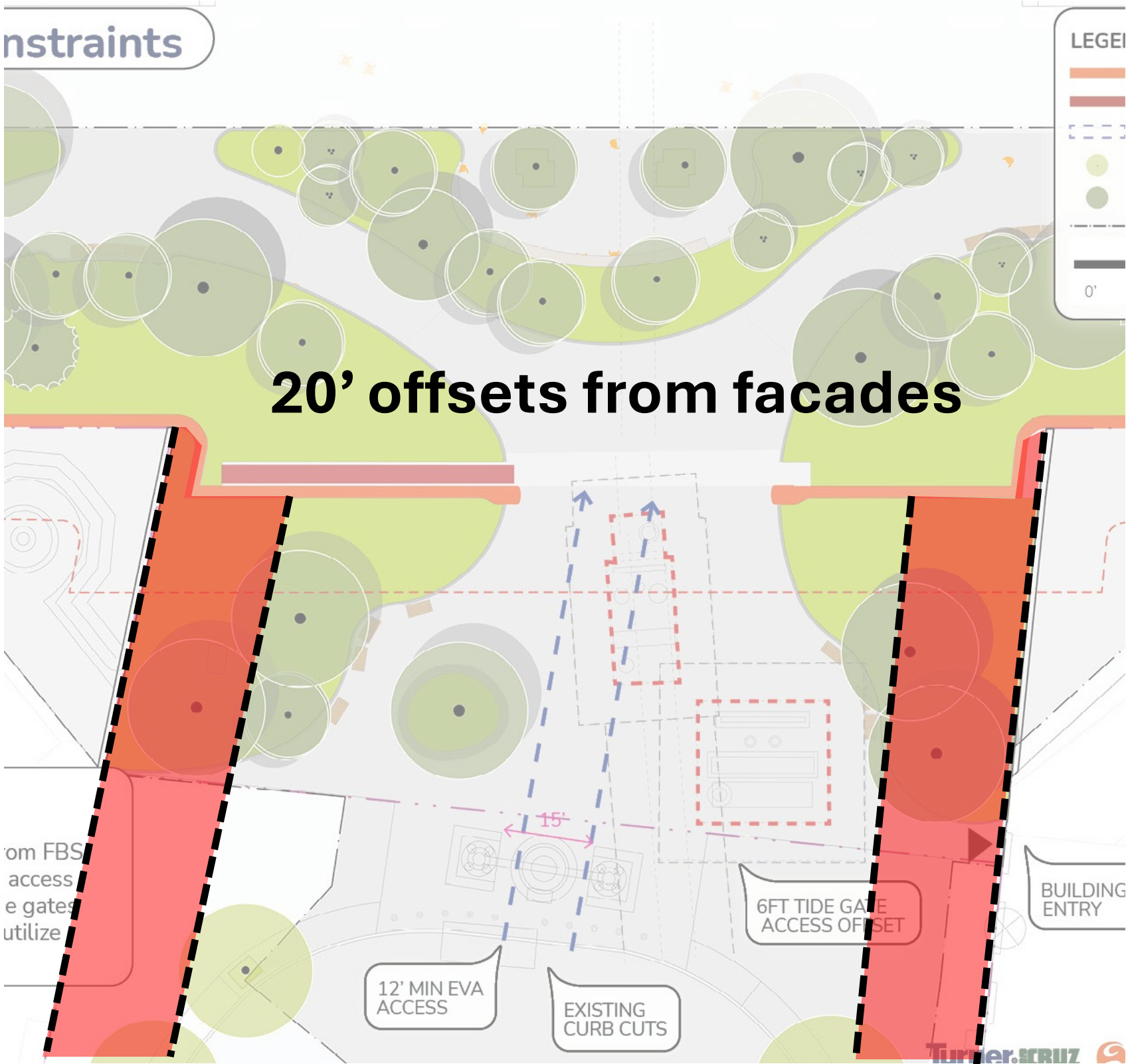
### Impact to Street End Design:

- Openness in the center with views to the Esplanade, and **seating to the side, offset from buildings**

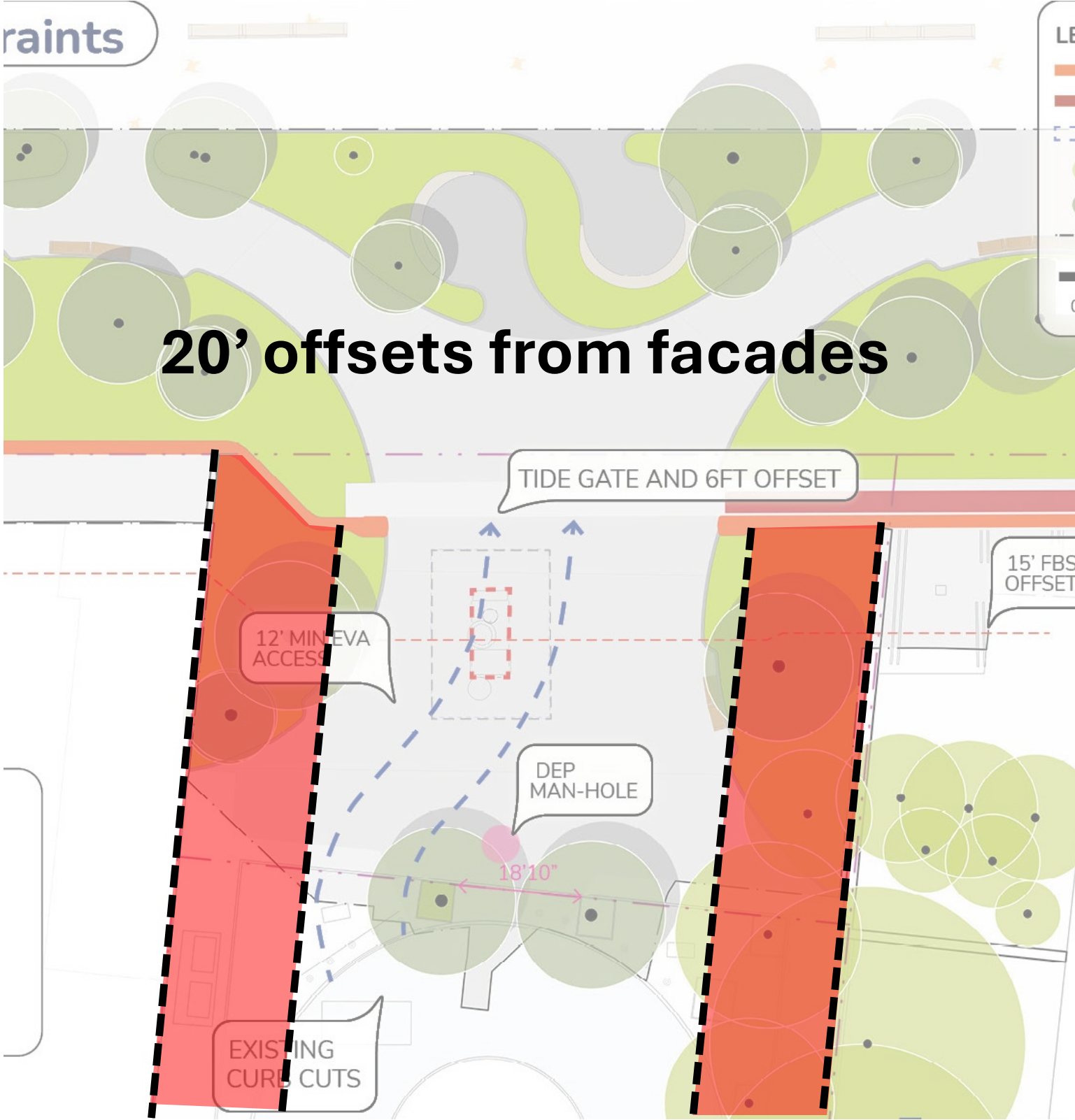


*Existing Seating at Albany Street is too close to Hudson Tower*

# Use Diagram: Building Offsets for Seating



Rector Place



Albany Street

# 3. Seating Ideas

## Feedback Summary:

- Strong preference for **Benches (64%)**, not Seating with Tables (35%), Linear (17%), Single Chairs (13%), or Modular (9%)
  - "We want World's Fair benches because they have **back support and match the esplanade**, not modular furniture or brightly colored objects."

## Impact to Street End Design:

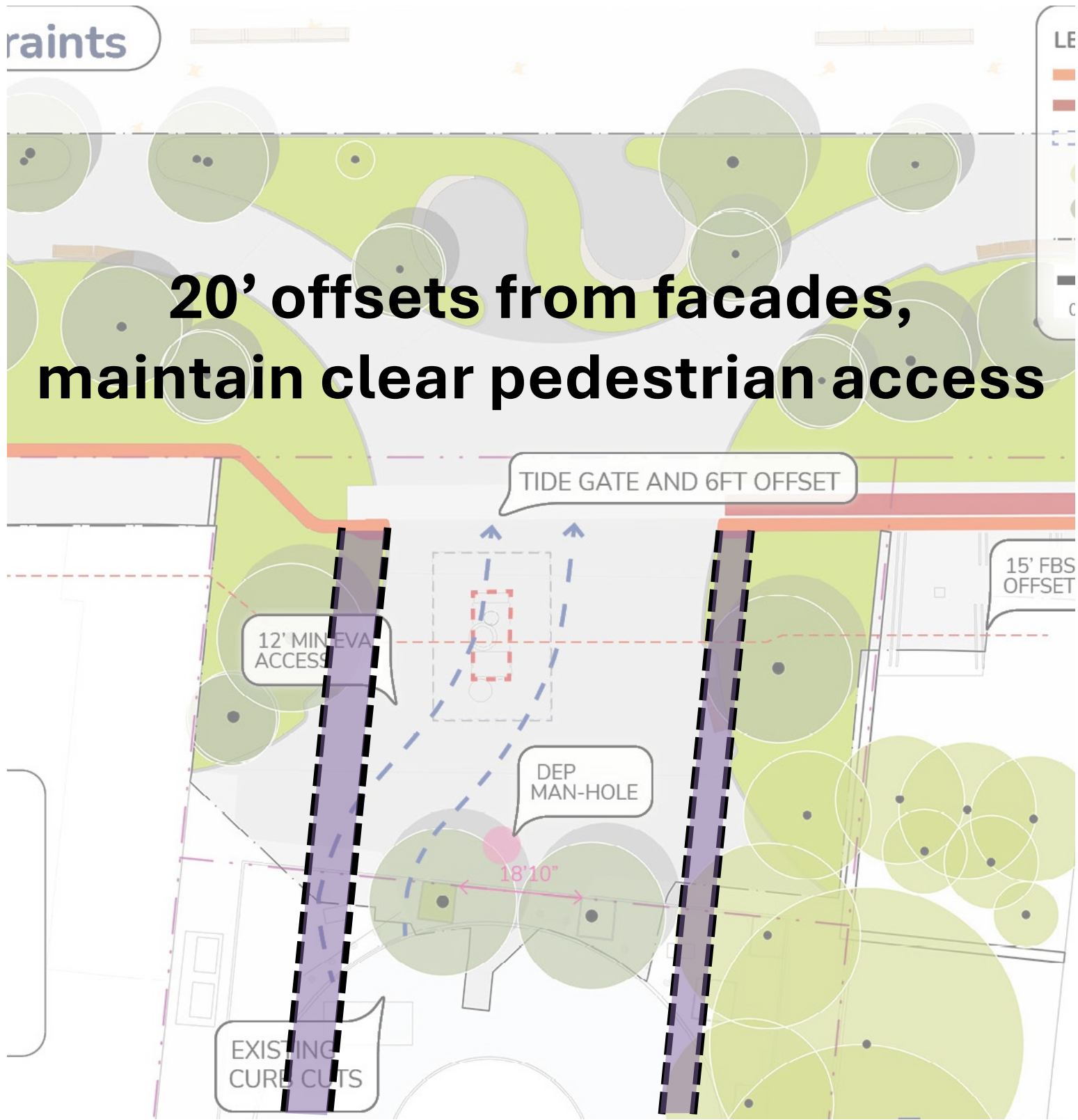
- **World's Fair benches**, not picnic tables or communal seating



# Use Diagram: Seating



Rector Place



Albany Street

## 4. Landscaping and Shading

### Feedback Summary:

- **Flowers (76%), Trees (70%), Bushes (63%), Lower Plantings (56%),** not Planters (13%)
  - "We would like **as much natural shade from trees as possible**. We do not want umbrellas or artificial shade that do not fit neighborhood character."

### Impact to Street End Design:

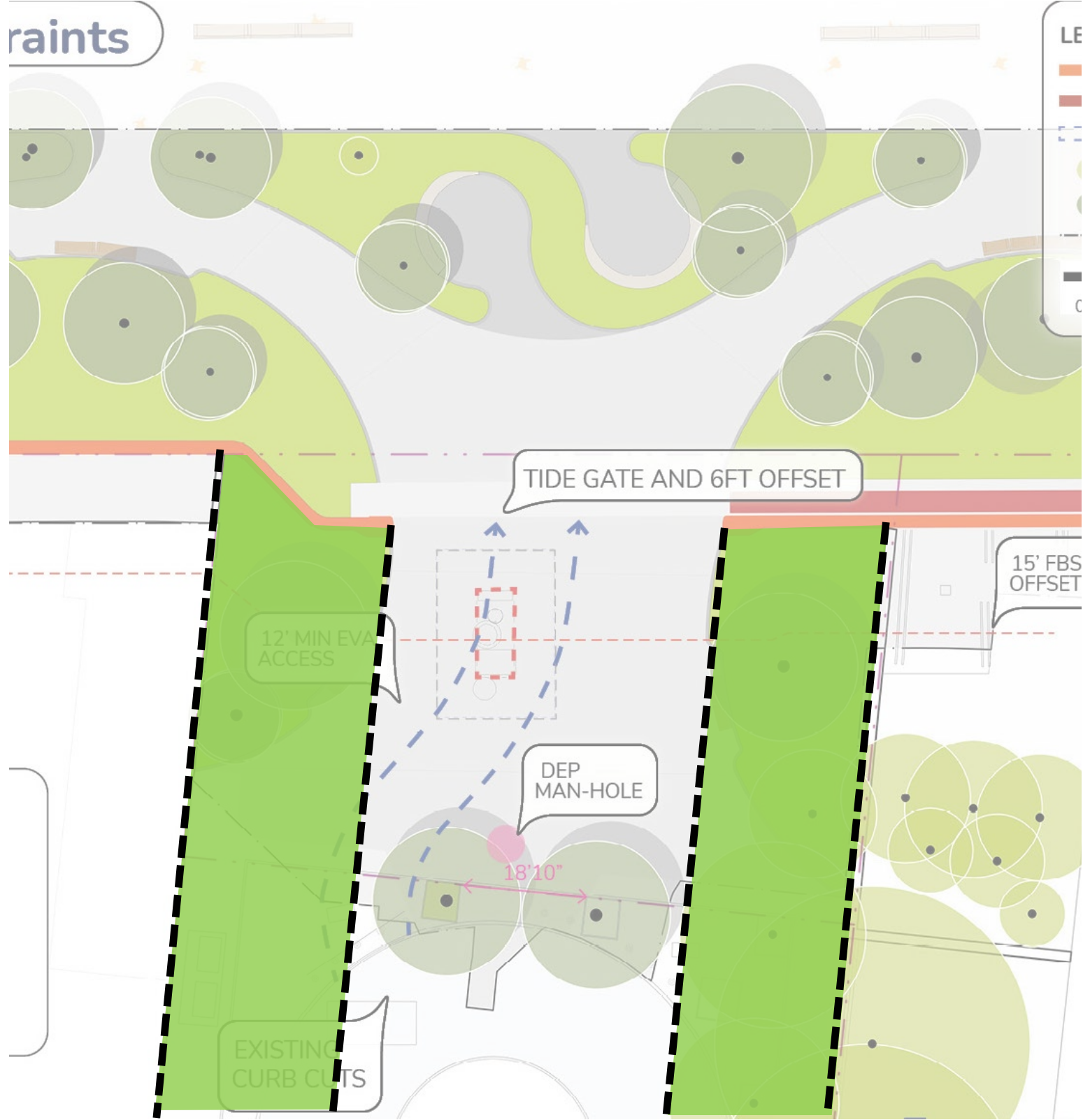
- Landscaped areas will incorporate **flowers, bushes, and trees** where possible given constraints



# Use Diagram: Landscaping and Shading





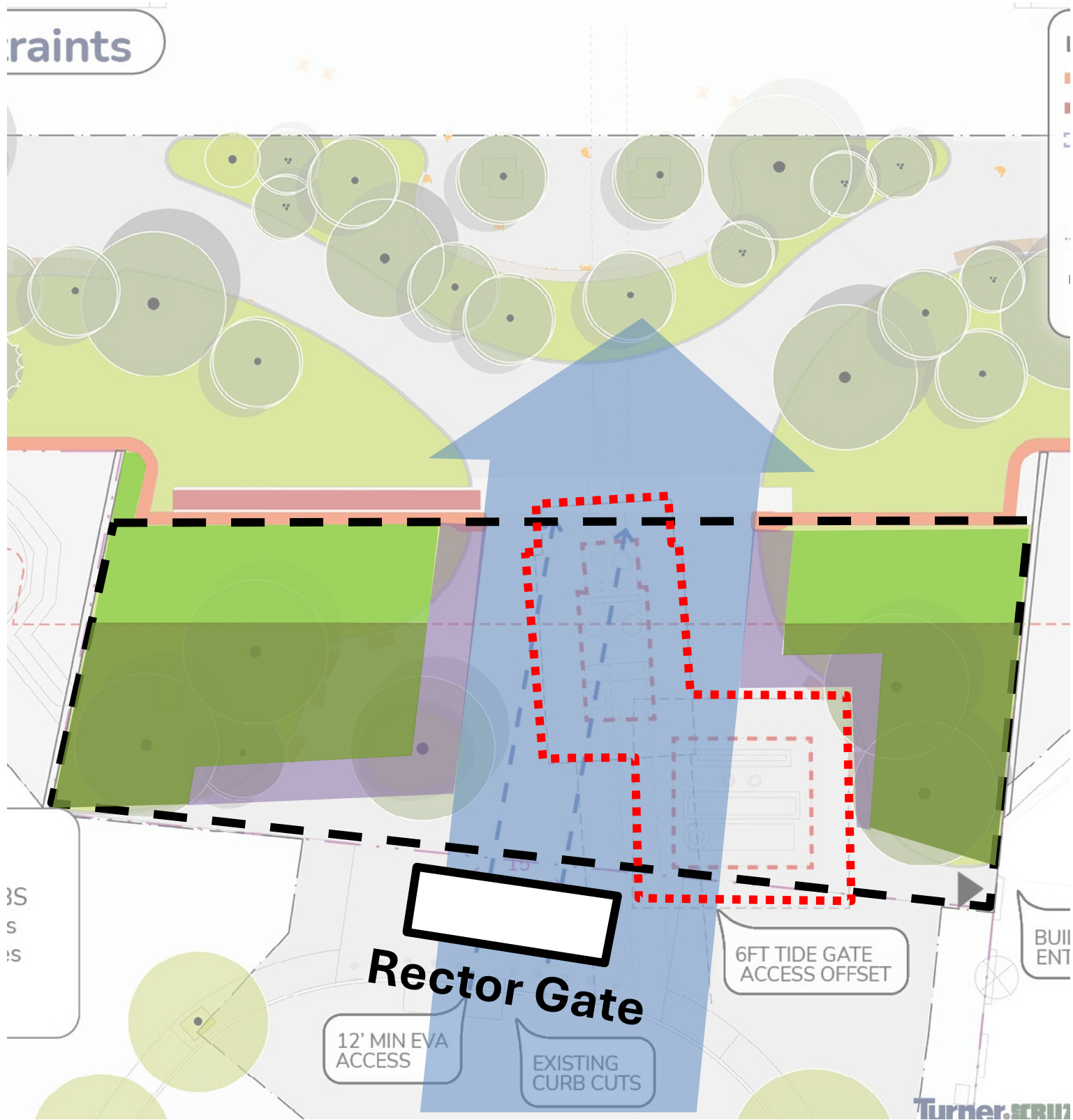
Rector Place



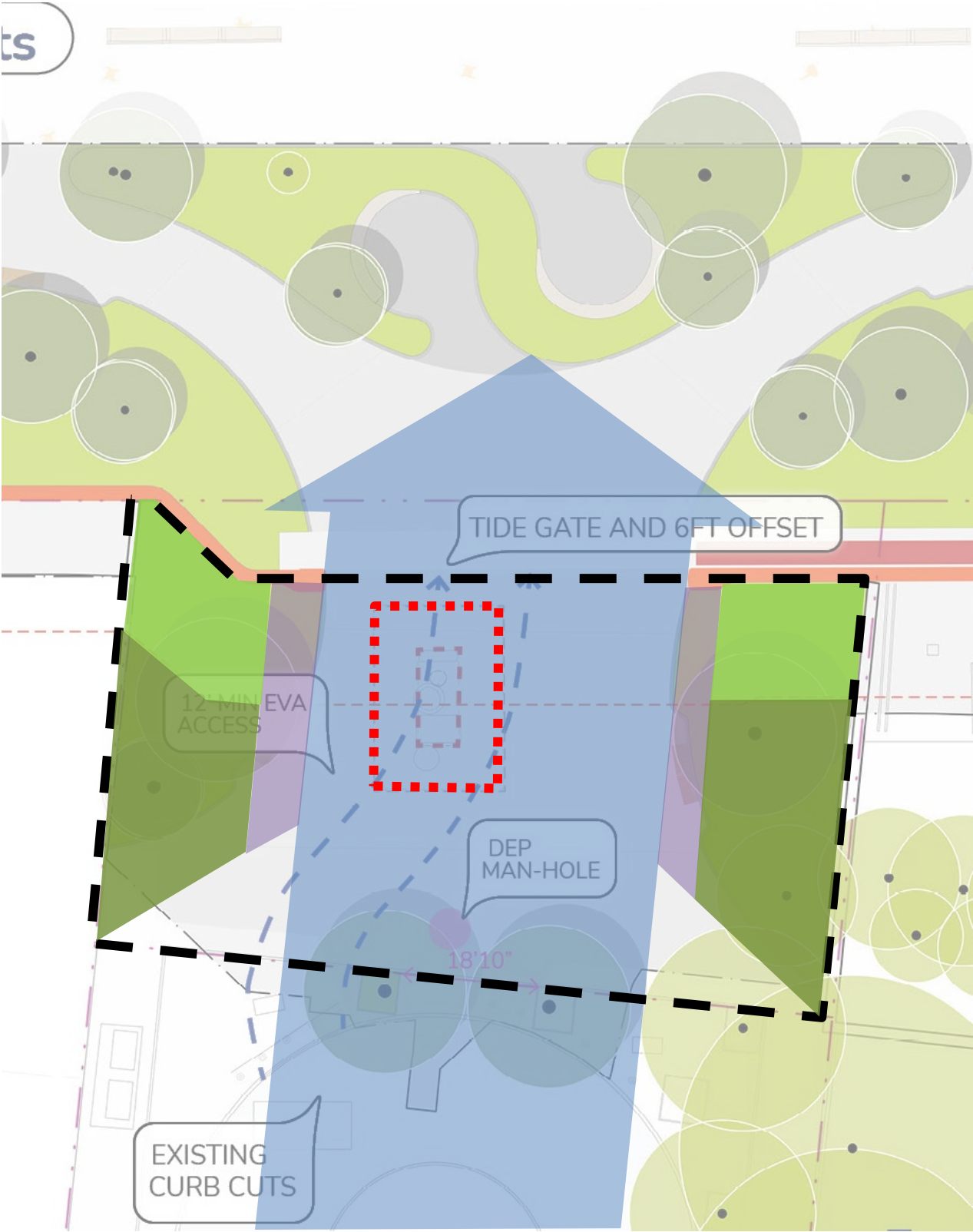
Albany Street

# Combined Uses and Constraints Diagram

-  Clear Access
-  Seating
-  Low Planting
-  Trees
-  Opportunity for Redesign
-  DEP Tide Gate Access



Rector Place



Albany Street

# Albany Street Proposed Plan:



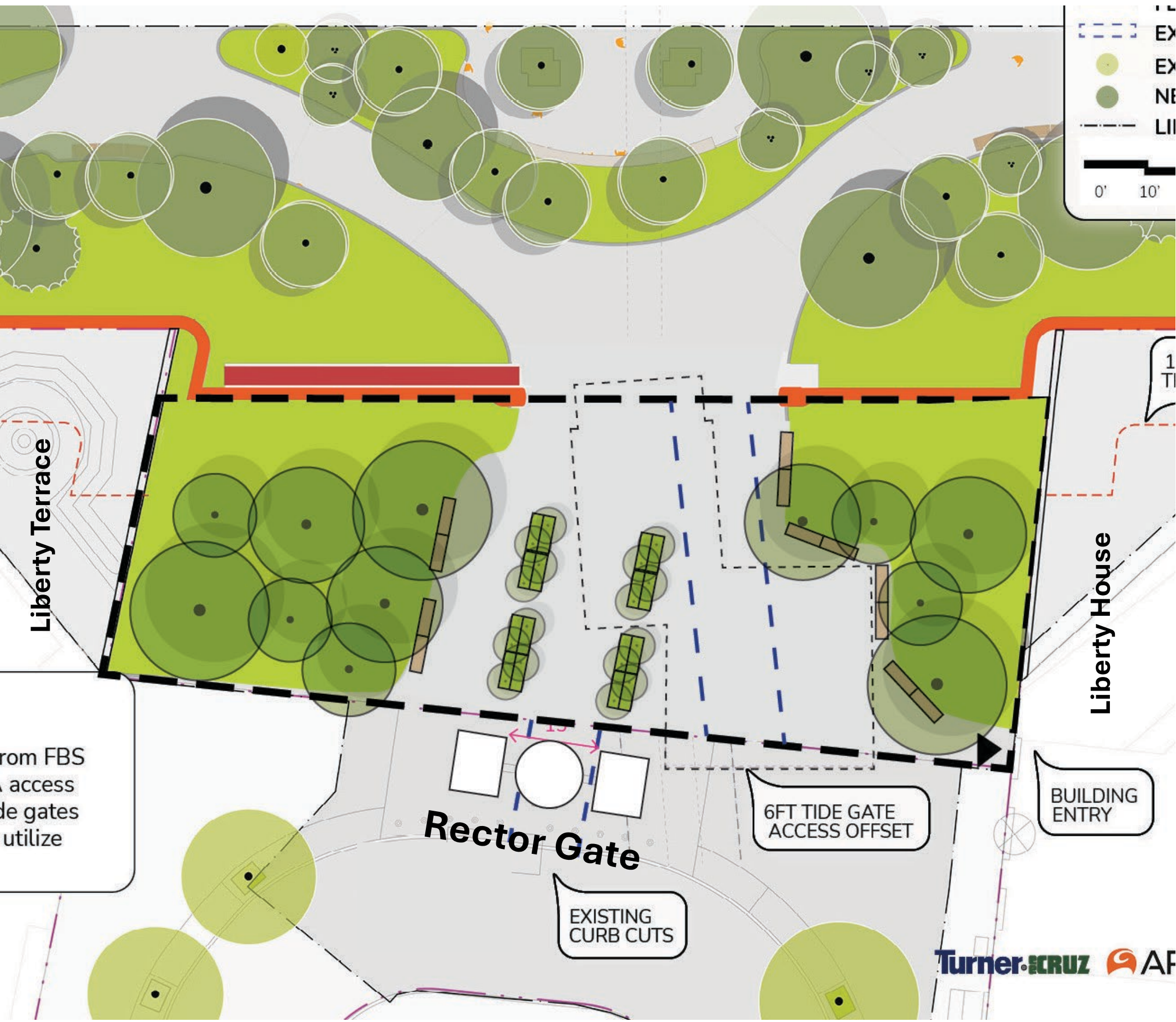
- **Maintains clear access and views to Hudson River**
- **Provides flexible spaces for gathering and meals**
- **Potential addition of trees compared to the current design**
- **Clear access for DEP and Emergency Vehicle Access**
- **Sets back seating from residential facades**
- **Simple layout**

# Table with Benches Option: Multiplicity



*Alternate Option: smaller, moveable chairs and tables like Bryant Park and other NYC locations*

# Rector Place Proposed Plan: Moveable Planters



- Provides low planters that can accommodate trees or lower plantings
- Honors axial layout of Rector Place
- Adds 6 more World's Fair Benches than current design
- Potential addition of trees compared to the current design- extended planted area and opportunities for shade
- Clear access for DEP and Emergency Vehicle Access (planters can be moved)

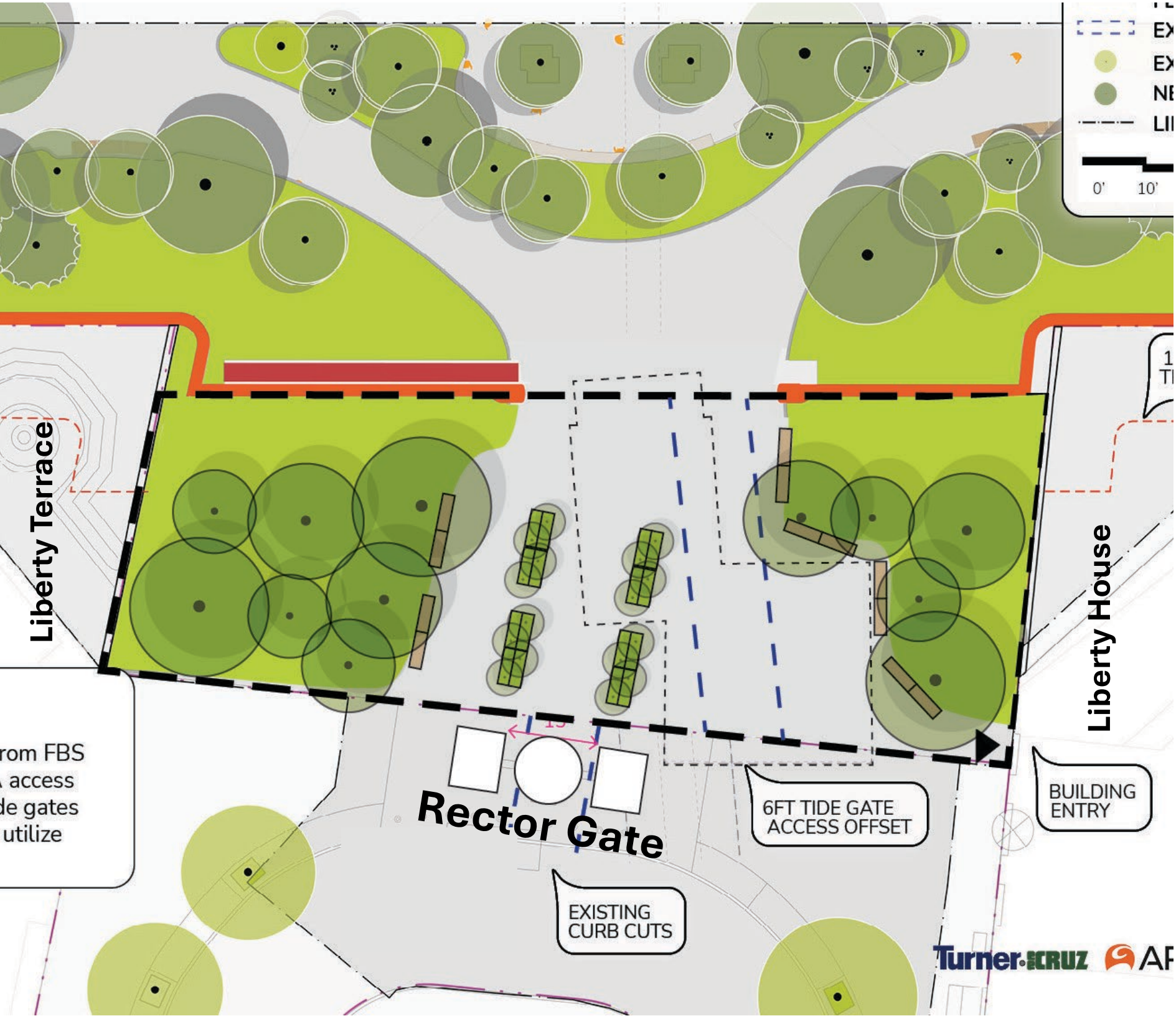
# Rectilinear Planter Option: Planters Unlimited

- Made of fiberglass
- Comes with drainage holes
- Moveable with forklift
- Various lengths available (24" x 24" x 60/72/96")
- Various colors available:

Color: \*



# Discussion



Rector Place



Albany Street

# Next Steps

- **We will continue to provide design and construction updates**
- **Revisit this design toward the end of construction (2030) to scope it as a capital project**



**Subscribe to our  
Construction  
Newsletter!**



# Appendix

# Albany Street End- Current Design



# Albany Street Esplanade- Current Design



Room Accessible  
From Forest Path

Precast  
Concrete Bench

Room Accessible  
From Esplanade

+ 11.5'

# Rector Place Street End- Current Design



FBS Wall

Wall Height:  
8' from Path  
(DFE +19.5')

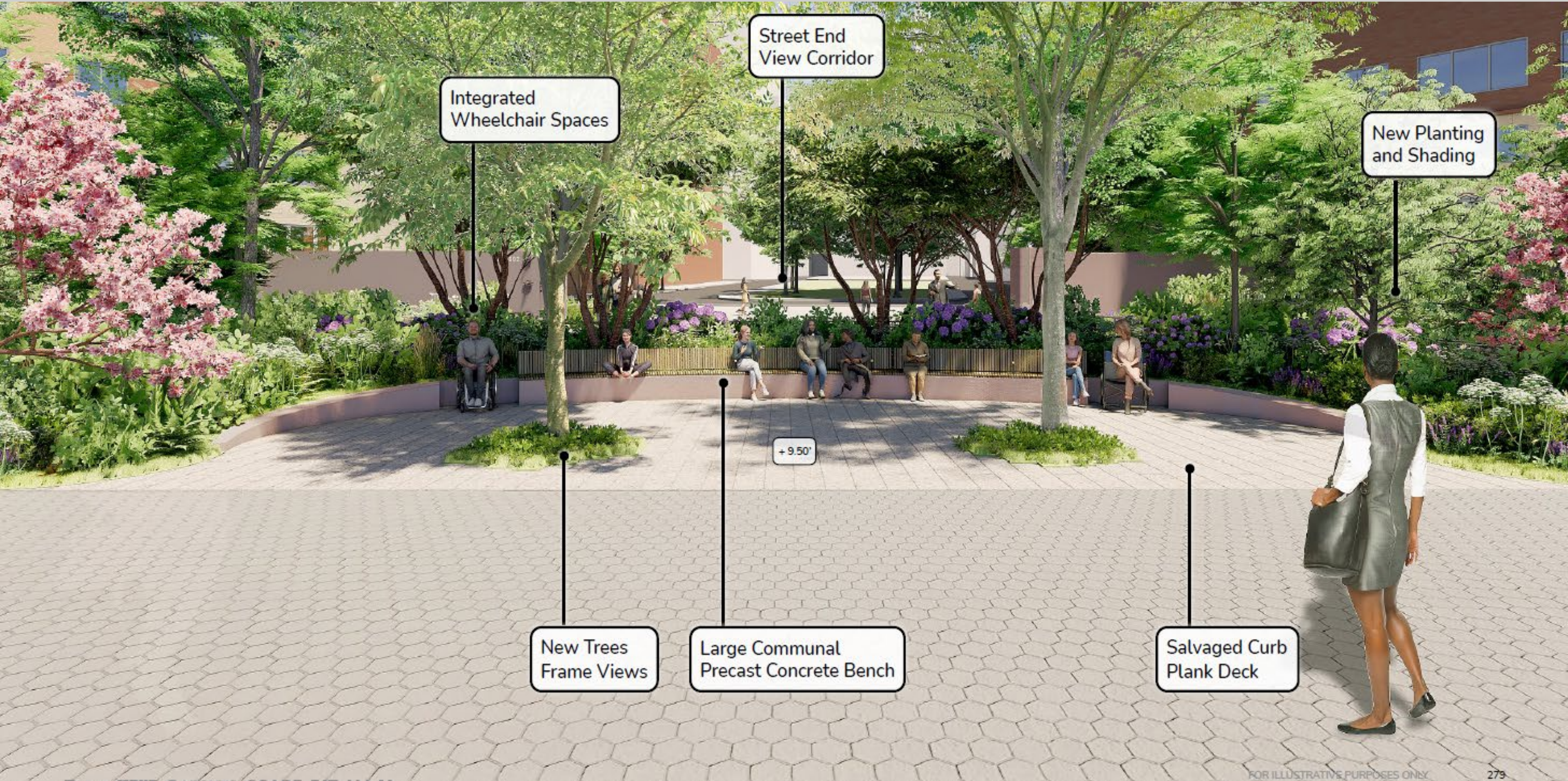
+ 11.50'

8'

SOUTH

+19'  
+18'  
+17'  
+16'  
+15'

# Rector Place Esplanade- Current Design



Integrated Wheelchair Spaces

Street End View Corridor

New Planting and Shading

+ 9.50'

New Trees Frame Views

Large Communal Precast Concrete Bench

Salvaged Curb Plank Deck