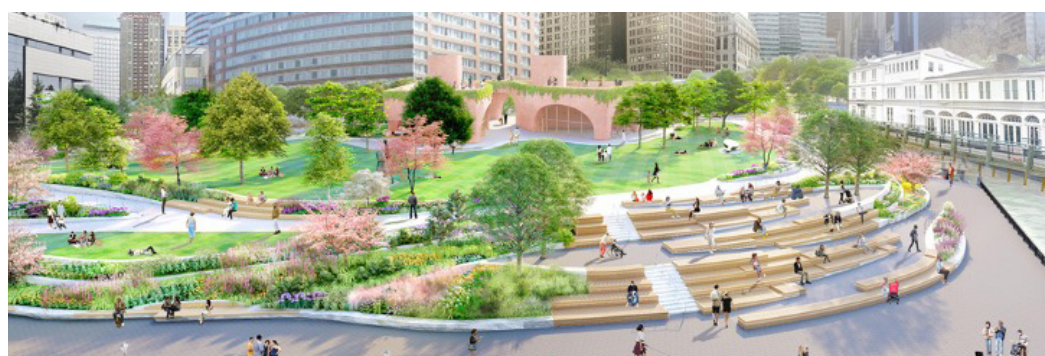


South Battery Park City Resiliency (SBPCR) Project New York, New York

The South Battery Park City Resiliency (SBPCR) Project is the second component of the Lower Manhattan Coastal Resiliency Master Plan and 13th national project to earn WEDG Verification. Led by the Battery Park City Authority and AECOM's design team, this project aims to protect the area spanning the Museum of Jewish Heritage, Wagner Park, and Pier A Plaza, as well as adjacent Battery Park City and other portions of Lower Manhattan from intensifying climate change impacts. The project uses elevation changes to incorporate seawalls and other resilience features into the design of the site and creates new habitat space along the Pier A inlet.



Pier A Inlet



Wagner Park Overview

- Growth of habitat space along the Pier A inlet will emerge in place of current stone riprap. Plantings on stepped terraces in the intertidal zone will bring marine life to the site. Use of EConcrete cladding on the bulkhead adjacent to the Pier A inlet will also help encourage marine growth. Ecological improvements will provide habitat for striped bass, scup, blue fish, oysters, lobsters, blue crabs, ring-billed gulls, and great blue herons.
- Maritime meadow spaces full of native grassland, shrubs, and tree species that provide nectar for bird and insect pollinators will replace unproductive gardens and enhance biodiversity of the site. Specifically curated plants will provide erosion resistance and salt tolerance during storm events.
- ▬ Seawalls and other protective features are integrated into the landscape of the site via a network of planters, stepped benches, and winding pathways through native planting areas that provide protection without diminishing views or installing obvious grey infrastructure..
- ▬ Implementation of universal access throughout the park, including creative solutions to accommodate significant grading changes, will allow the park to be accessible by all individuals regardless of disability.
- ▬ Stakeholder feedback shaped project design, including the scale of the lawn, safety enhancements and a realigned bikeway, and additional community space.

▬ The site is elevated ten feet or more in some areas compared to the previous site to accommodate the 2050 100-year storm.

Resilience ▬

Ecology ●

Access ▬

0	Site Assessment & Planning	28/28
1	Responsible Siting & Risk Reduction	28/40
2	Community Access & Connections	24/52
3	Edge Resiliency	9/18
4	Natural Resources	36/61
5	Innovation	0/16

TOTAL 125/215

Verification is at +115 points

BATTERY PARK CITY AUTHORITY & AECOM

BATTERY PARK CITY AUTHORITY & AECOM