



Battery Park City Resilience

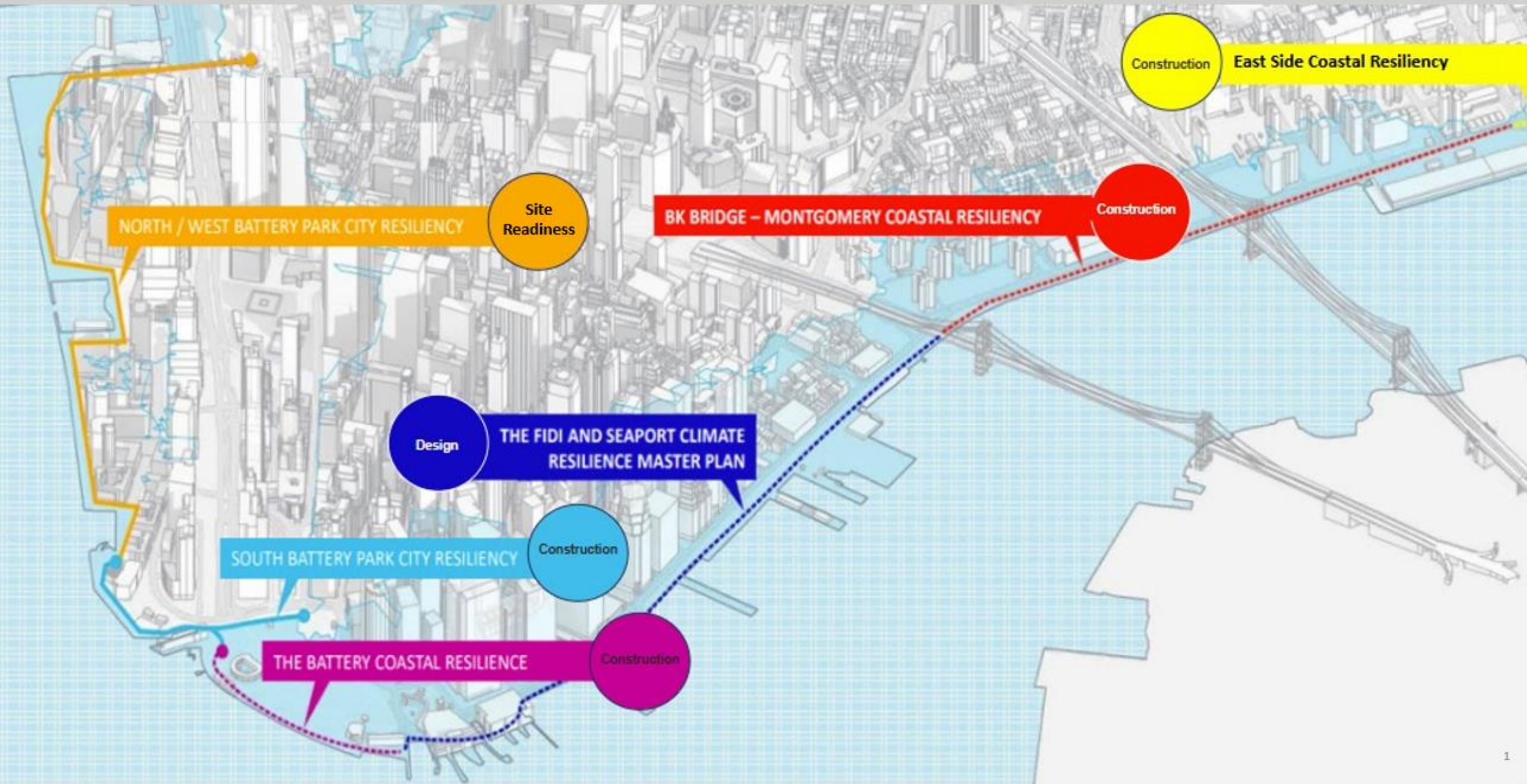
North/West BPC Resiliency Project South BPC Resiliency Project

Manhattan CB1 BPC Committee
November 6, 2025



Battery Park
City Authority

Why We Are Here: Lower Manhattan Coastal Resiliency (LMCR)





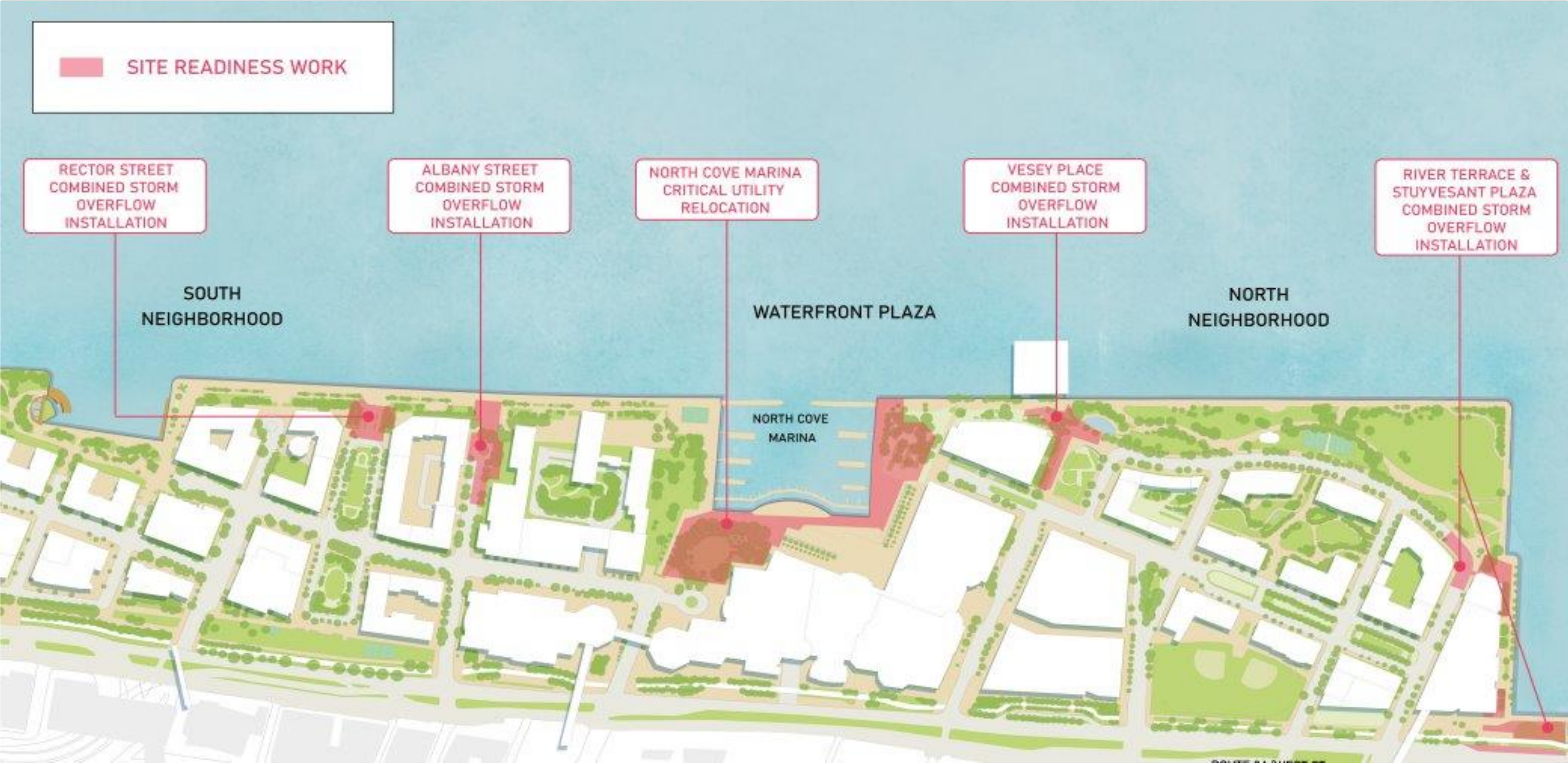
**Battery Park
City Authority**



Battery Park City Resilience – NWBPCR Project

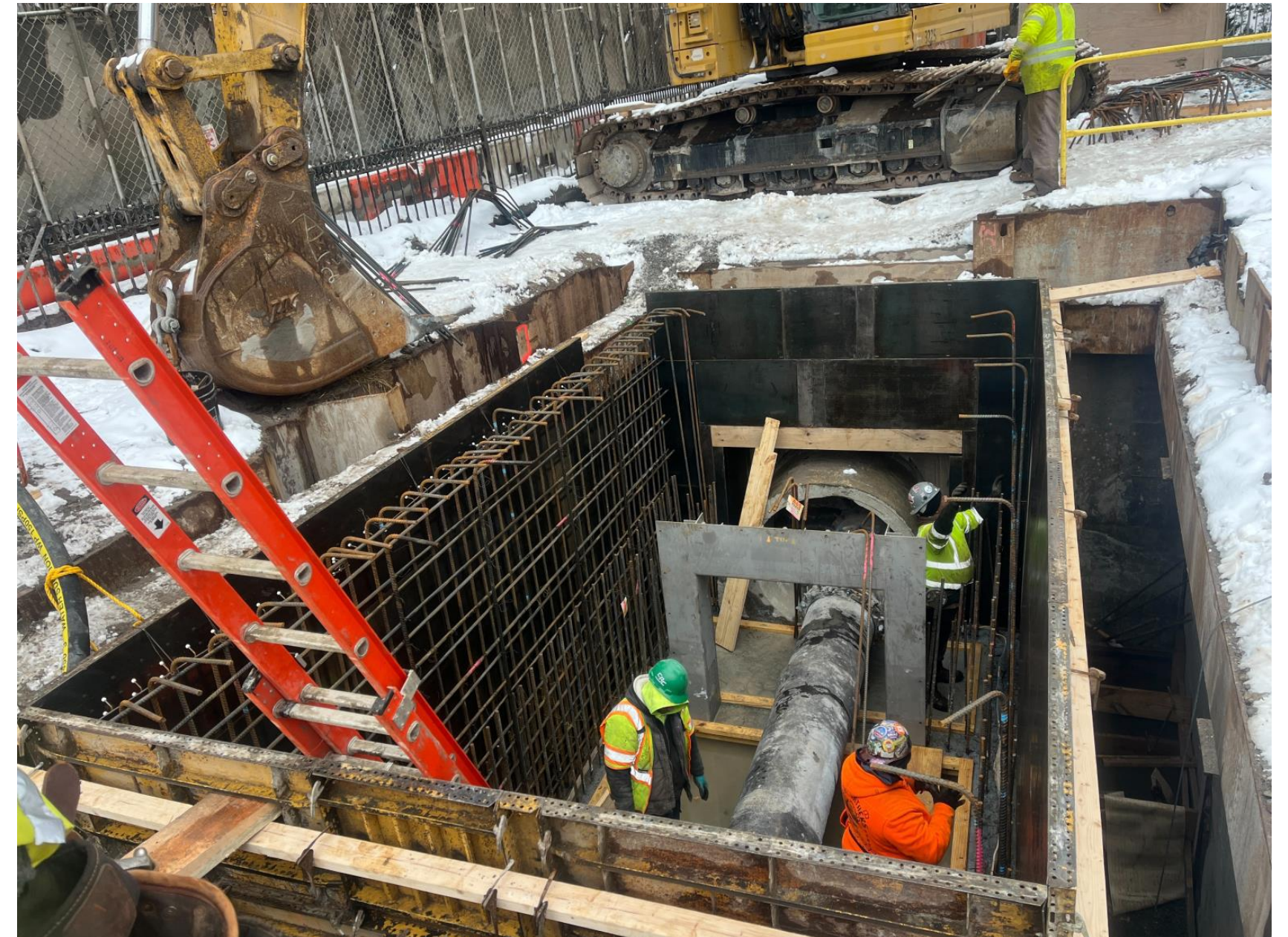


Site Readiness Work



Battery Park City Resiliency: Site Readiness Work

- Over the coming weeks, and running through spring 2026, **site readiness work** is scheduled to proceed for the Battery Park City Resiliency Project.
- What is “Site Readiness work?”
 - Site readiness work is the **initial activity to proactively prepare a project site** prior to the main construction.
 - Activities include **utility relocation, underground assessments, installation of subsurface tide gate infrastructure.**



Battery Park City Resiliency: What You're Seeing

- Site Readiness phase underway
- FBS mock-up on Albany Street removed this week to provide pedestrian access during Tide Gate installation
- Scott Burton's Waterfront Plaza artwork being temporarily removed & stored; to be relocated elsewhere within BPC upon project completion.
- Construction Advisory Committee with electeds to convene week of 11/17 (tentative)



Albany Street FBS site



Scott Burton artwork removal

Battery Park City Resiliency: Independent Air/Noise Monitor

- BPCR Independent Air/Noise Quality Monitor:

Excel Environmental Resources, Inc.

Lawra Dodge, LSRP

Eric Mertz, LSRP

- Excel/Lawra Dodge came highly recommended by CB1, has experience in this community
- BPCA finalizing scope of services and engagement timeline



Community Outreach: Upcoming

thru Spring 2026

On the Ground


- Enhanced mobile outreach in high foot traffic areas
- Construction notifications in BPC Kiosks
- BPC Resiliency “Drop-Ins”
- Virtual site walks
- Materials at BCPA programming

Stakeholder Engagement

- Establishing a Construction Advisory Committee
- PTA/school engagement
- Brookfield Place coordination


Residents

- Flyers have been posted or dropped off in each residential building and ground floor retail
- Mailing to all residents hit last week
- Informational Community Meetings (virtual + In person)




We're Getting Ready for What's Next

Starting in early November, crews will begin **site readiness work** for the **Battery Park City Resiliency** project. This early work will set the stage for the **construction work** to come in **Spring 2026**.



Scan the QR code to learn more and to sign up for construction updates.
If you have any questions, **get in touch** with our **Community Construction Liaison**:

→ **Michael Ryan**
→ **1 (917) 436-6739**
→ **nwbpcrinfo@bpca.ny.gov**



Want to stay in the loop? Follow us on Instagram @bpcparks, and visit www.bpcresiliency.info

Community Outreach: Upcoming

thru Spring 2026

NEW: BPC Resiliency “Drop-Ins”

To ensure we’re hearing from you about the impacts of this work, we’ll be offering weekly drop-in sessions where the feedback is welcome. We hope to see you there.

Fridays

Nov. 14-Dec. 19 & Feb. 6-Mar. 27
10-11AM, 200 Rector Place

Tuesdays

Nov. 18-Dec. 16 & Feb. 3-Mar. 24
12-1PM, 6 River Terrace



BPC Resiliency Drop-ins

FRIDAYS

NOV14-DEC19 & FEB06-MAR27
10-11AM, 200 RECTOR PLACE

TUESDAYS

NOV18-DEC16 & FEB03-MAR24
12-1PM, 6 RIVER TERRACE

Stop by to meet your Community Construction Liaison and members of the Battery Park City Resiliency project team, have a snack, and give us your thoughts on the work underway. Light refreshments provided.

Staying Connected

- **NWBPCR Project Community Construction Liaison (CCL) is available to answer questions or concerns, as well as direct questions to the project team for more detailed follow up:**

Name: Michael Ryan

Email: nwbpcrinfo@bpca.ny.gov

Phone: (917) 436-6739

- **We encourage community members to [sign up for our newsletter](#) so you can receive direct updates on all things related to the BPCR Project.**
- **We are also regularly updating the BPCR website (bpcresiliency.info) with relevant information on construction activity. Additionally, our CCL is available to answer questions and concerns as they arise.**



Battery Park
City Authority



Battery Park City Resilience – SBPCR Project





Progress

Wagner Park/MJH Sitework: 95% Complete

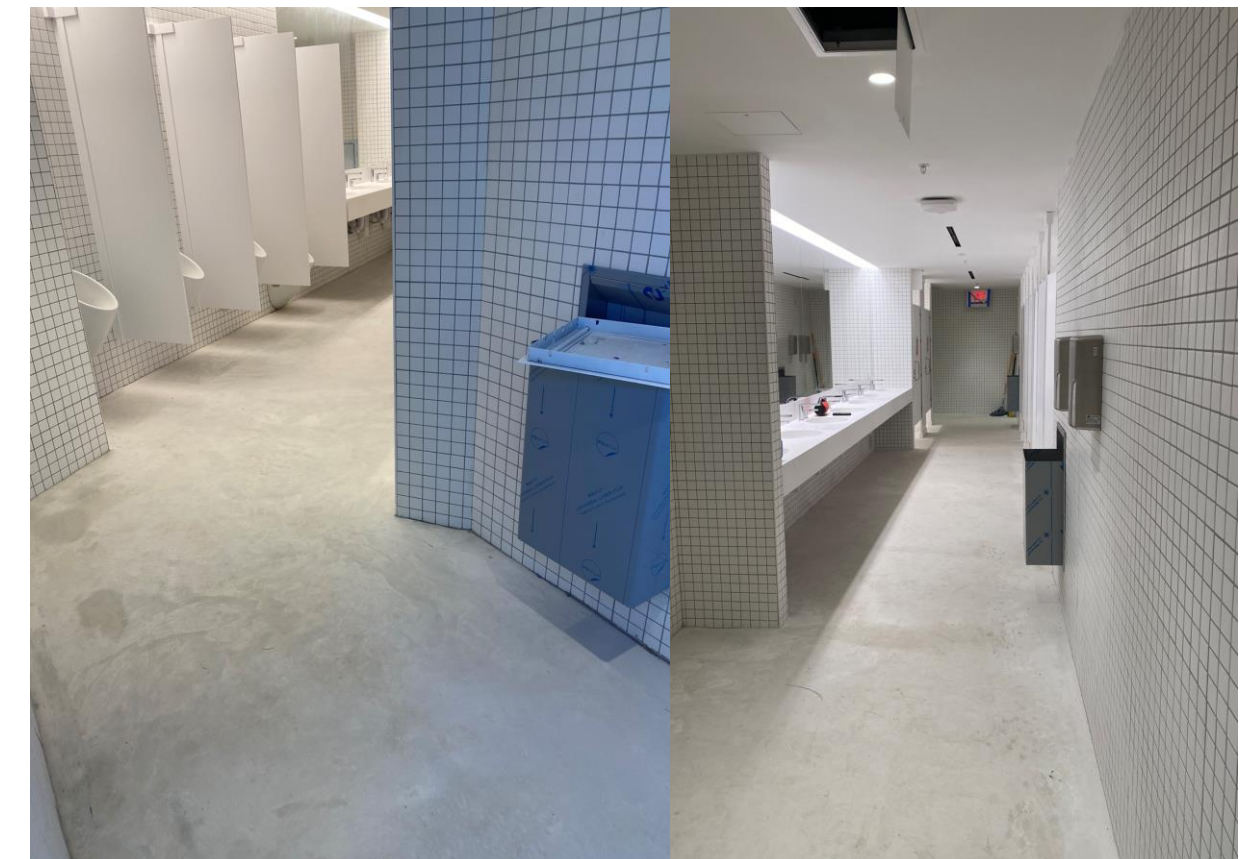
- Wagner Park Opened – July 29, 2025
- South Allee
- MJH Oval Benches

Wagner Park Pavilion: 90% Complete

- Restrooms/Rooftop Ribbon Cutting – October 29, 2025
- Classroom
- Restaurant Space

Pier A/The Battery: 60% Complete

- Pier A Inlet
- Pier A Plaza Tide Gate
- Flood Wall Construction



BATTERY PARK CITY AUTHORITY



Schedule

South Allee (Late November)

Pavilion Restaurant (Late November)

- Ceiling Baffles & Light Fixtures

Pavilion Classroom (Late December / Early 2026)

- Ceiling Baffles, Light Fixtures, & A/V Equipment

Package 4 Completion (May 2026)

- Pier A Inlet Viewing Platform (November 2025)



Coming Soon



BATTERY PARK CITY AUTHORITY

Coming Soon



BATTERY PARK CITY AUTHORITY

Coming Soon



BATTERY PARK CITY AUTHORITY

Coming Soon



BATTERY PARK CITY AUTHORITY



Thank You!

Questions?



**Battery Park
City Authority**

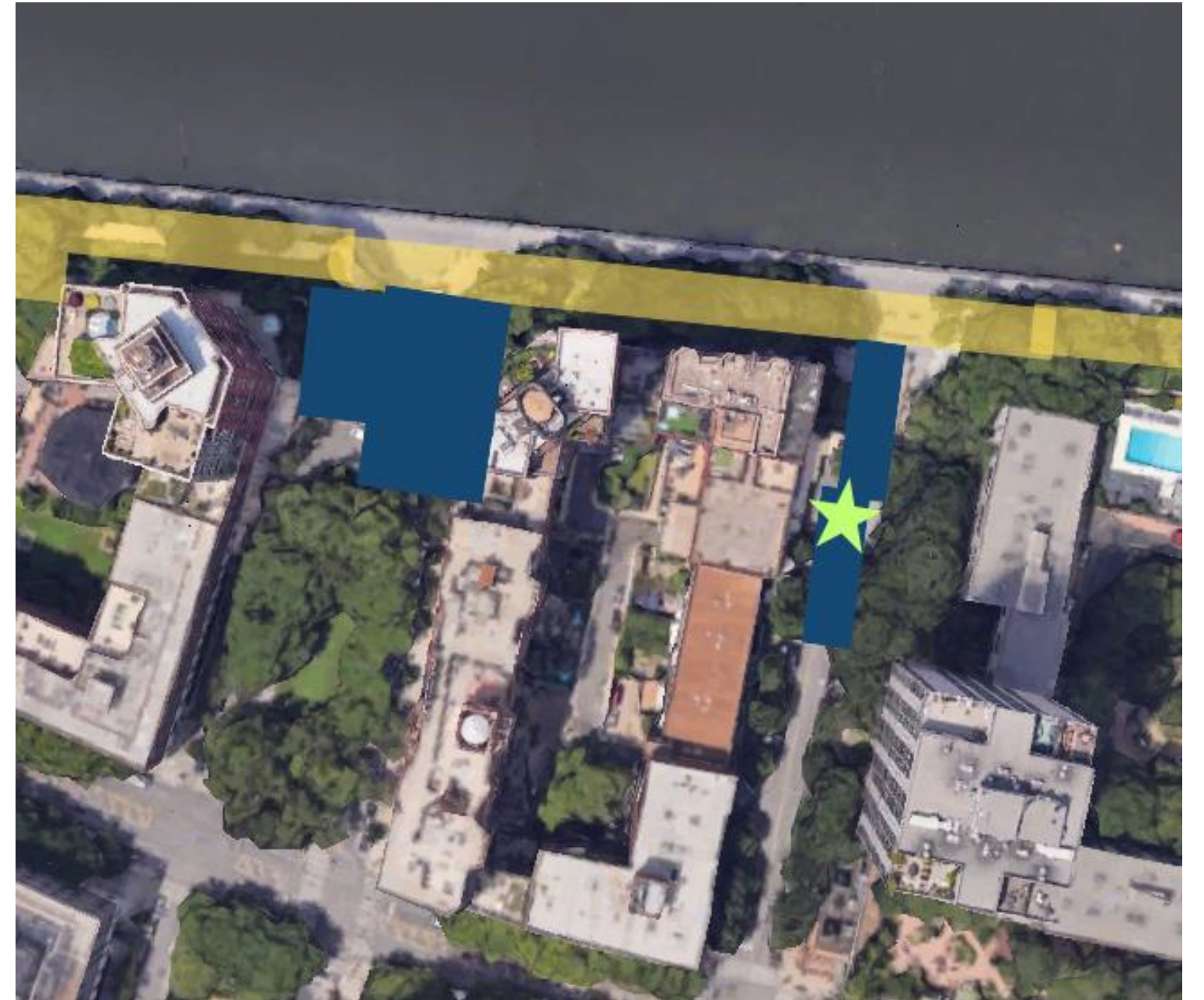
Appendix (NWBPCR)

Site Readiness Work: Albany Street – Tide Gate Installation

(November 2025 – April 2026, estimated)

WHAT YOU'LL SEE:

- Pedestrian access to BPC Esplanade at Albany Street maintained
- Deaccessioning of *Upper Room*
- Traffic flow from the Upper Esplanade rerouted to the Lower esplanade
- Access to Hudson Tower (350 Albany) and internal drive lane between Hudson Tower and Hudson View West (aka “Ring Road”) is maintained

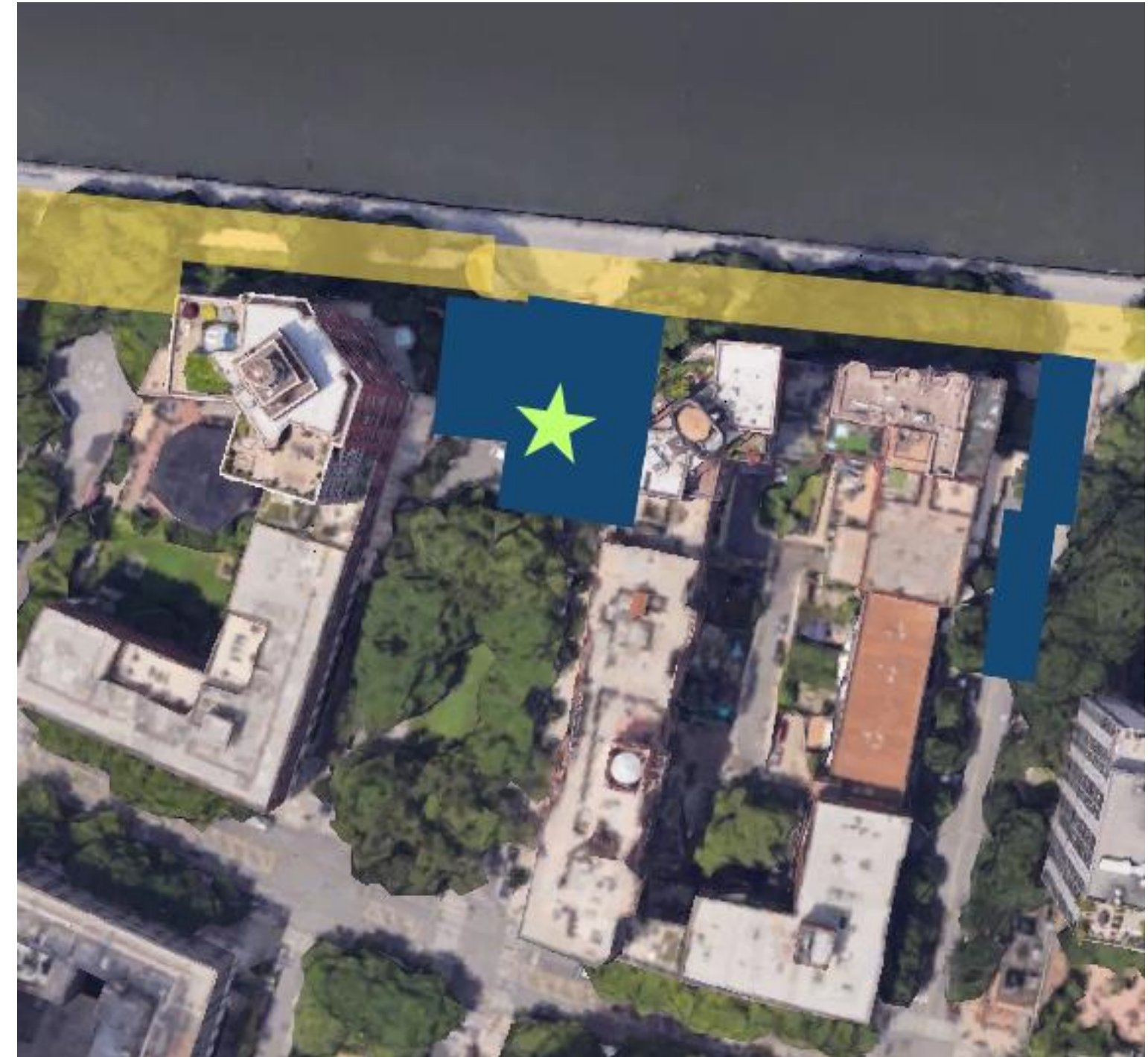


Site Readiness Work: Rector Place – Tide Gate Installation

(March – August 2026, estimated)

WHAT YOU'LL SEE:

- Pedestrian access to BPC Esplanade at Rector Place maintained.
- *Rector Gate* to be protected in place.
- Some bench seating will be removed.
- Access and egress to Liberty House and Liberty Terrace (377 & 380 Rector Place, respectively) will be maintained.

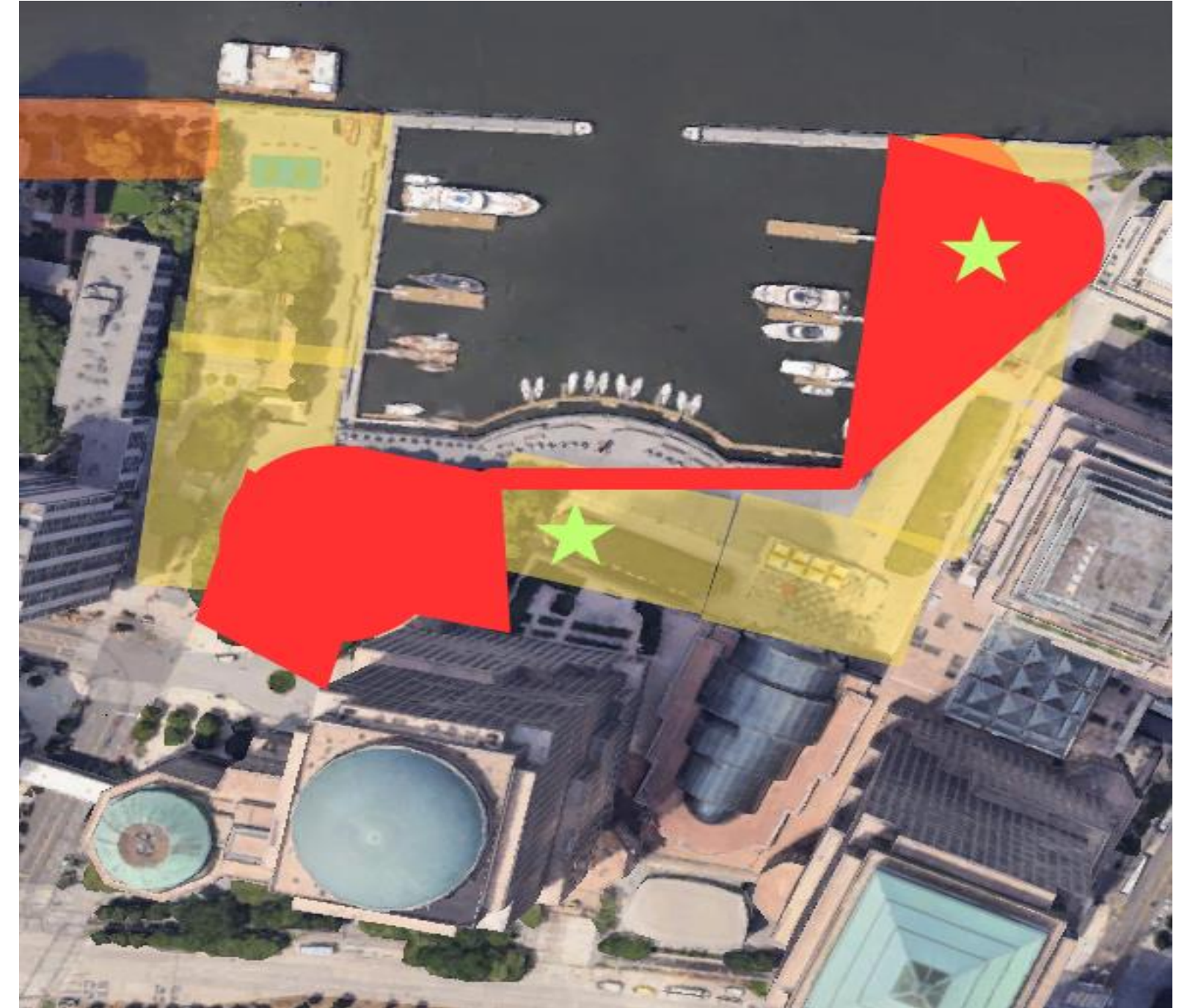


Site Readiness Work: North Cove Marina – Critical Utility Relocation

(November 2025 – April 2026, estimated)

WHAT YOU'LL SEE:

- Pumphouse Park, Belvedere Plaza, and part of the Lower Esplanade along Waterfront Plaza will be closed
- Marina access on the north and east sides will be impacted (*lower quay to remain open during utility relocation*)
 - Marina closed as of conclusion of sailing season (October 31, 2025)
- Winter Garden will be unaffected; Ice Skating Rink will open mid-November
- North and southbound outdoor pedestrian egress maintained alongside Brookfield Place



Site Readiness Work: Brookfield Battery Park City Ferry Terminal

(April-October 2026)

WHAT YOU'LL SEE:

Vesey Place


- Access to ferry terminal and Irish Hunger Memorial to be maintained via south and north sidewalks along Vesey Place and north side of Lily Pond.
- Vesey Place seating will be unavailable
- Vesey Place planting beds will remain closed and fenced in during this work
- Western half of IHM plaza will be closed



Signage – Temporary Wayfinding/Detour Signage

- Site Readiness Work will be undertaken to prepare sites, reduce risk, and accelerate timelines before the main closures of the Battery Park City Resiliency Project begin
- The project team has developed temporary signs to reroute pedestrians during this work, and share Resiliency Project information
- Wayfinding signage will go up mid-November. Interim signage to go up this week as work begins.

IMPORTANT CONSTRUCTION NOTICE




**EARLY
NOVEMBER**

The Battery Park City Resiliency (BPCR) Project is creating a more resilient neighborhood. This will be accomplished with implementation of a coastal flood barrier system, designed to protect Battery Park City and parts of lower Manhattan. As we enter the next phase of the project, you'll see site readiness work across the neighborhood. **This will help prepare for broader construction, scheduled to start in Spring 2026.**

What to expect? In this location you'll see:

- **Pedestrian access** to BPC Esplanade at **Albany Street** will be maintained.
- **Upper Room** will be deaccessioned (removed).
- **Traffic flow** from the Upper Esplanade will be rerouted to the Lower Esplanade.
- **Access to Hudson Tower** (350 Albany) and internal drive lane between Hudson Tower and **Hudson View West** (aka "Ring Road") will be maintained.

Working hours during this phase of the BPCR Project are 7 AM to 6 PM, Monday through Friday.



**ALBANY STREET
COMBINED STORM
OVERFLOW
INSTALLATION**

**SOUTH
NEIGHBORHOOD**





Image shows final conditions after the Project is complete.



If you have any questions, please contact our community construction liaison or head to our website for more information.

→ Michael Ryan
→ (917) 436-6739
→ bpcinfo@bpca.ny.gov



Want to stay in the loop? Follow us on Instagram @bpcparks, and visit www.bpcresiliency.info




Sign Type A.1

What's Going on?

We're building a coastal flood protection system to safeguard Battery Park City from future storms and rising sea levels, ensuring the community stays safe and resilient for years to come.






DETOUR

Sign Type A.2

What's Going on?

We're building a coastal flood protection system to safeguard Battery Park City from future storms and rising sea levels, ensuring the community stays safe and resilient for years to come.





DETOUR

Sign Type A.3

What's Going on?

We're building a coastal flood protection system to safeguard Battery Park City from future storms and rising sea levels, ensuring the community stays safe and resilient for years to come.





PATHWAY OPEN, USE CAUTION

Sign Type A.4

What's Going on?

We're building a coastal flood protection system to safeguard Battery Park City from future storms and rising sea levels, ensuring the community stays safe and resilient for years to come.

PATHWAY CLOSED

Cross River Terrace
for Access to
Chambers Street

Site Readiness Work: Construction Effects

- **Working hours** will be limited to weekdays between the hours of 7AM and 6PM.
 - (On limited occasions when weekend or after-hour work would be necessary permits would be required, community will be notified in advance.)
- Depending on the site, **neighborhood parking** may or may not be impacted by limits of work.
 - Albany Street will have 11 spots impacted, 7 on south side and 4 on the north side
 - Rector Place will have two (2) on the north side
- Crews required to park personal vehicles in parking garages or otherwise outside of the work area
- Construction equipment/vehicles located in staging areas throughout the Project site.
- Pedestrian **access to BPC Esplanade maintained** at both Albany Street & Rector Place.

Site Readiness Work: Construction Effects *(cont.)*

- **Efforts to minimize construction related noise** will be implemented:
 - Utilization of “pile drilling” as opposed to “pile driving,” which will lower noise and vibration levels during working hours
 - Most noise-intensive equipment (such as vacuums, jackhammers, etc.) to only be used when necessary
 - Utilization of noise barriers with sound-absorbing blankets
- An **independent air monitor** will be employed:
 - Air monitoring equipment to be installed around the site
 - Real-time alerts will help us respond quickly if air quality limits are exceeded.
 - Community air monitoring reports to be published regularly, in consultation with the community.
- **Dust suppression strategies** will also be used, such as:
 - Spraying water on exposed soil and open areas
 - Covering exposed soil with secured tarps
 - Extra precautions during dry or windy conditions

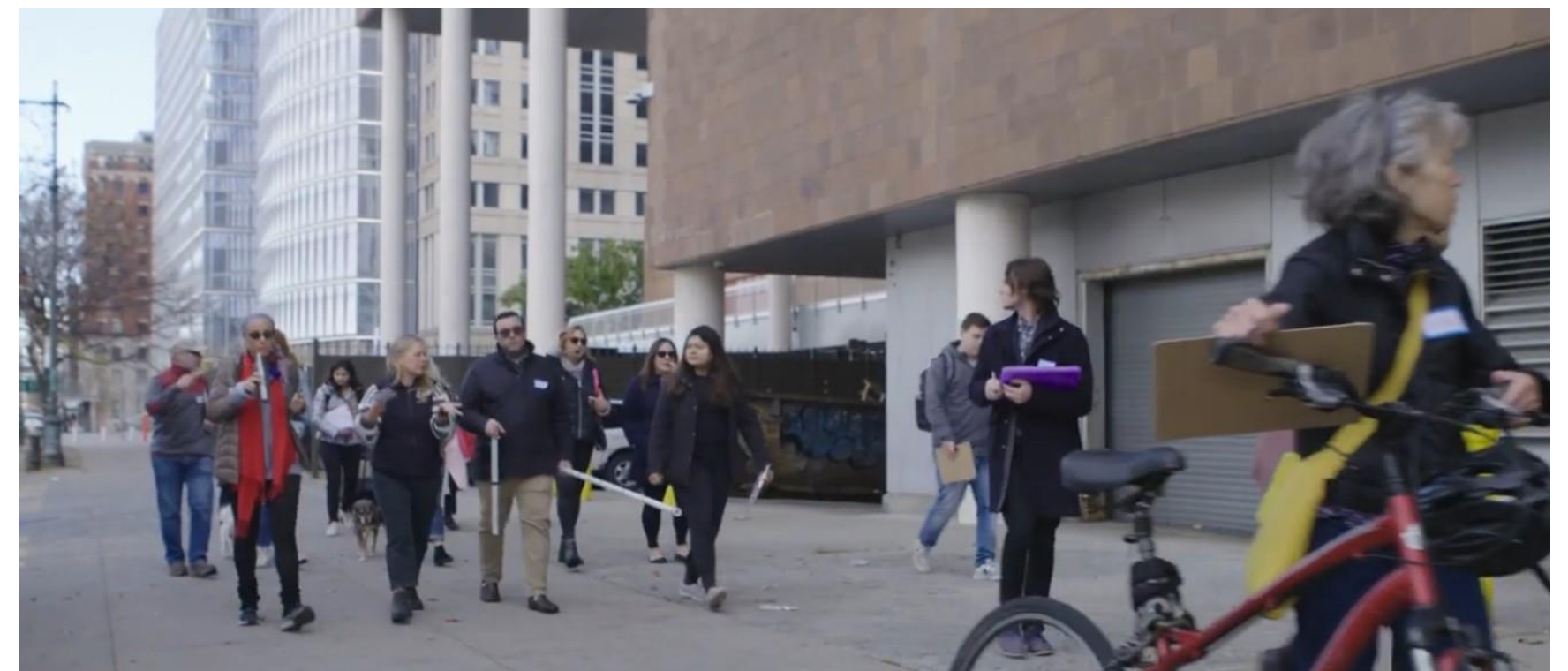
Site Readiness Work: Construction Effects *(cont.)*

- Site Readiness Trees & Green Space Impacts
 - **Pumphouse Park** will be closed during Site Readiness work
 - **No change to the tree impacts already described in the FEIS**
 - Project-wide, approximately 435 trees to be removed and 450 trees to be replanted



Community Outreach to Date: What We've Heard, What We're Doing

- Maintain wide open views out to the water
- Keep Pumphouse Park feeling secluded
- Ensure some level of esplanade access throughout construction
- Keep views to Hudson River Park from 9A
- Keep South Cove as is
- Keep the ferry terminal where it is
- Preserve as much public art as possible
- Less hardscape, more plantings
- More seating options, including preservation or replacement of World's Fair benches



Esplanade Plaza: Existing

Esplanade Plaza | Volleyball Court

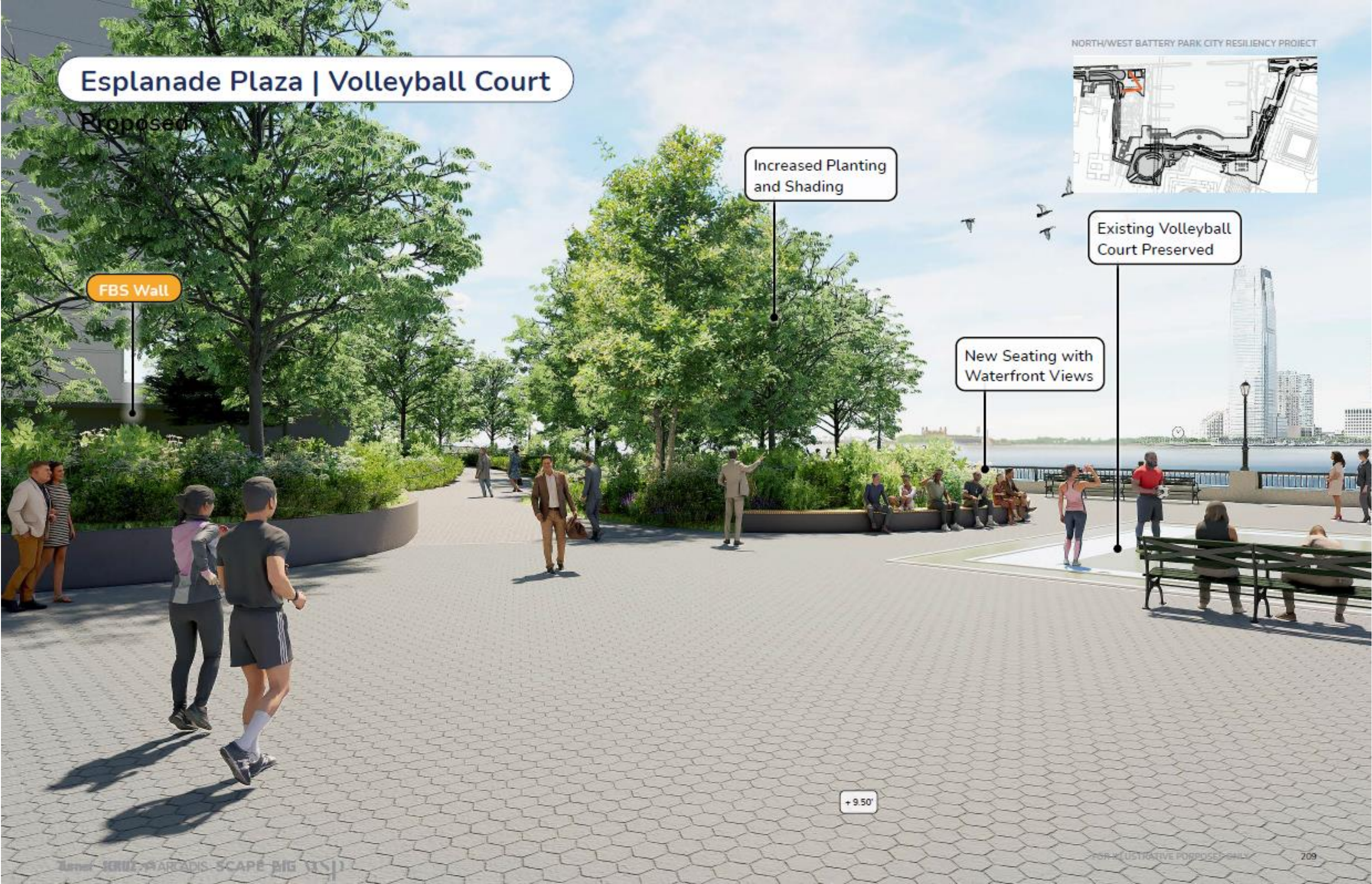
Existing

NORTH/WEST BATTERY PARK CITY RESILIENCY PROJECT

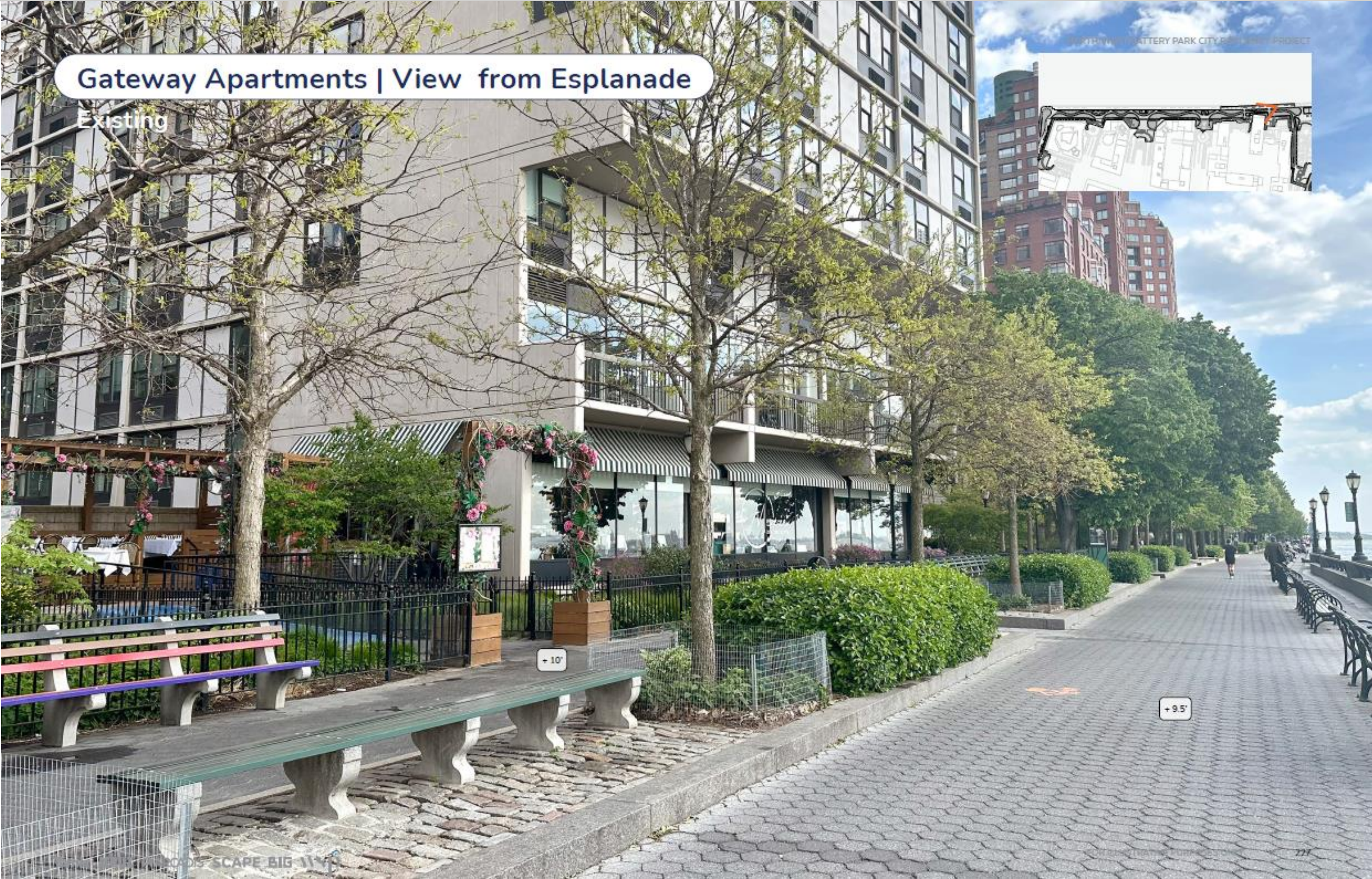


+ 9.50'

Esplanade Plaza: Proposed



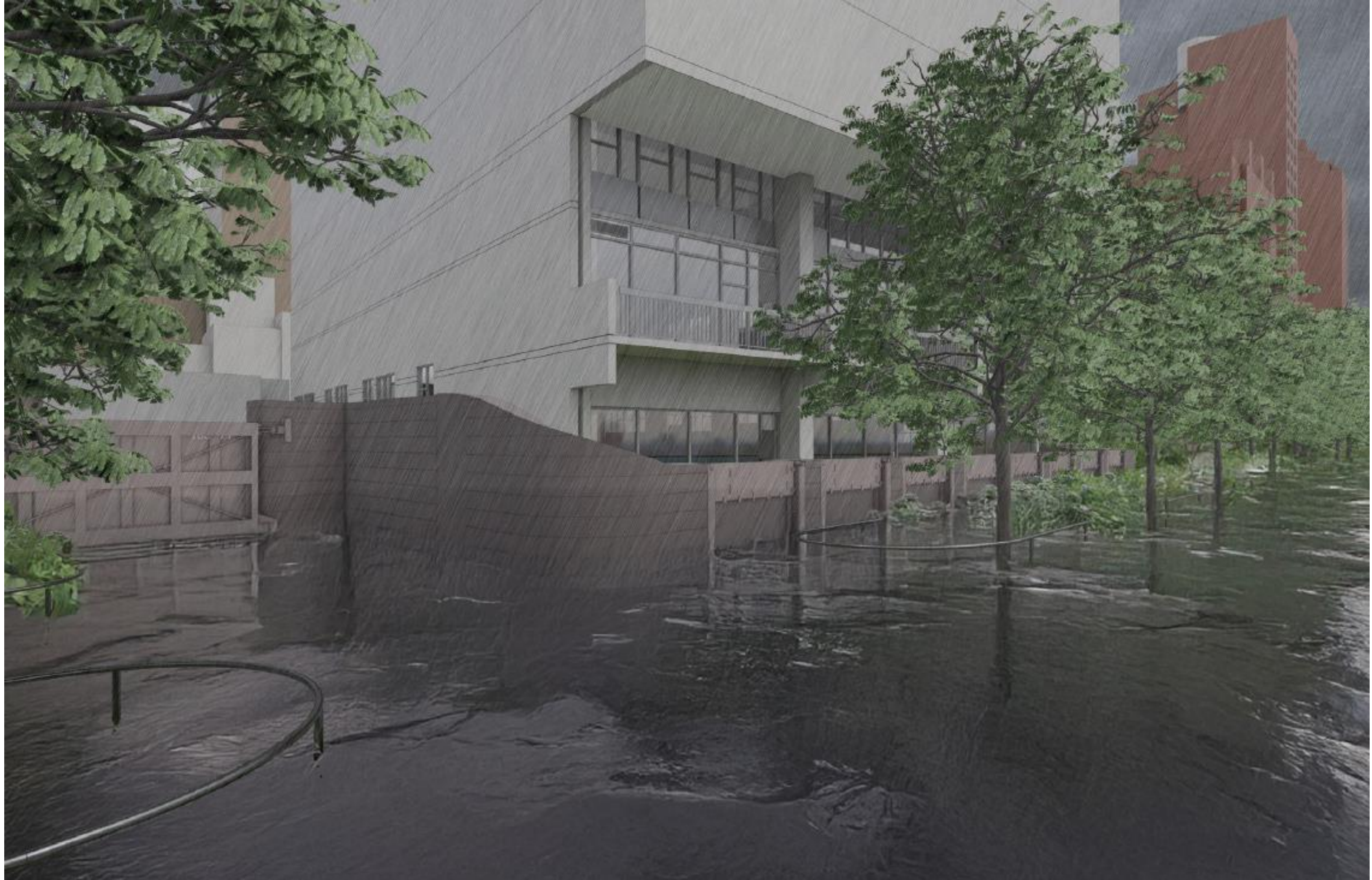
View of Gateway Plaza: Existing



View of Gateway Plaza: Proposed



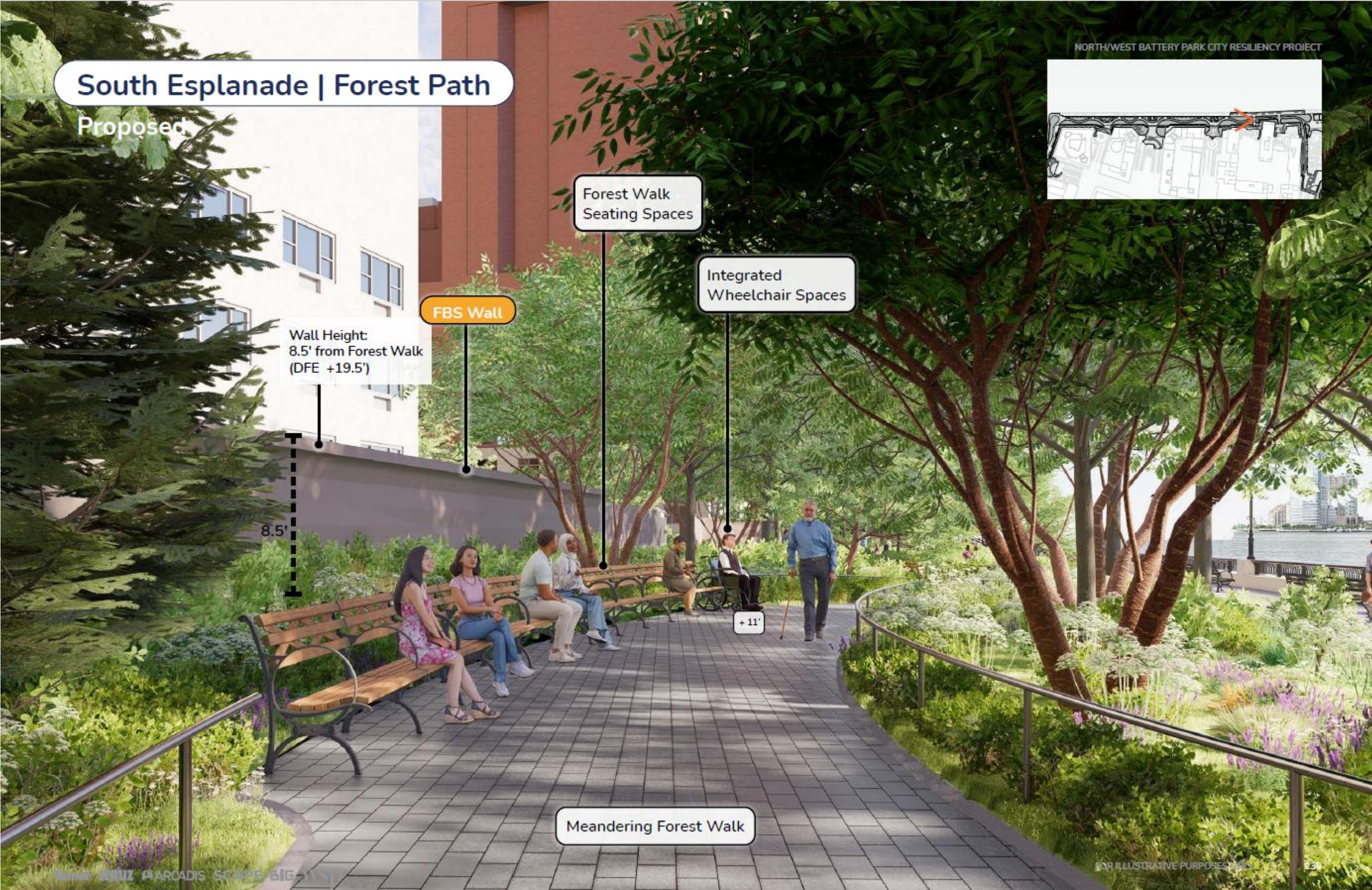
View of Gateway Plaza: Proposed Flood Condition



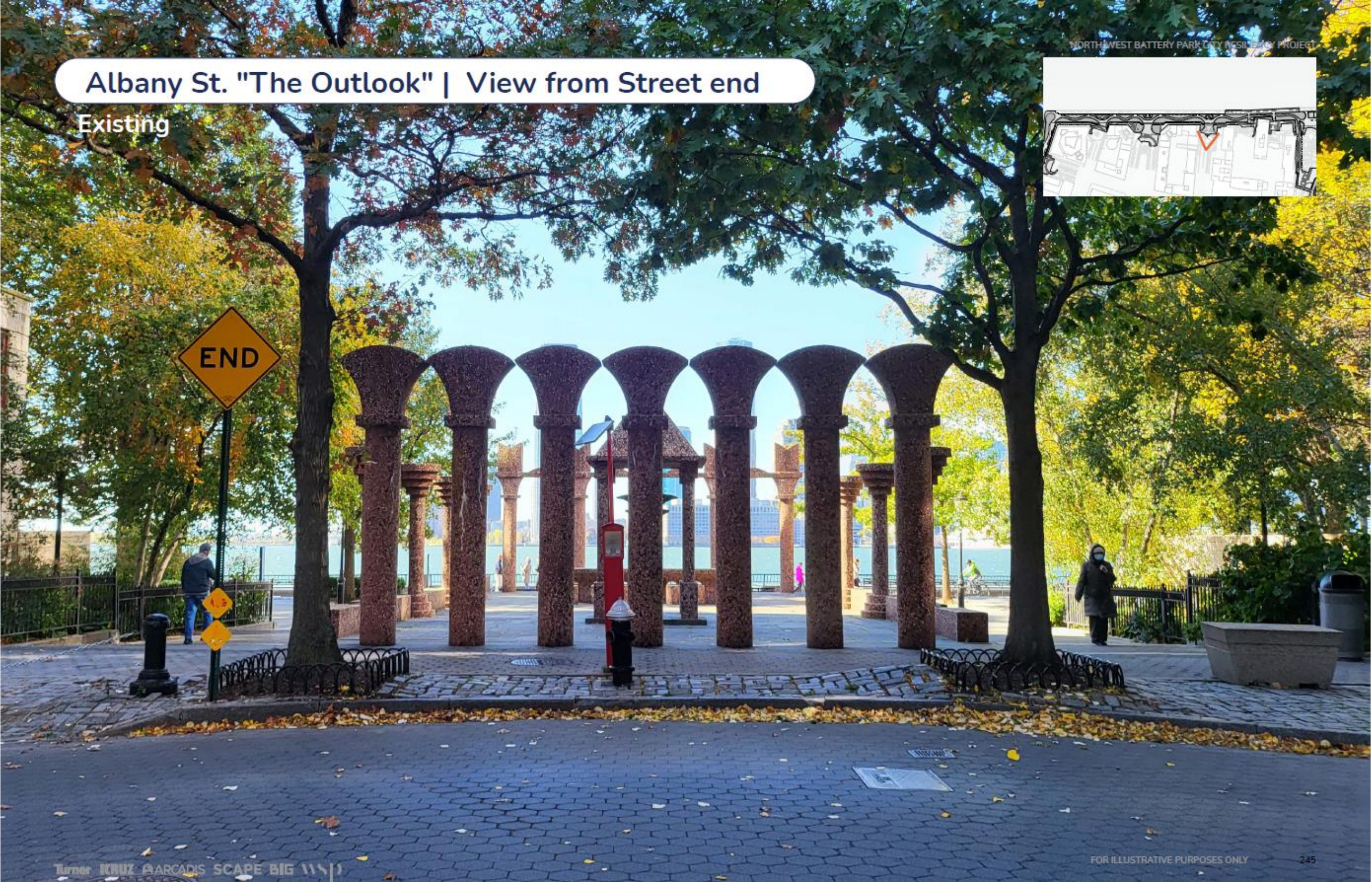
Looking South Along Esplanade: Existing



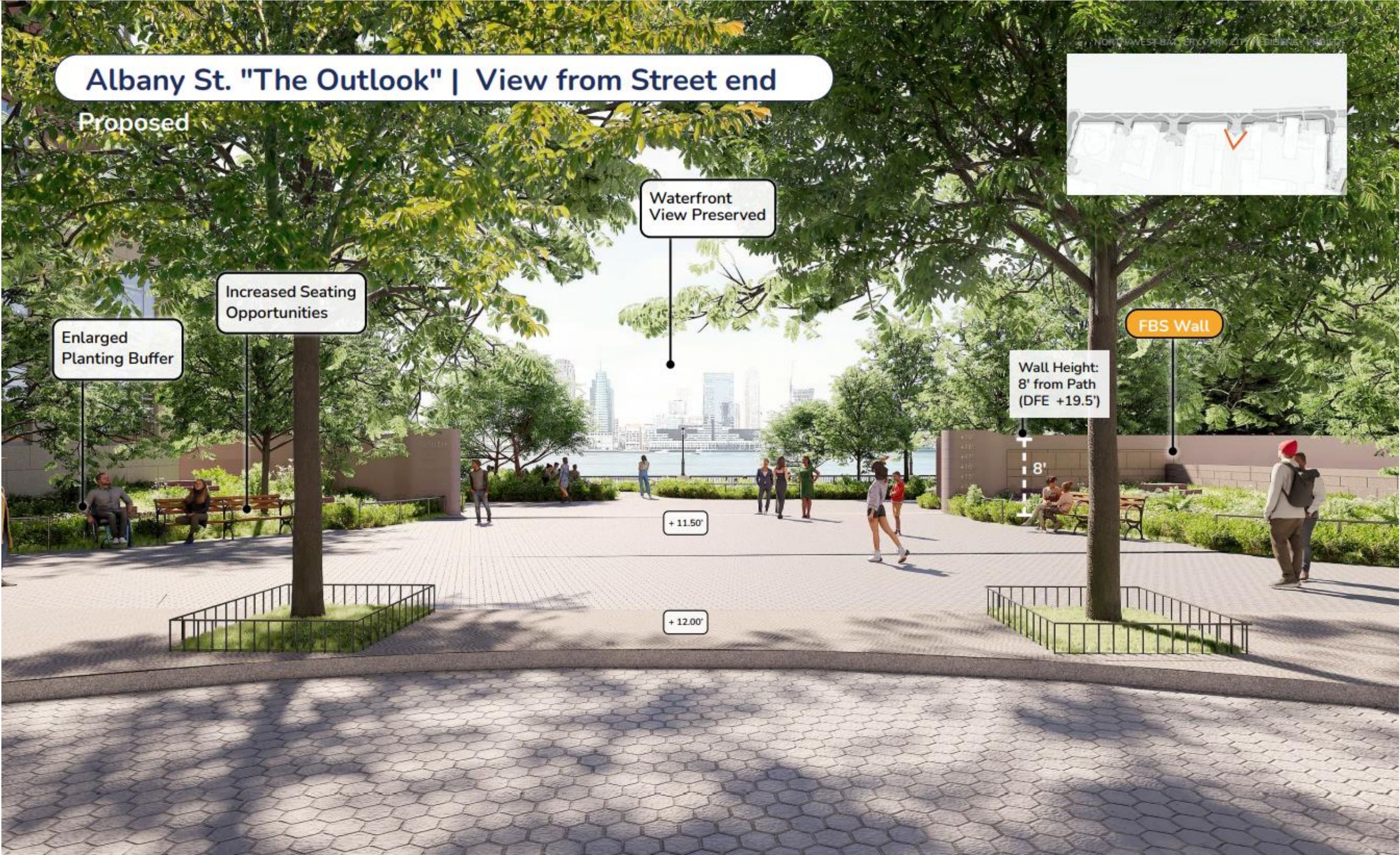
Looking South Along Esplanade: Proposed



Albany Street End: Existing



Albany Street End: Proposed



Albany Street End

Albany St. "The Outlook" | View toward Waterfront

Proposed

NORTH/WEST BATTERY PARK CITY RESILIENCY PROJECT



Room Accessible
From Forest Path

Precast
Concrete Bench

Room Accessible
From Esplanade

+ 11.5'

View of Albany Street End from Esplanade



View of Albany Street End from Esplanade: Proposed Flood Condition



Appendix (SBPCR)



Wagner Park Pavilion Restrooms

BATTERY PARK CITY AUTHORITY

Wagner Park Pavilion Classroom & Restaurant Ceilings



BATTERY PARK CITY AUTHORITY



Wagner Park South Allee

BATTERY PARK CITY AUTHORITY

Wagner Park Lawn Replacement



BATTERY PARK CITY AUTHORITY

First Place Stop Log Deployment



BATTERY PARK CITY AUTHORITY

Pier A Plaza Jet Grouting



BATTERY PARK CITY AUTHORITY



Pier A Inlet

Platform & ECOcrete Structures

BATTERY PARK CITY AUTHORITY



The Battery Flood Wall

BATTERY PARK CITY AUTHORITY