



# North/West Battery Park City Resiliency Project

**CB1**  
**Reaches 2, 3 & 4**

March 18, 2024



1. Reach 2 Updates
2. Reach 3 Updates
3. Reach 4 Updates

# Reach 2 Updates

REACH 2  
a joint venture

1

## Reach 2 | Design Goals

### URBAN DESIGN / ENVIRONMENTAL CONTEXT

#### GOALS:

MAINTAIN UNIVERSAL ACCESSIBILITY

MAXIMIZE NUMBER OF TREES

PROTECT AS MANY TREES AS POSSIBLE AT TRIBECA POINT PLANTER

MAINTAIN ADEQUATE SOIL DEPTHS

MAINTAIN 20' FREE AND CLEAR PATHWAY

ESTABLISH MATERIAL DIFFERENCE FOR SECONDARY PATHWAY AND OCCUPABLE AREAS

SUMMER SEASON -- PROVIDE SHADE COOL SPACES FOR OCCUPATION AND CIRCULATION

WINTER SEASON -- EXPAND WIND BREAKS AND

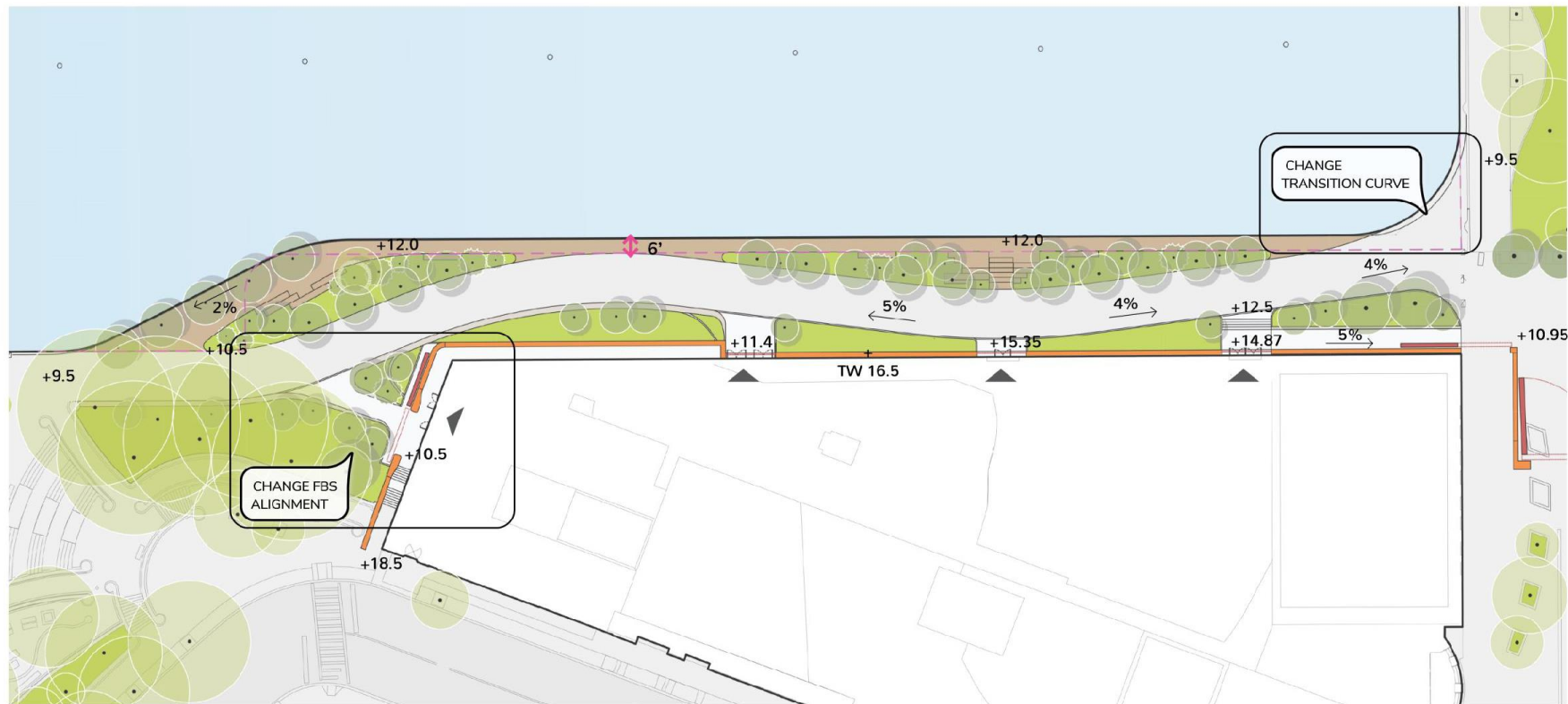
### CITY POINT / STUYVESANT HIGH SCHOOL

#### CONSIDERATIONS:

LIMIT THE NUMBER OF SEATING OPPORTUNITIES IMMEDIATELY ADJACENT TO BUILDING



## Reach 2 | 40% Plan



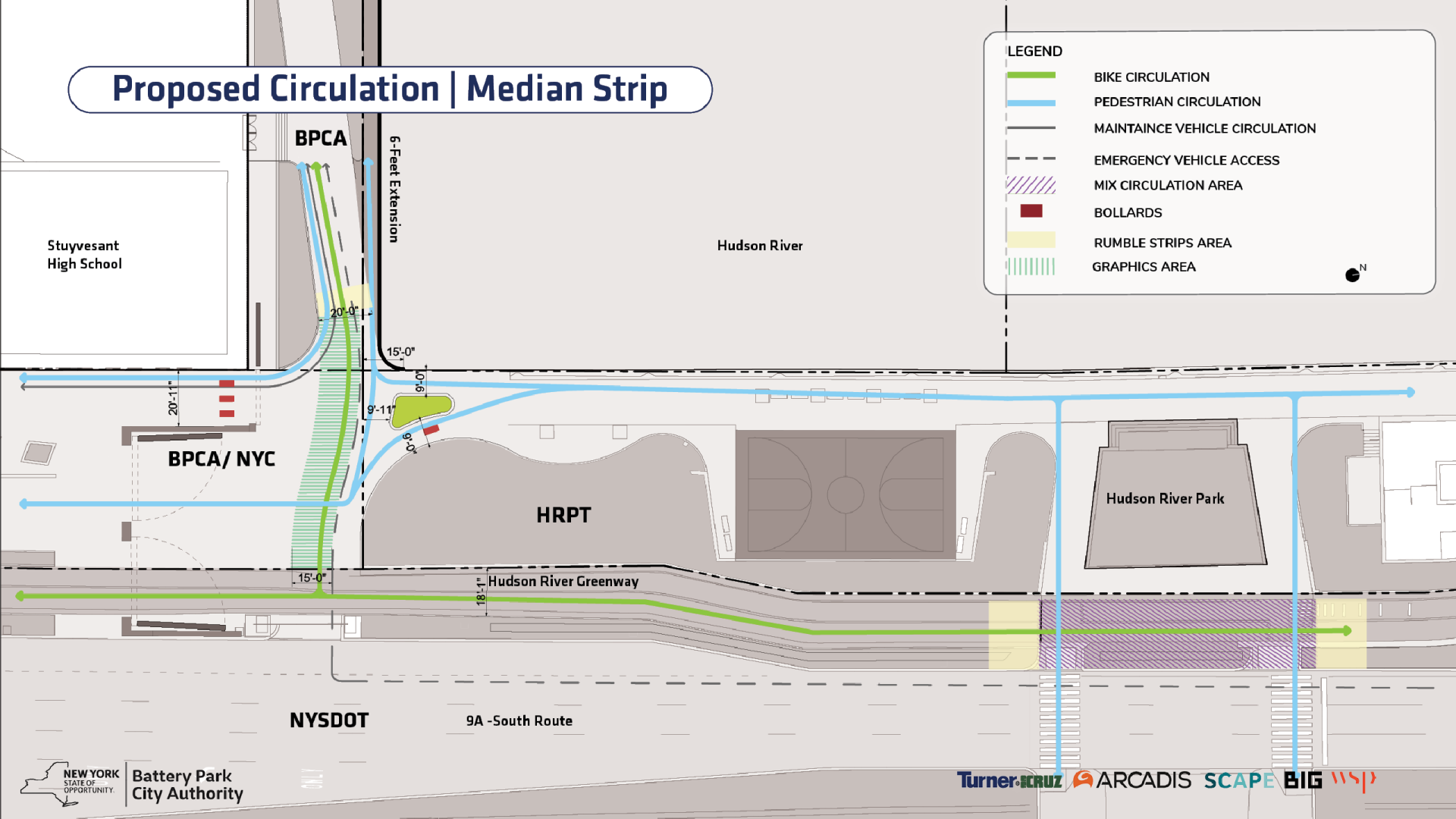
## Reach 2 | 40% Plan



## Reach 2 | Updated Plan

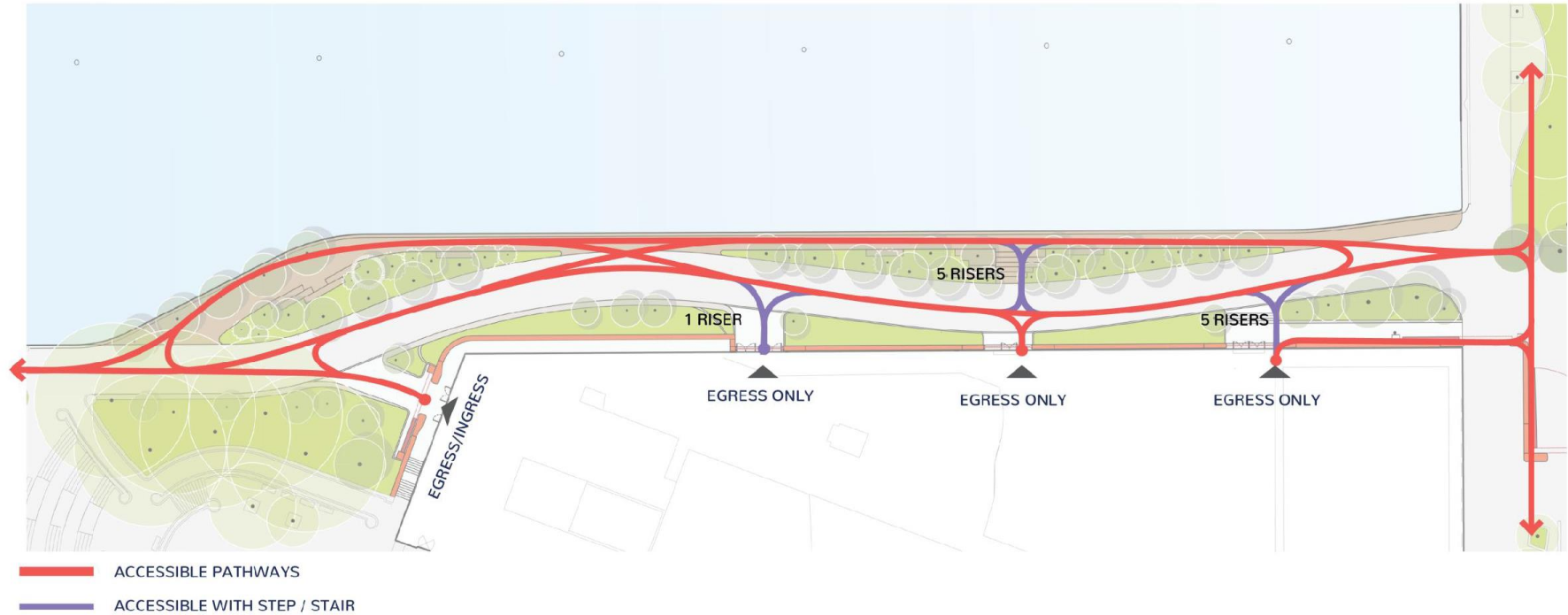


# Proposed Circulation | Median Strip



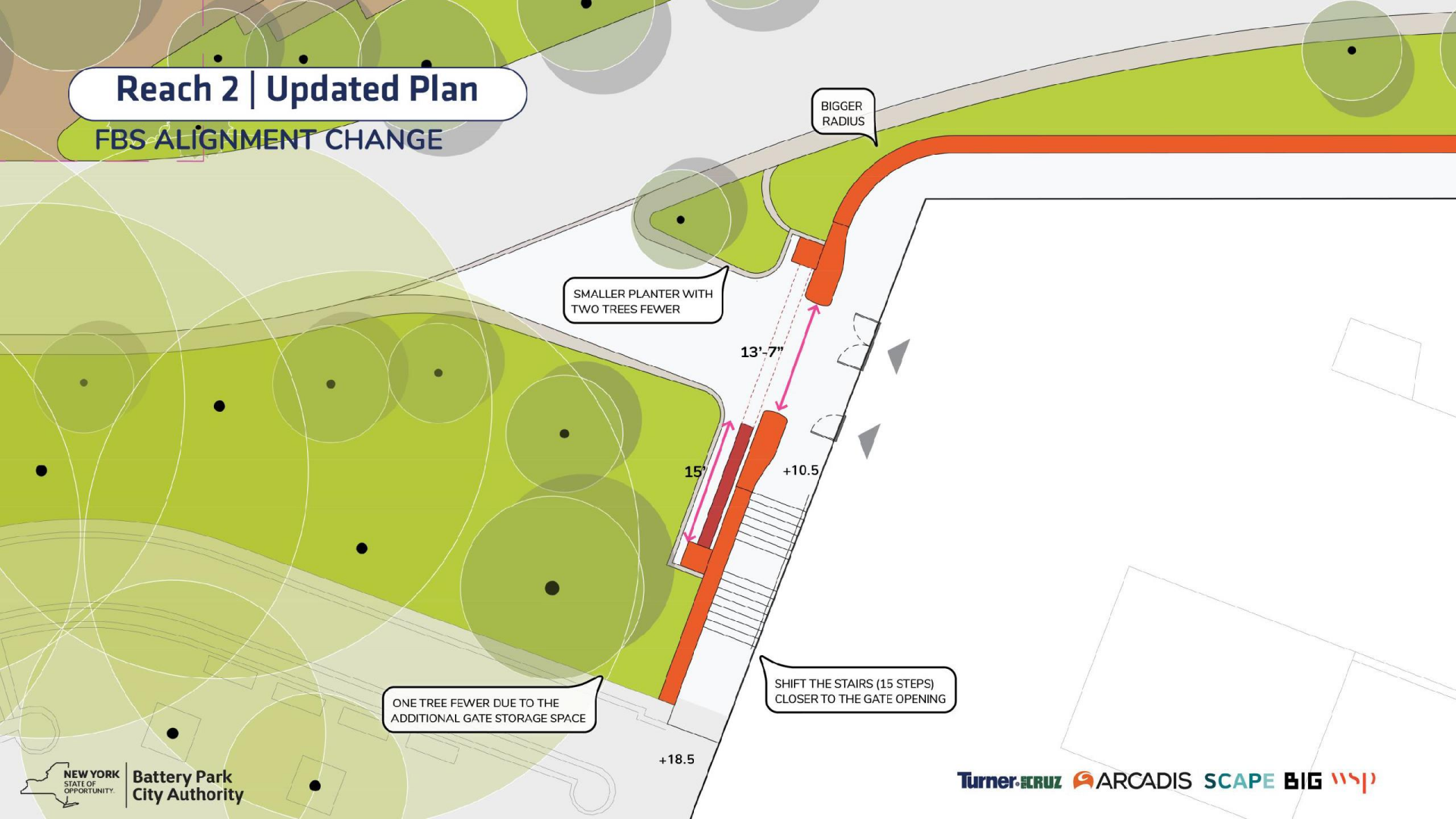


## Reach 2 | CIRCULATION

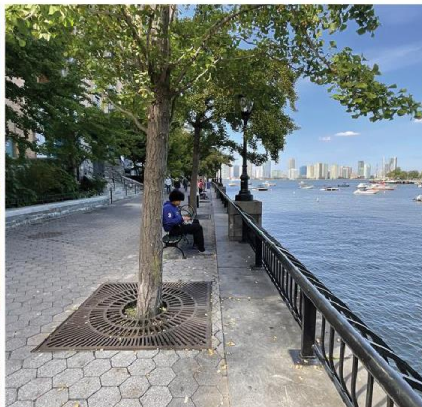


## Reach 2 | Updated Plan

### FBS ALIGNMENT CHANGE



## Existing Palette - North Esplanade



Hex Paver



Brick Facade



BPC Railing



Type B Light Pole



Granite Bollards



Planting Concrete  
Bollards



## New Palette - North Esplanade



 Proposed New Material



Hex Paver



Brick Facade



BPC Railing



Type B Light Pole



Granite Bollards



Planting Concrete Bollards



Precast Concrete Seating



Pink Granite



Lumber with Routed Face



Metal Edge



Precast Concrete Steps



## Reach 2 - Hardscape Layout

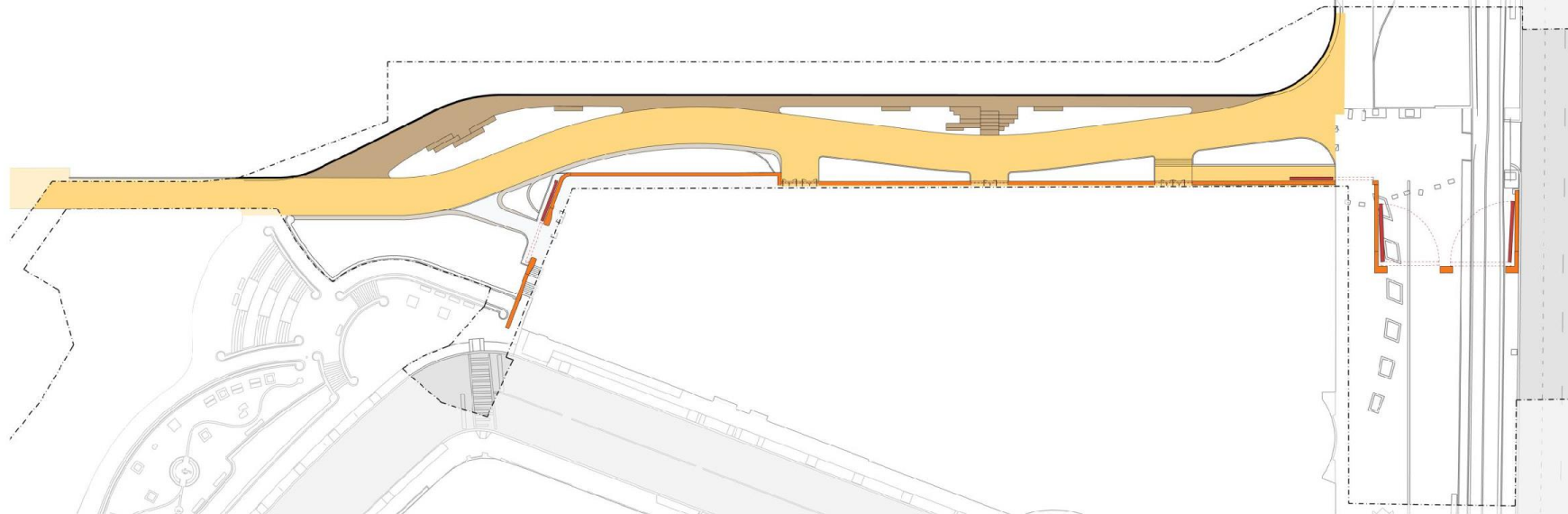
Proposed New Material



Hex Paver



Lumber with Routed Face



## Furniture - Precast



Precast Concrete

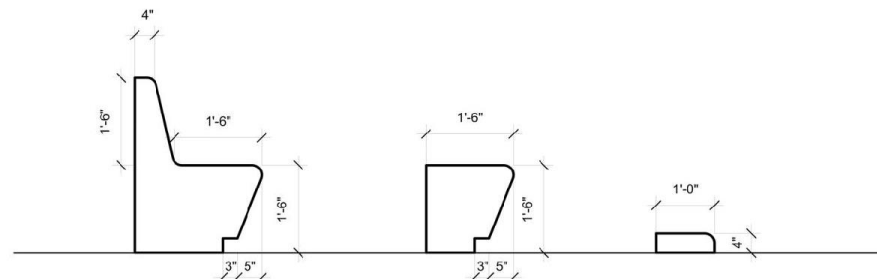
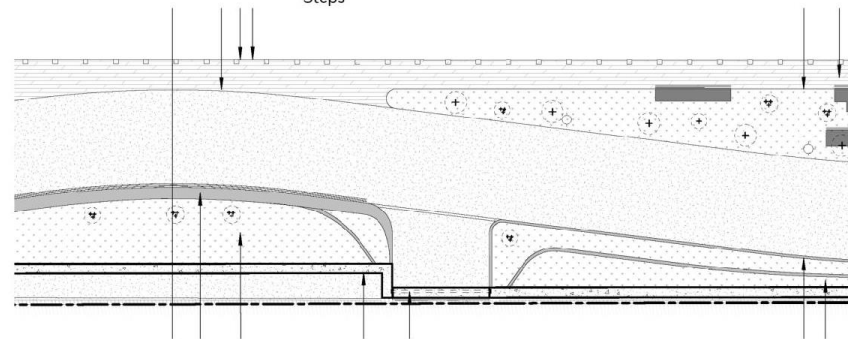


Precast Concrete Steps



Lumber with Routed Face

Proposed New Material

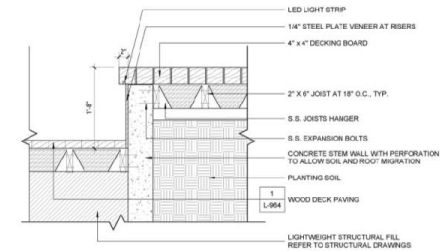
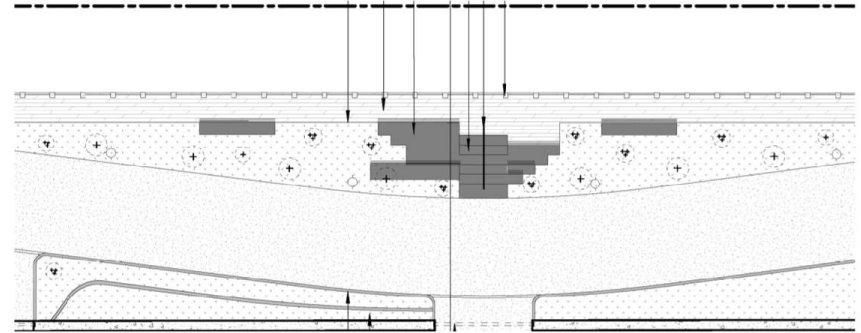




## Furniture - Wood Elements



Lumber with Rounded Face





## Reach 2 | Perspective





## Reach 2 | Perspective





## Reach 2 | Perspective



Reach 3 Updates

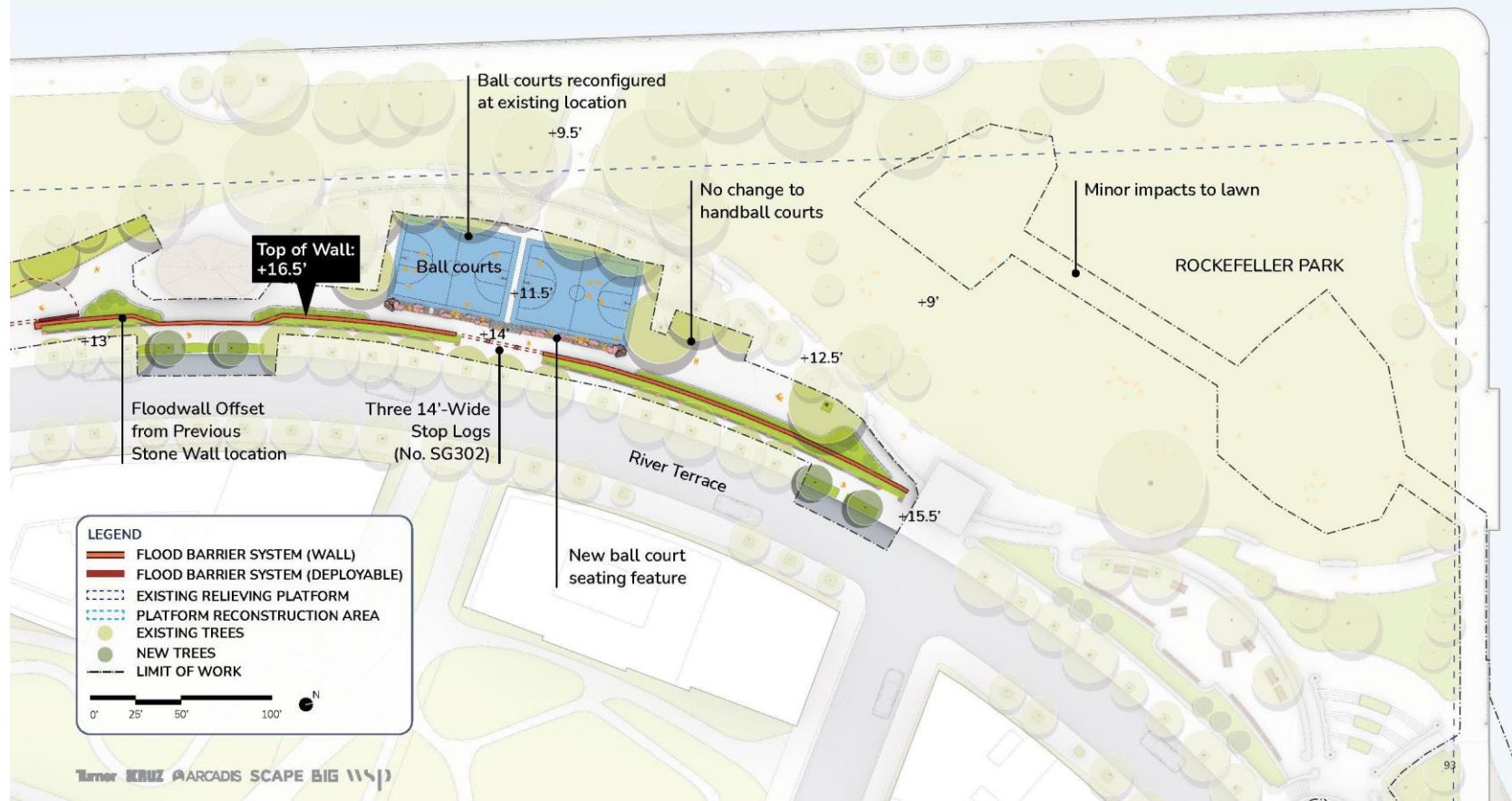
2



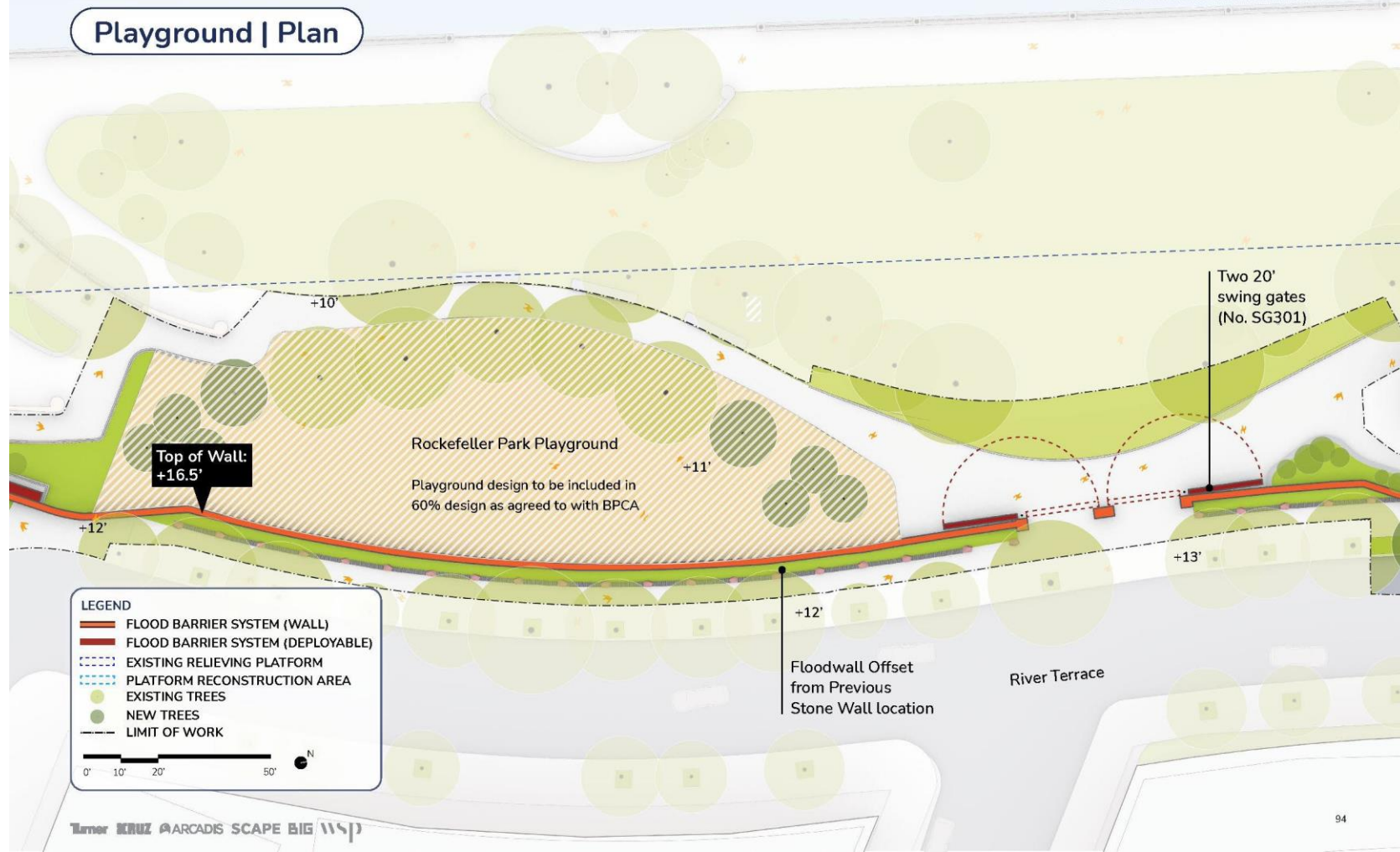




# Rockefeller Park | Plan

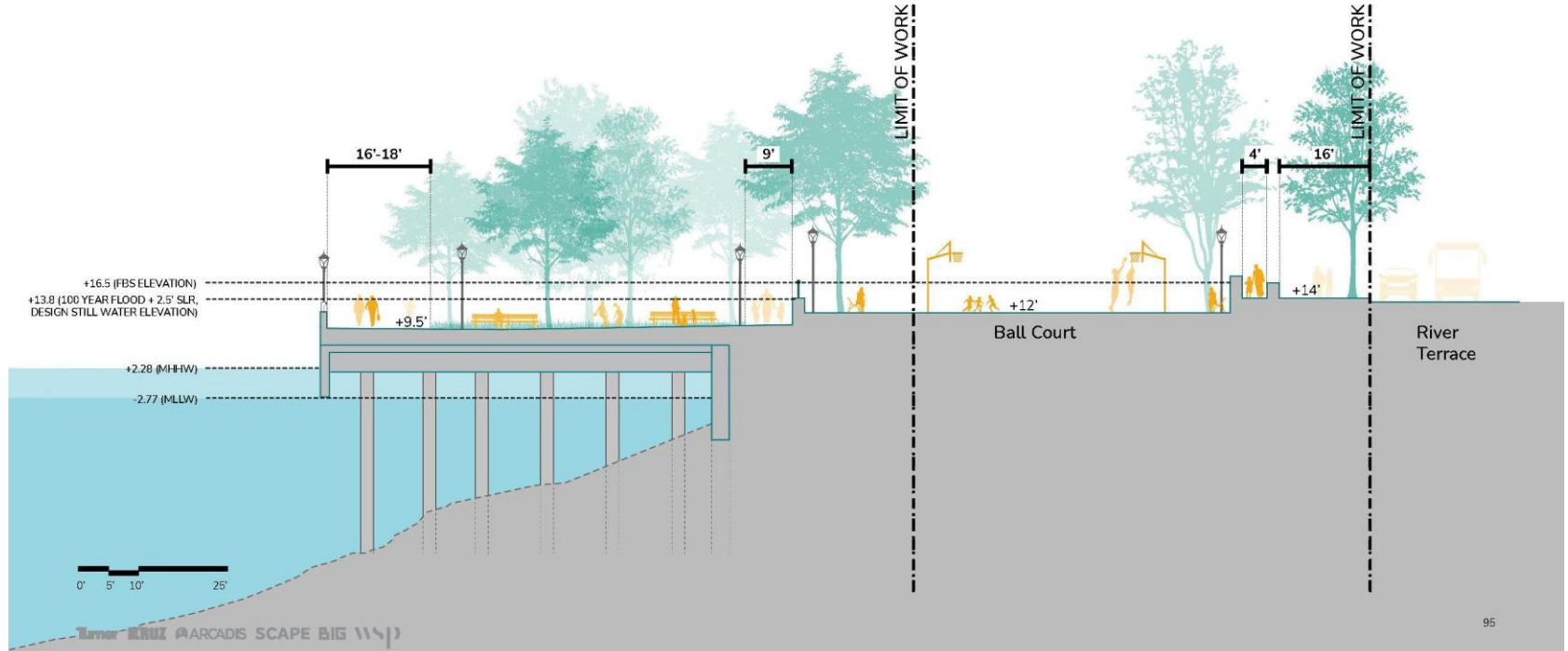
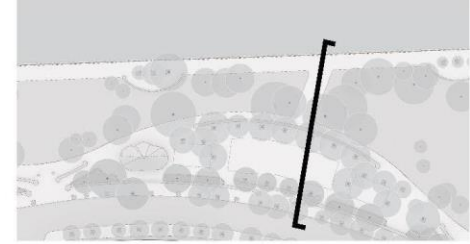


# Playground | Plan



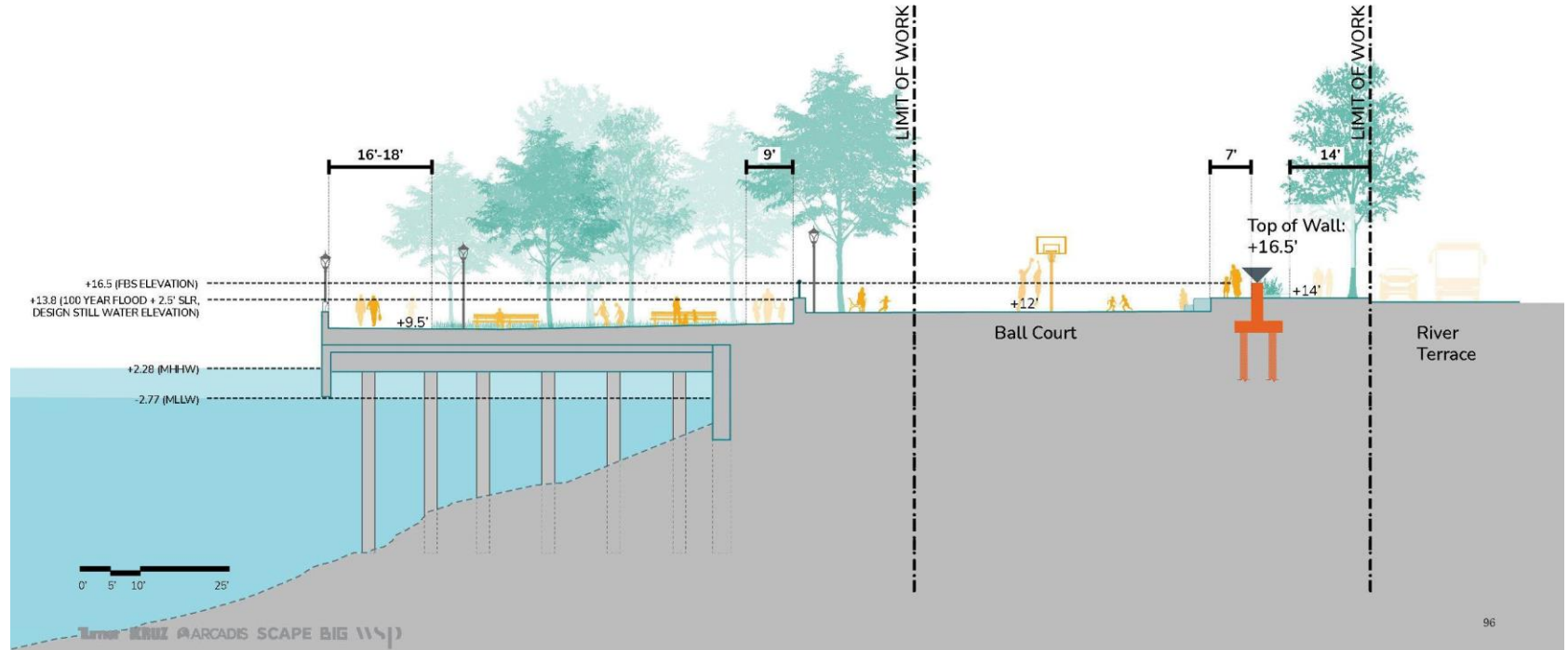
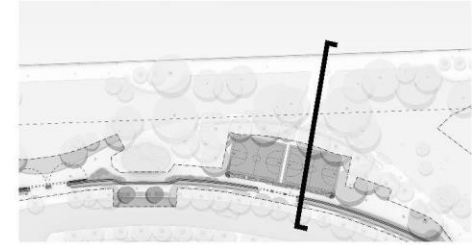
# Ball Court | Section

Existing



# Ball Court | Section

Proposed





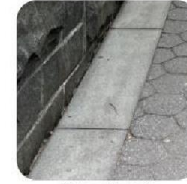
## Existing Palette - Rockefeller Park



Hex Paver



Cobblestone



Stone Band



Demetri Pavilion Paver



Pink Granite



Railing



Typical Light Pole



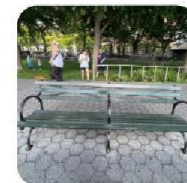
Plant Rail



Stone Wall



Concrete Benches



1939 World's Fair Bench



Plant Rail



Stone Curbs




Metal Fence



Stone Balustrade



 Proposed New Material

## Proposed Palette - Rockefeller Park



Hex Paver



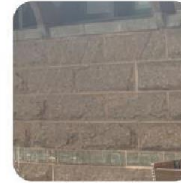
Cobblestone



Stone Band



Demetri Pavilion Paver



Pink Granite



Railing



Typical Light Pole



Plant Rail



Stone Wall



Concrete Benches



1939 World's Fair Bench



Plant Rail



Stone Curbs



Metal Fence



Precast Seating



Stone Edge

## Proposed Paving



Non-permeable  
Hex Asphalt  
Paver



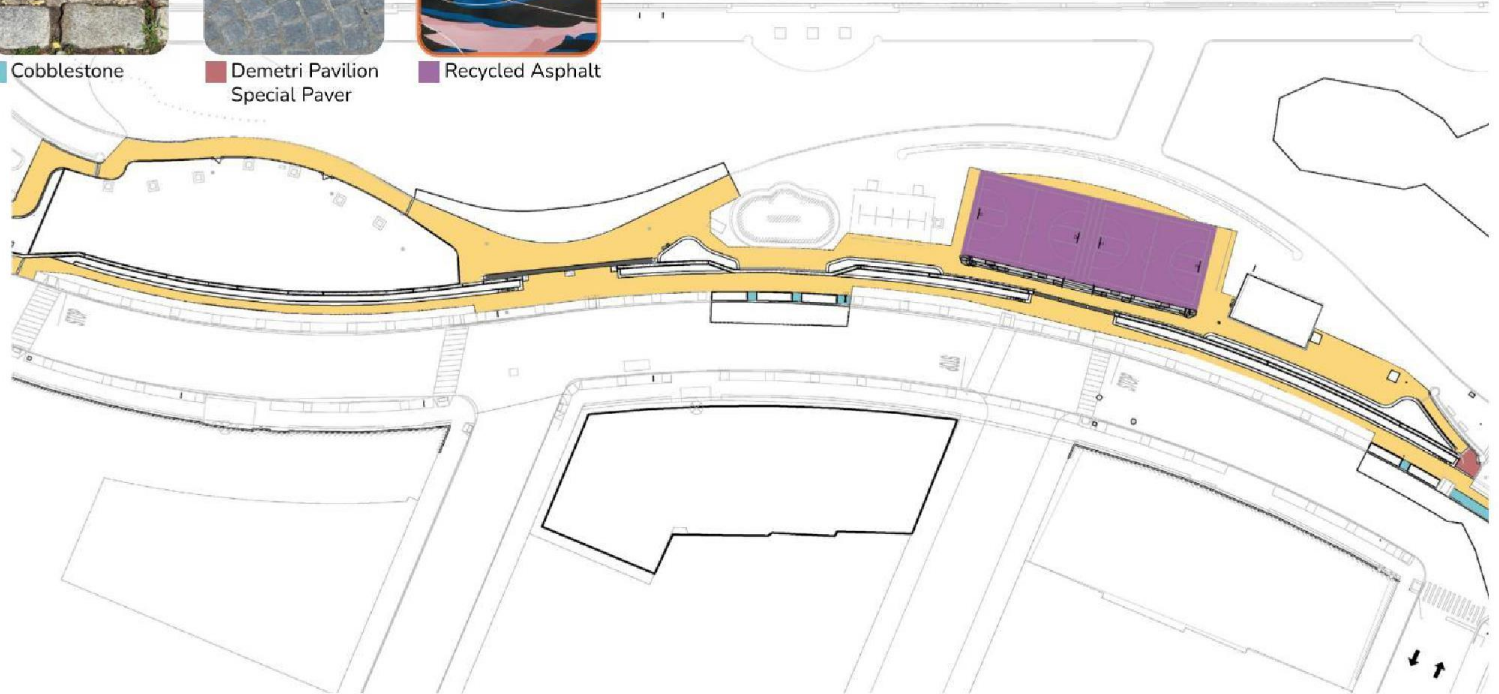
Cobblestone



Demetri Pavilion  
Special Paver



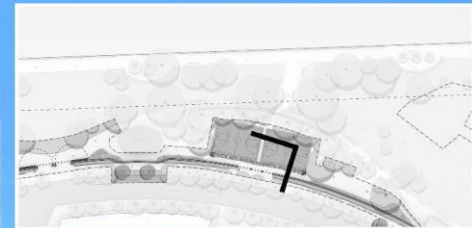
Recycled Asphalt





## Ball Courts | Connection to River Terrace

Existing

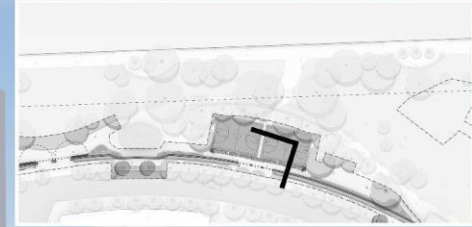


+ 11.90'



## Ball Courts | Connection to River Terrace

Proposed



FBS Wall

(Materiality subject to BPCA 60% decision)

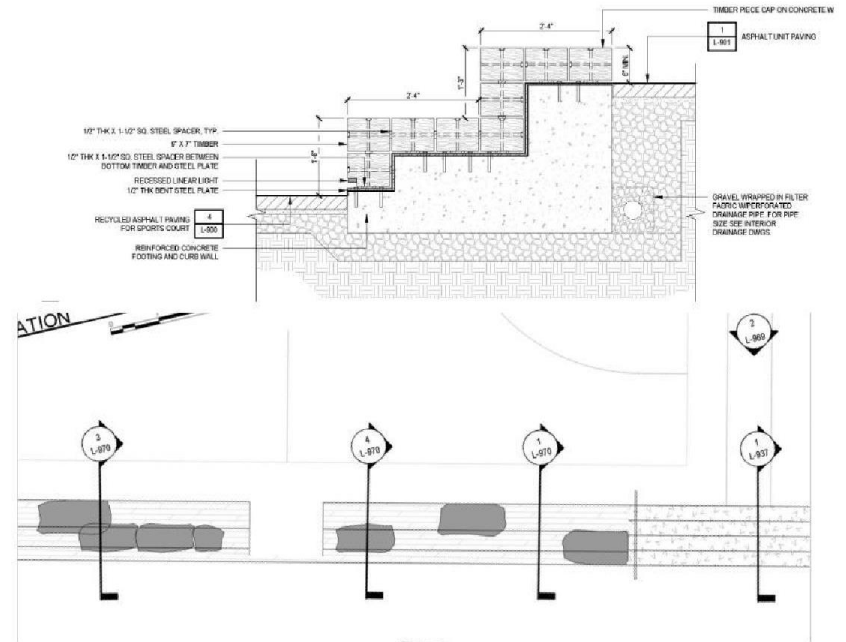
Top of Wall:  
+16.5'

Direct Access to Ball Courts

+14.00'

+11.90'

## Ball Court Seating - 40% Design





## Ball Court Seating - Design Development

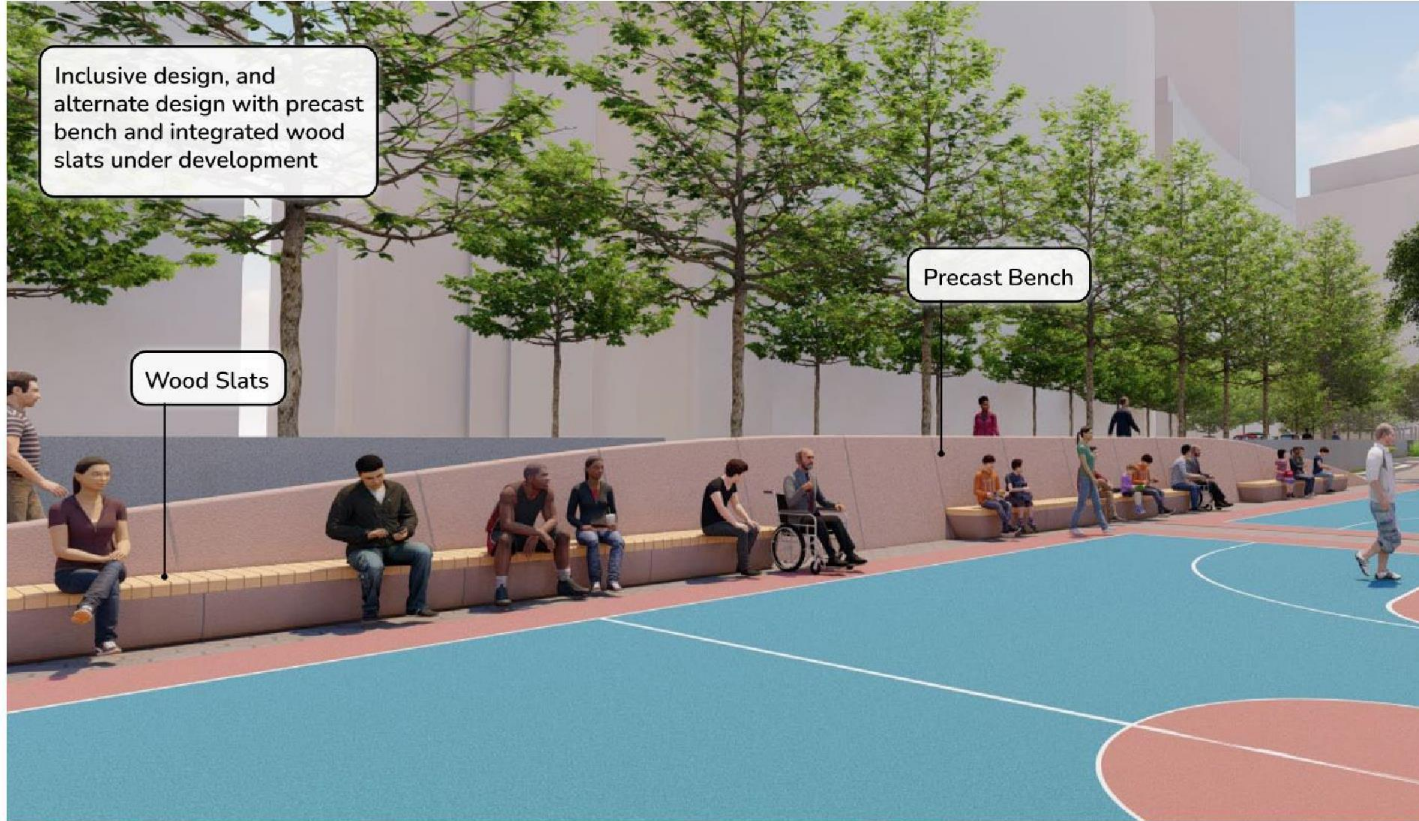
Inclusive design, and alternate design with precast bench and integrated wood slats under development

Wood Slats

Precast Bench



Precast Bench



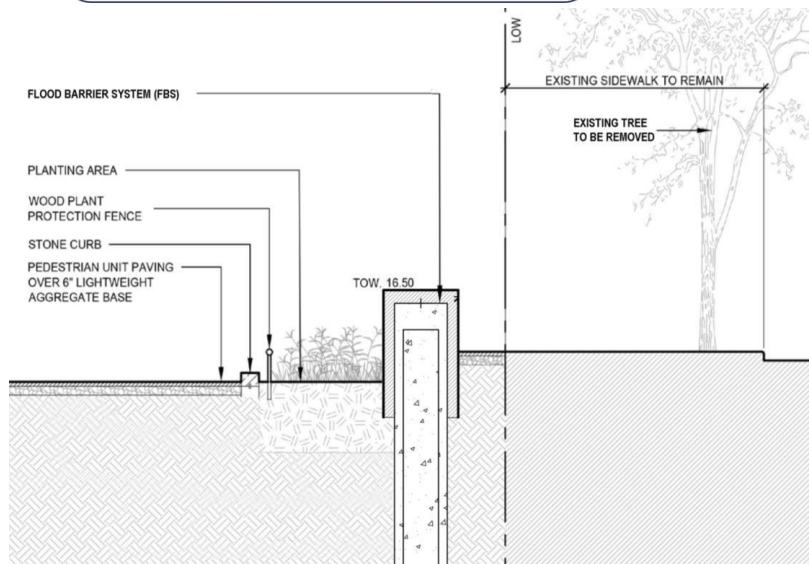
# **RIVER TERRACE: OFFSET WALL APPROACH**

## Existing Conditions: Aerial view





## FBS Alignment Approaches



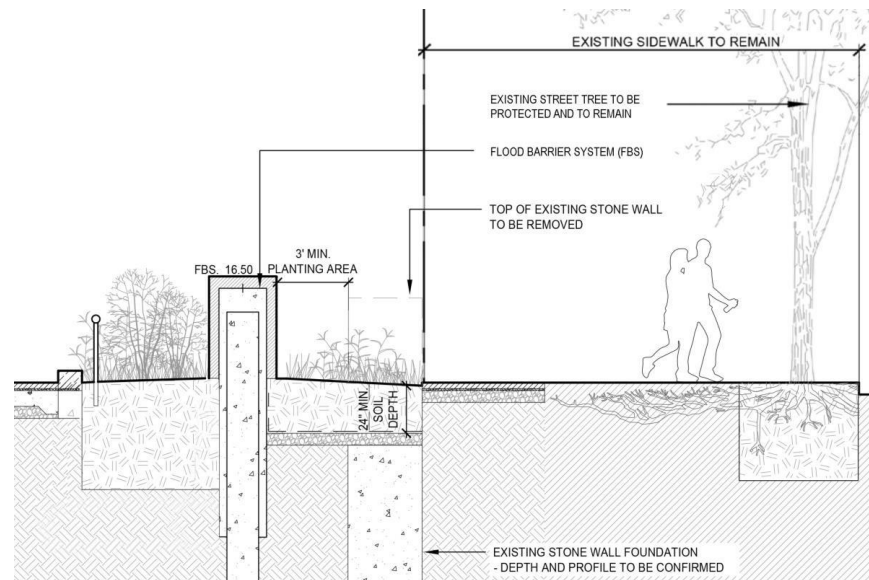
### FBS wall follows existing wall footprint

#### Pros:

- No encroachment into park area

#### Cons:

- Street trees will be removed
- Proximity to FBS will not allow for new trees to be planted
- Utilities in sidewalk will need to be relocated
- Removal of existing wall footing adds construction complexity



### FBS wall shifted into the park

#### Pros:

- Minimizes tree impact to street trees (approx. 20 trees protected)
- If trees are impacted during construction, distance from FBS allows for new trees to be planted
- Avoids utility conflict
- Avoids removal of existing wall footing (reduced construction complexity)

#### Cons:

- Limited encroachment into Rockefeller Park

## Flood Barrier System Follows Existing Wall Footprint: Tree Impact

### Previously Proposed

#### LEGEND

--- LIMIT OF WORK

— PROPOSED FLOOD BARRIER SYSTEM

● IMPACTED TREE

○ TREES RECENTLY REMOVED

● PROTECTED TREE



Note: Some trees to remain within the construction envelope will require special protection measures. While tree protection does not guarantee tree health in the long run, active and passive protection measures will be utilized to the extent possible to preserve and protect individual trees and the overall forest health.

# Flood Barrier System Shifted into the Park: Tree Impact

## Updated Proposed Approach

### LEGEND

--- LIMIT OF WORK

— PROPOSED FLOOD BARRIER SYSTEM

● IMPACTED TREE

○ NEW PROPOSED TREES

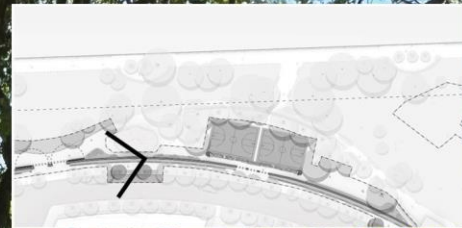
● PROTECTED TREE



Note: Some trees to remain within the construction envelope will require special protection measures. While tree protection does not guarantee tree health in the long run, active and passive protection measures will be utilized to the extent possible to preserve and protect individual trees and the overall forest health.



## Existing Conditions: View along Sidewalk



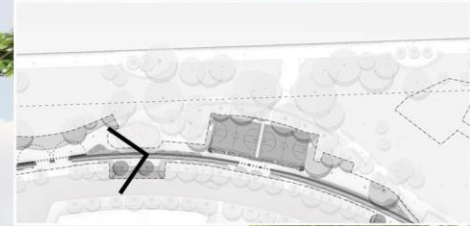
Top of Wall: +15.75'

2.75'

+13.00'



## Proposed Design: View along Sidewalk



Stormwater Bioswale

Floodwall Offset from  
Previous Stone Wall  
Location, New Planting  
along Sidewalk

Top of Wall: +16.5'


FBS Wall  
Materiality under Development

+13.00'



## Salvaged Stone Edge

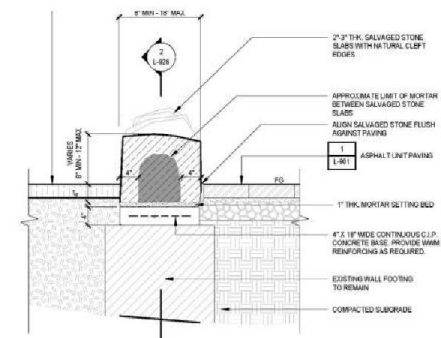
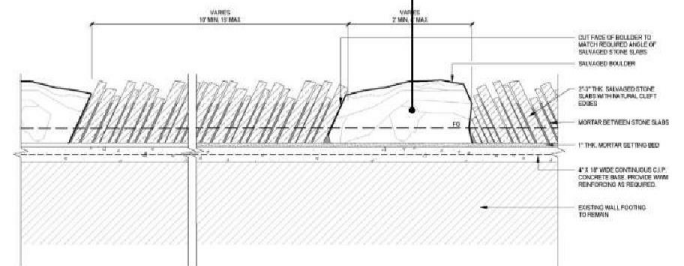


 Proposed New Material



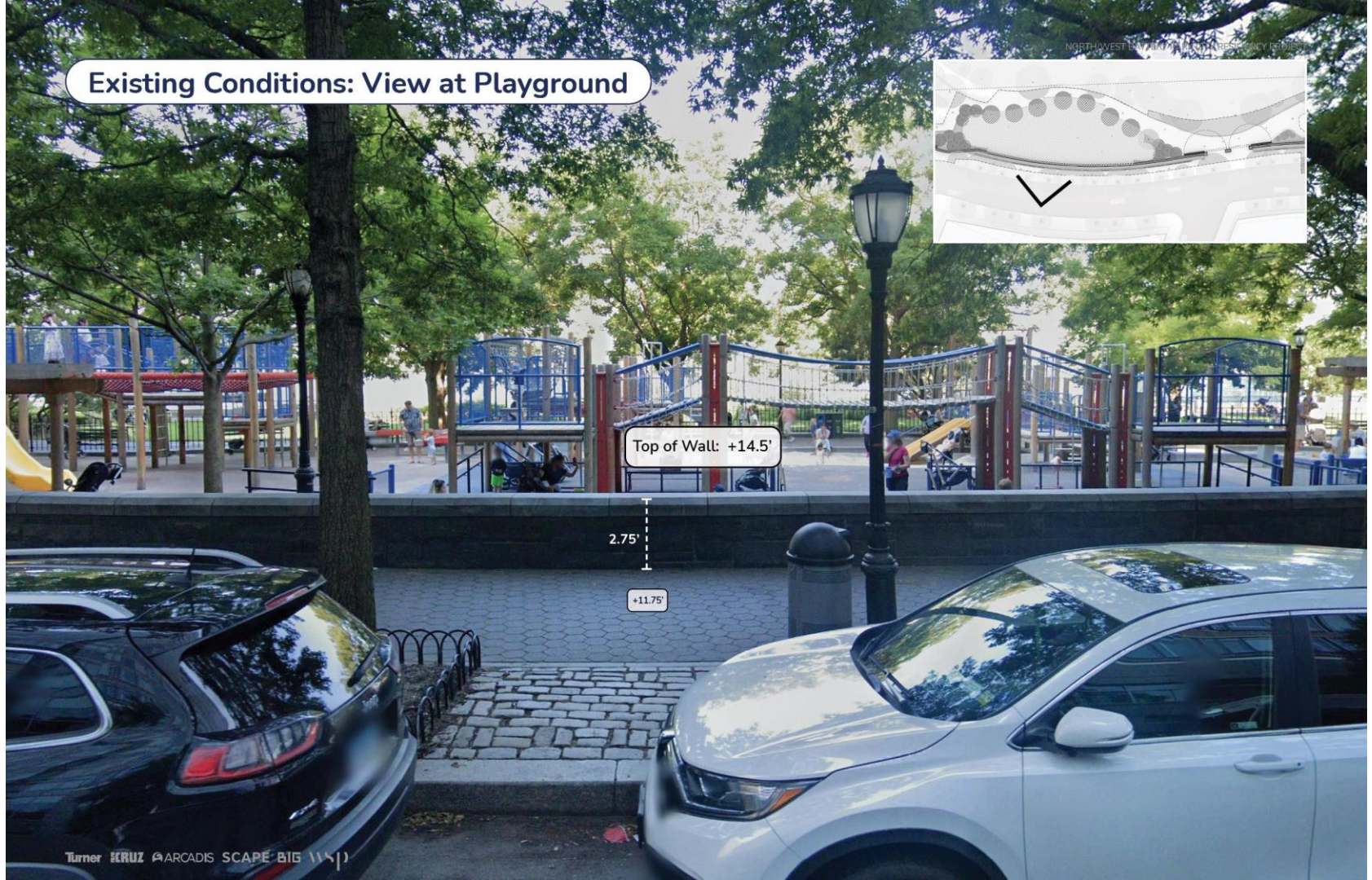
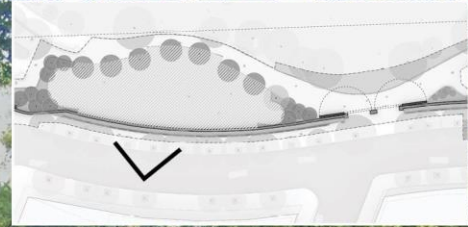
Salvaged Stone

Quarried boulder or other stabilizing measures under development





# Existing Conditions: View at Playground



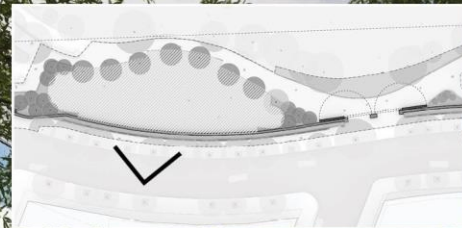
Top of Wall: +14.5'

2.75'

+11.75'



## Proposed Design: View at Playground



**FBS Wall**  
Materiality under Development

Top of Wall: +16.5'

Floodwall Offset from  
Previous Stone Wall  
Location, New Planting  
along Sidewalk

4.75'

+11.75'



## Playground | Aerial View



Rockefeller Park Playground

Existing Street Trees  
to be Protected

Floodwall Offset from  
Previous Stone Wall  
Location, New Planting  
along Sidewalk

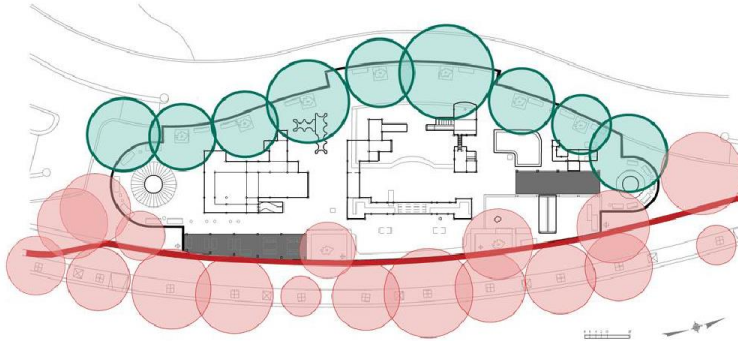
FBS Wall

Materiality subject to BPCL 60% decision



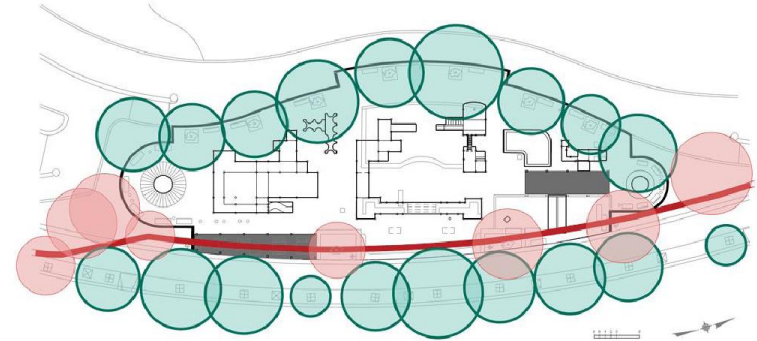
## Comparison: Tree Impact

### Non-Offset Wall



- 27 existing trees within playground vicinity
- 18 trees in total impacted by FBS:
  - 11 street trees
  - 7 playground trees

### Offset Wall

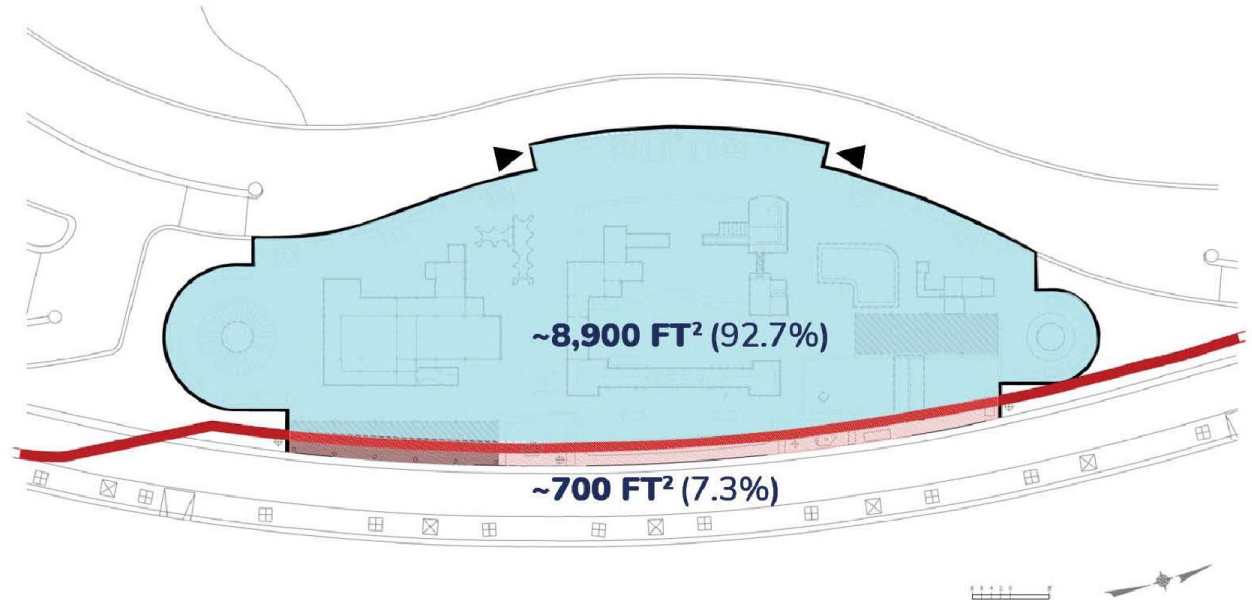


- 27 existing trees within playground vicinity
- 8 trees in total impacted by FBS:
  - 1 street tree
  - 7 playground trees

## Impact of Offset Alignment on Playground Footprint

### LEGEND

- PROPOSED FBS AT OFFSET LOCATION
- USABLE AREA
- AREA LOST TO FBS





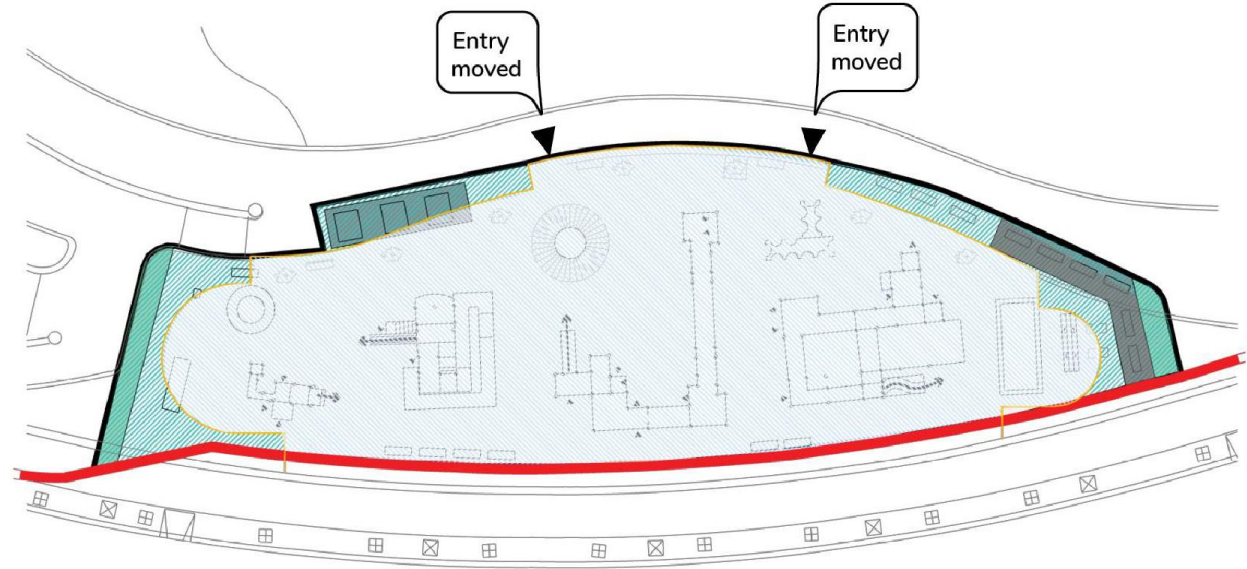
## Offset Alignment with Expanded Footprint

### LEGEND

- PROPOSED FBS OFFSET LOCATION
- CURRENT PLAYGROUND FOOTPRINT
- EXPANDED PLAYGROUND FOOTPRINT

Note: additional area is conducive to seating, stroller space and play features with reduction of planted buffers at playground perimeter

AREAS	SQ. FT
Existing Total	~9,600 ft <sup>2</sup>
Removed for FBS	~700 ft <sup>2</sup>
Added	~1,700 ft <sup>2</sup>
New Total	~10,600 ft <sup>2</sup>



Reach 4 Updates

3





# Lily Pond | Plan



## LEGEND

- FLOOD BARRIER SYSTEM (WALL)
- - - FLOOD BARRIER SYSTEM (DEPLOYABLE)
- - - EXISTING RELIEVING PLATFORM
- - - PLATFORM RECONSTRUCTION AREA
- EXISTING TREES
- NEW TREES
- LIMIT OF WORK

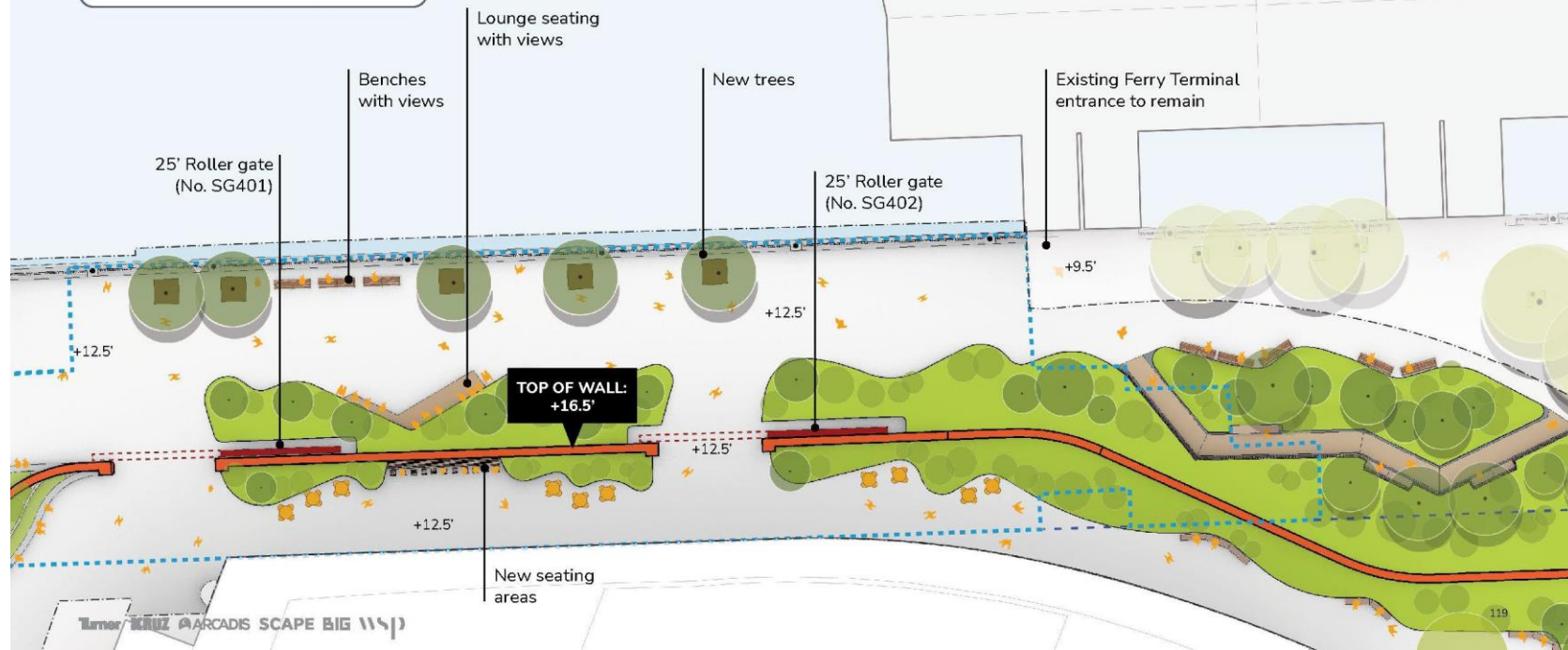




# Esplanade and Ferry Terminal | Plan

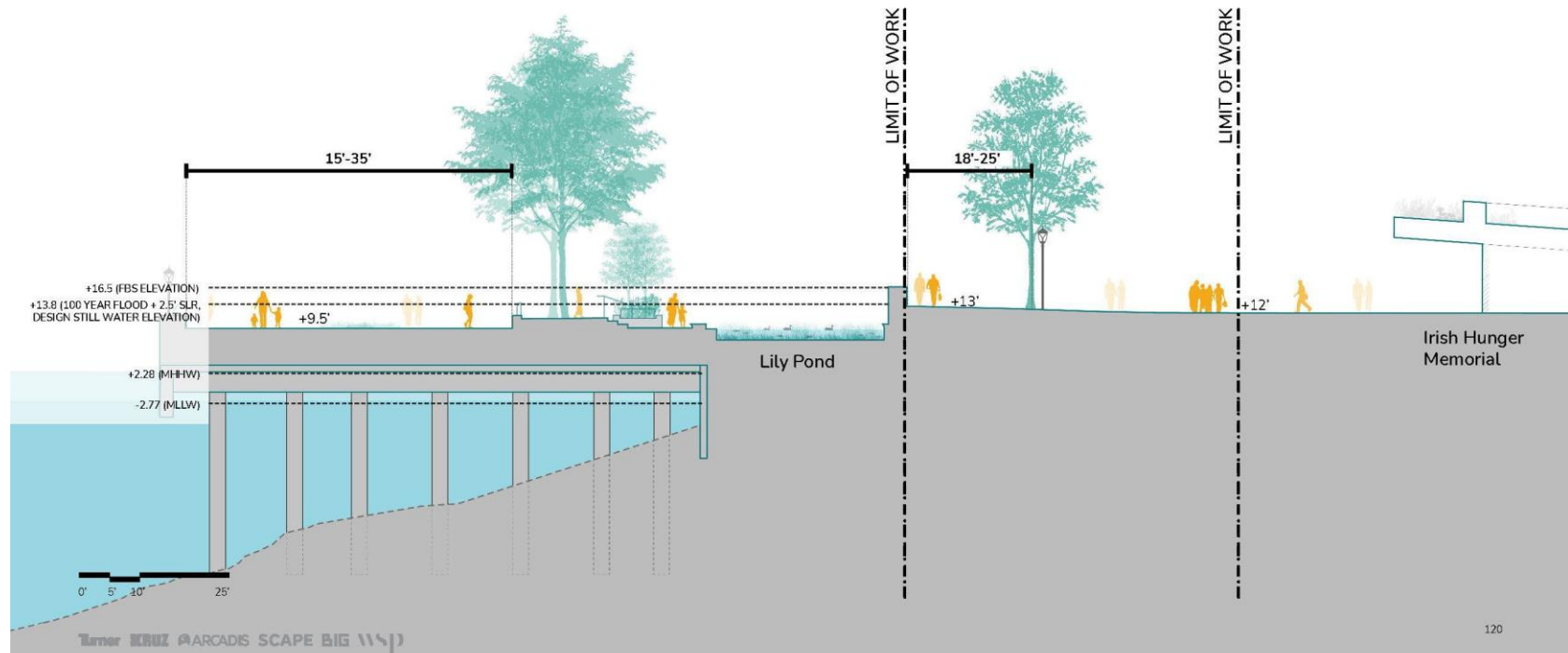
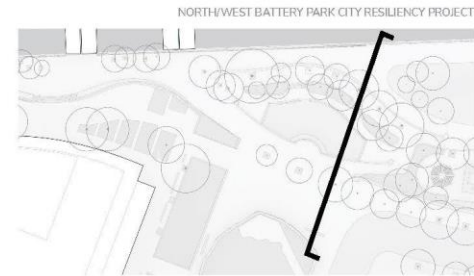
## LEGEND

- FLOOD BARRIER SYSTEM (WALL)
- FLOOD BARRIER SYSTEM (DEPLOYABLE)
- EXISTING RELIEVING PLATFORM
- PLATFORM RECONSTRUCTION AREA
- EXISTING TREES
- NEW TREES
- LIMIT OF WORK



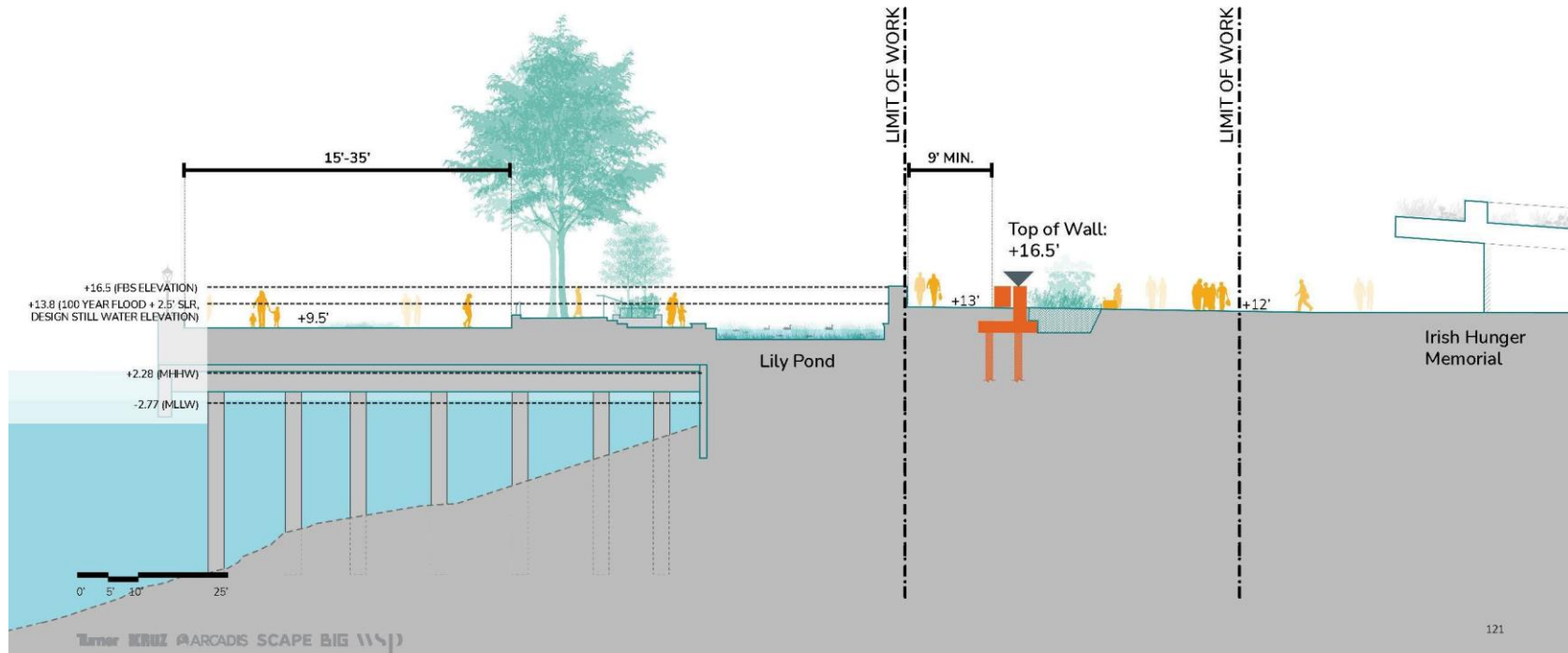
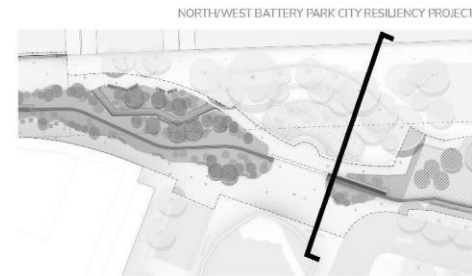
## Lily Pond | Section

Existing





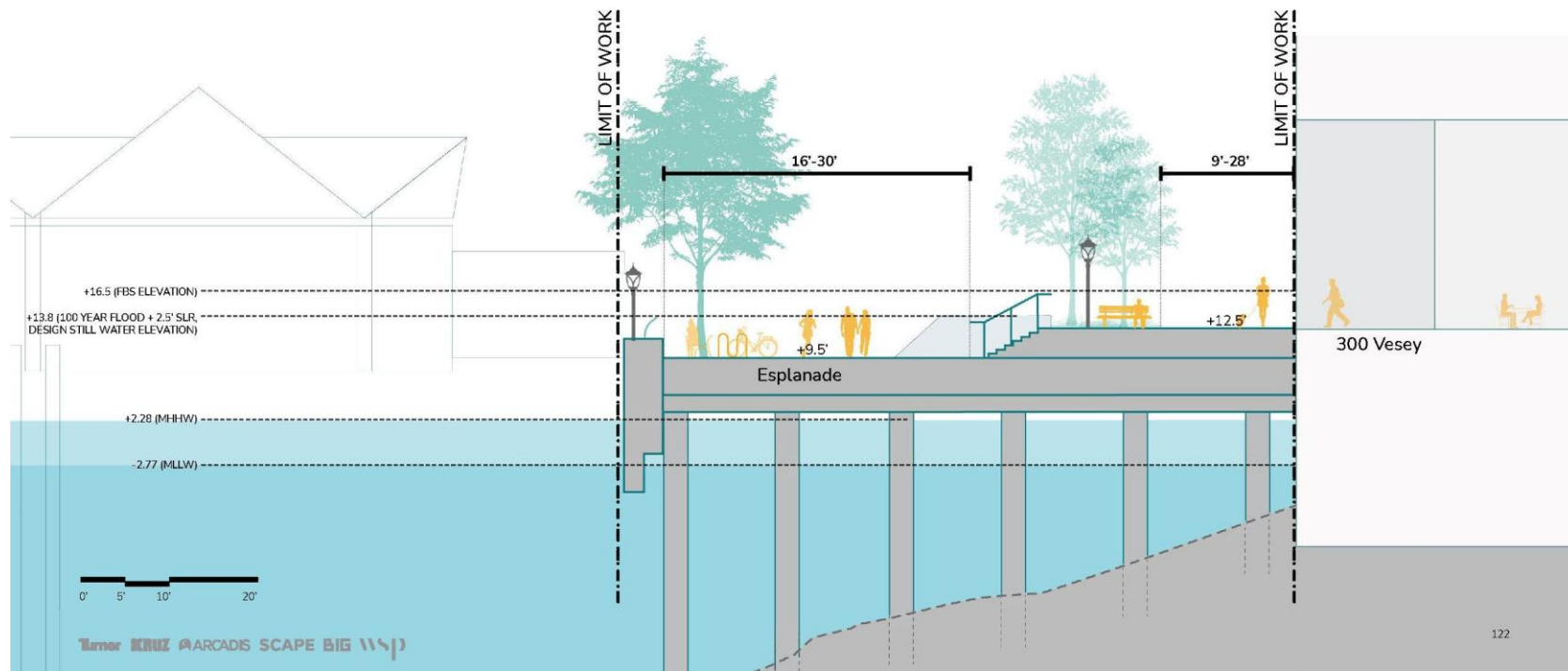
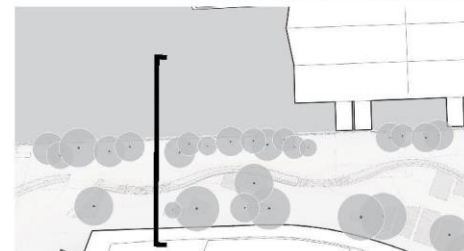
Proposed



## Esplanade | Section

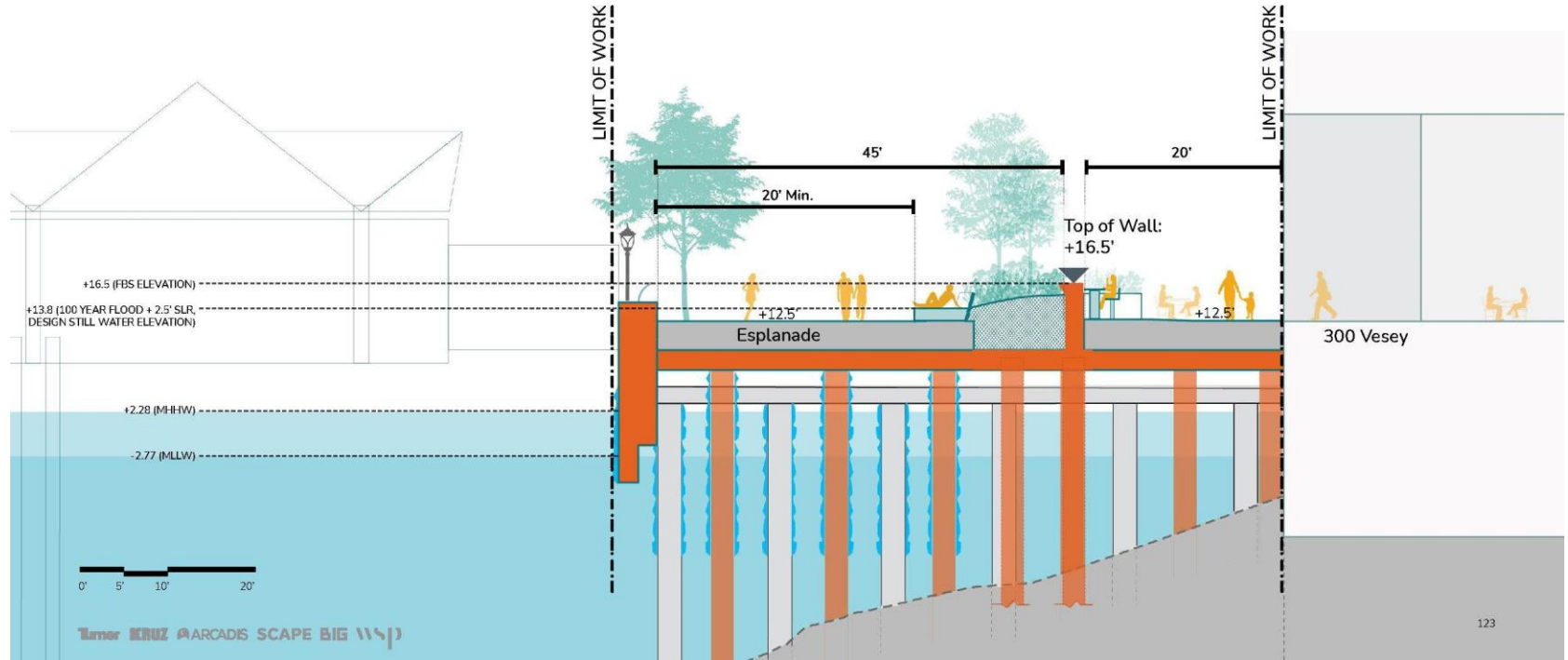
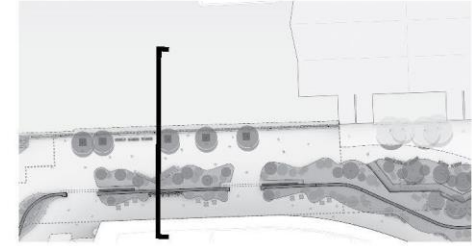
Existing

NORTH/WEST BATTERY PARK CITY RESILIENCY PROJECT



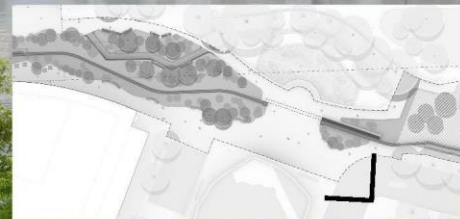


# Esplanade | Section Proposed



## Lily Pond | Aerial View

Proposed



Existing Lily Pond

+12.40'

+13.00'

Expanded planting and seating area and reduced hardscape

+10.00'

FBS Wall

Materiality subject to BPCA 60% decision

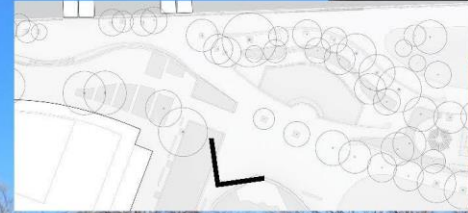
Top of Wall:  
+16.5'

+12.00'



## Lily Pond | View from Irish Hunger Memorial

Existing



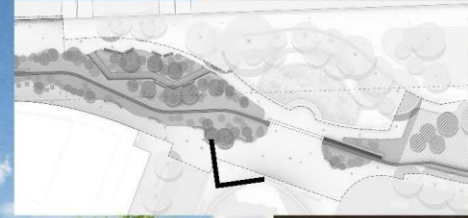
Top of Wall:  
+16.5'

+13.00'



## Lily Pond | View from Irish Hunger Memorial

Proposed



Lush planting and  
seating along floodwall

FBS Wall  
Materiality subject to BPICA 60% decision

Top of Wall:  
+16.5'

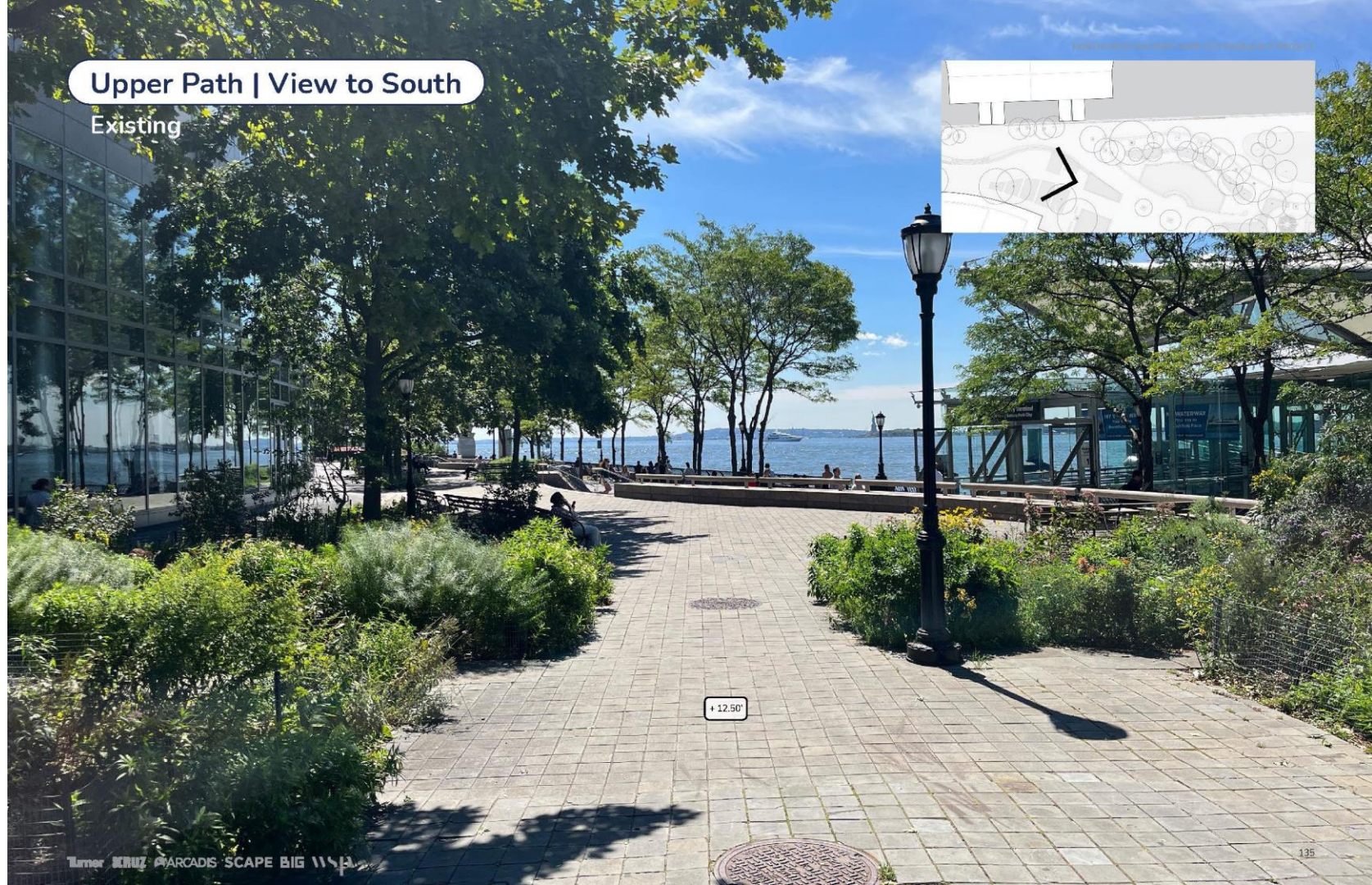
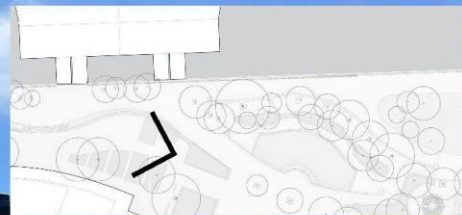
+13.00'

+12.00'



## Upper Path | View to South

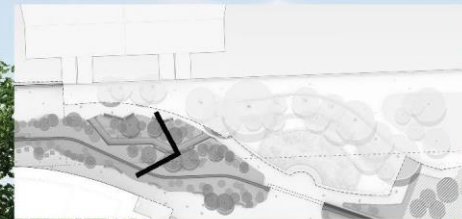
Existing





## Upper Path | View to South

Proposed



Top of Wall:  
+16.5'

Planted Berm

+12.40'



## Ferry Terminal | View from South

Existing



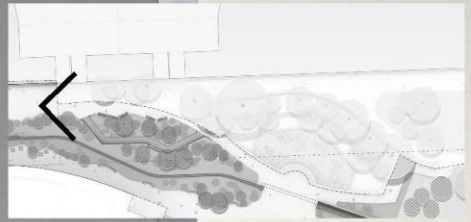
Top of  
Wall: +14'

+ 9.50'



# Ferry Terminal | View from South

Proposed



New expanded  
planting area

Top of Wall:  
+16.5'

New immersive landscape  
area with secondary path

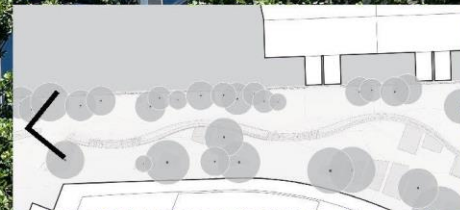
**FBS Wall**  
Materiality subject to BPCA 60% decision

+10.00'



## Esplanade and Ferry Terminal | View to North

Existing



Top of  
Wall: +14'

Typ. Width Range  
16' – 35'

+9.50'



# Esplanade and Ferry Terminal | View to North

Proposed



Custom Lounge Seating

Top of Wall:  
+16.5'

**FBS Wall**  
Materiality subject to BPCA 60% decision

Typ. Width Range  
20' – 26'

+12.50'

+12.50'



## Existing Palette - Ferry & Lily Pond



Hex Paver



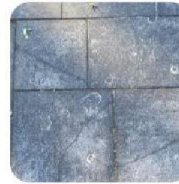
Stone Band



Railing



Plant Rail



Irish Hunger Memorial  
Paver



Typical Light Pole



Drain Covers



Bollards



Lily Pond Stone



1939 World's Fair  
Bench



Glass Benches



Natural Cleft Pink Granite  
w/ Wood Handrail



Cobblestone




Bluestone Paver



Flamed Granite Paver



 Proposed New Material

## Proposed Palette - Ferry & Lily Pond



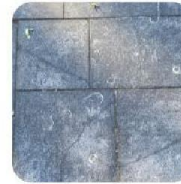
Hex Paver



Stone Band



Railing



Irish Hunger Memorial  
paver



Typical Light Pole



Drain Covers



Bollards



Lily Pond Stone



1939 World's Fair  
Bench



Glass Benches



Timber Loungers



Bar and Stools



Precast Plank Pavers



Wood-Clad Planter Wall



Movable Table and  
Chairs



## Proposed Paving



Non-permeable  
Hex Asphalt  
Paver



Irish Hunger  
Memorial special  
paver



Permeable Hex  
Asphalt Paver  
(Romex)



Precast Plank  
Paver



 Proposed New Material

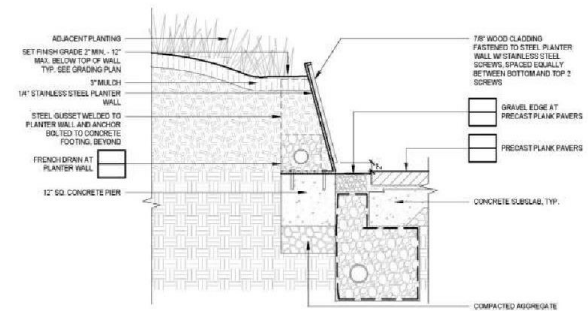
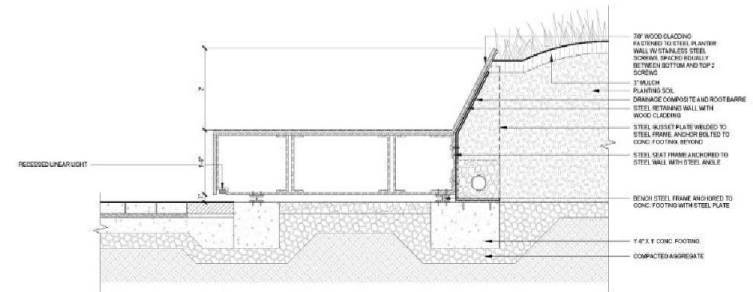
## Lounge Seat and Wood-Clad Planter Wall



Lounge Seat




Wood-Clad Planter Wall





## Secondary Landscape Path



 Proposed New Material



Precast Plank Pavers



Wood Bench



Wood-Clad  
Planter Wall



Gravel Edge

