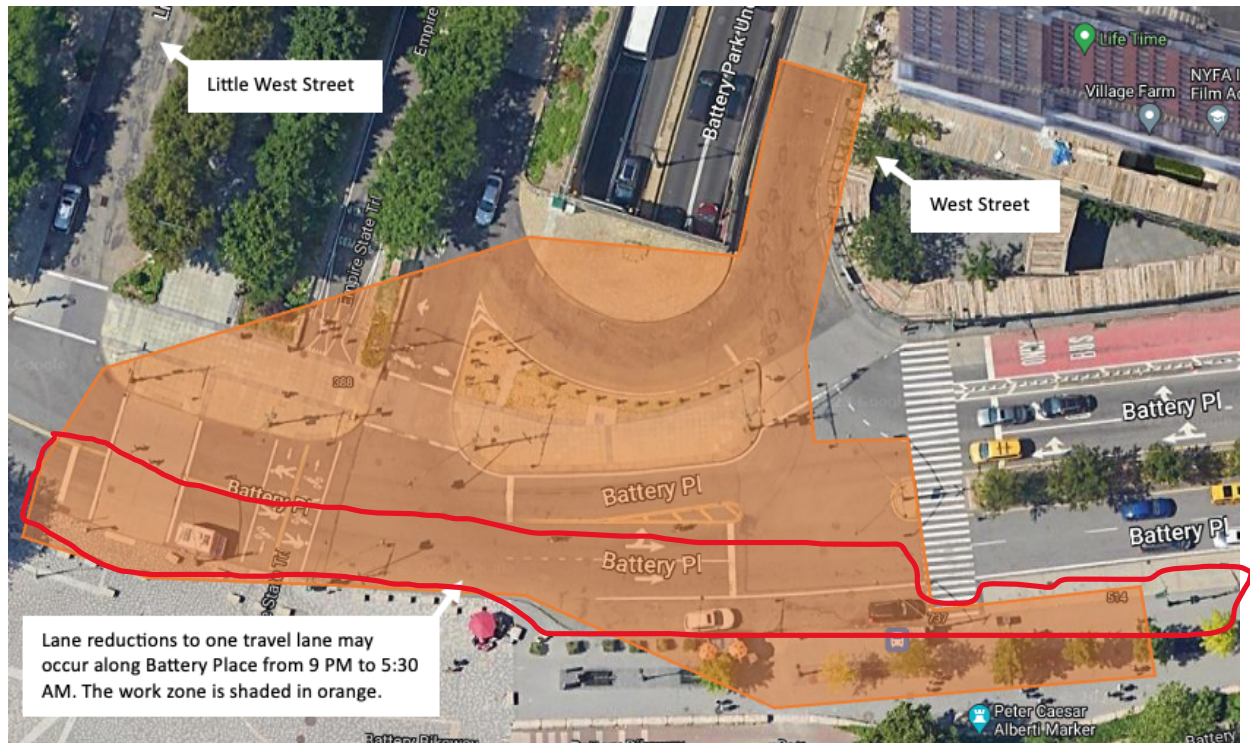


Travel Advisory

South Battery Park City Resiliency Project

Starting Thursday, January 4 through Friday, January 5, utility work along Battery Place in Lower Manhattan will be performed. As a result, travel lanes along Battery Place and West Street, between Little West Street and West Street, may be reduced to one lane in each direction (non-simultaneously) from 9PM to 5:30AM.



The South Battery Park City Resiliency Project (SBPCR) represents one of several projects within the overall Lower Manhattan Coastal Resiliency (LMCR) Master Plan. SBPCR is a BPCA capital project designed to provide flood risk reduction for Battery Park City and Lower Manhattan in response to increasingly frequent and more severe storms. More information about SBPCR can be found at <https://bpcanyc.gov/sbpcrp/>.

Questions and feedback about SBPCR can be directed to:
Katie MacDougall
Community Construction Liaison
(917) 624-5409



**Battery Park
City Authority**