

NORTH/WEST BATTERY PARK CITY RESILIENCY PROJECT

Reach 3-4 Workshop

February 8, 2023



Battery Park
City Authority

Turner & CRUZ ARCADIS SCAPE BIG WSP

Project Team

CLIENT TEAM:

CLIENT:



ADVISORS:



CONSULTANTS:



DESIGN-BUILD TEAM:

PRIMARY CONTRACT:



CONSULTANT:



SUB-CONSULTANTS:



Today's Workshop

- 1. Introduction and Project Overview (20 mins)**
- 2. Small Group Discussion (1 hour)**
- 3. Small Group Report Out and Response (1 hour)**
- 4. Closing Remarks**

Project Schedule



Precise construction completion dependent upon agency permitting and approvals

A Piece of a Connected & Resilient Waterfront

US ARMY CORPS OF
ENGINEERS NY-NJ HARBOR
AND TRIBUTARIES STUDY

TRIBECA

SEAPORT

FINANCIAL
DISTRICT

BROOKLYN BRIDGE - MONTGOMERY
COASTAL RESILIENCE
.80 MILES

EAST SIDE COASTAL
RESILIENCY

BATTERY PARK CITY
RESILIENCE PROJECTS
1.15 MILES

THE BATTERY
COASTAL RESILIENCE
.33 MILES

THE FINANCIAL DISTRICT AND SEAPORT
CLIMATE RESILIENCE MASTERPLAN
HIGHLY CONSTRAINED AREA
.90 MILE



Today's Focus Area



Future Flood Risk



Reach 3 + 4

FERRY TERMINAL

REACH 3

ESPLANADE

LILY POND

ROCKEFELLER PARK

REACH 4

PLAYGROUND

IRISH HUNGER
MEMORIAL

Rockefeller Park and Lawns

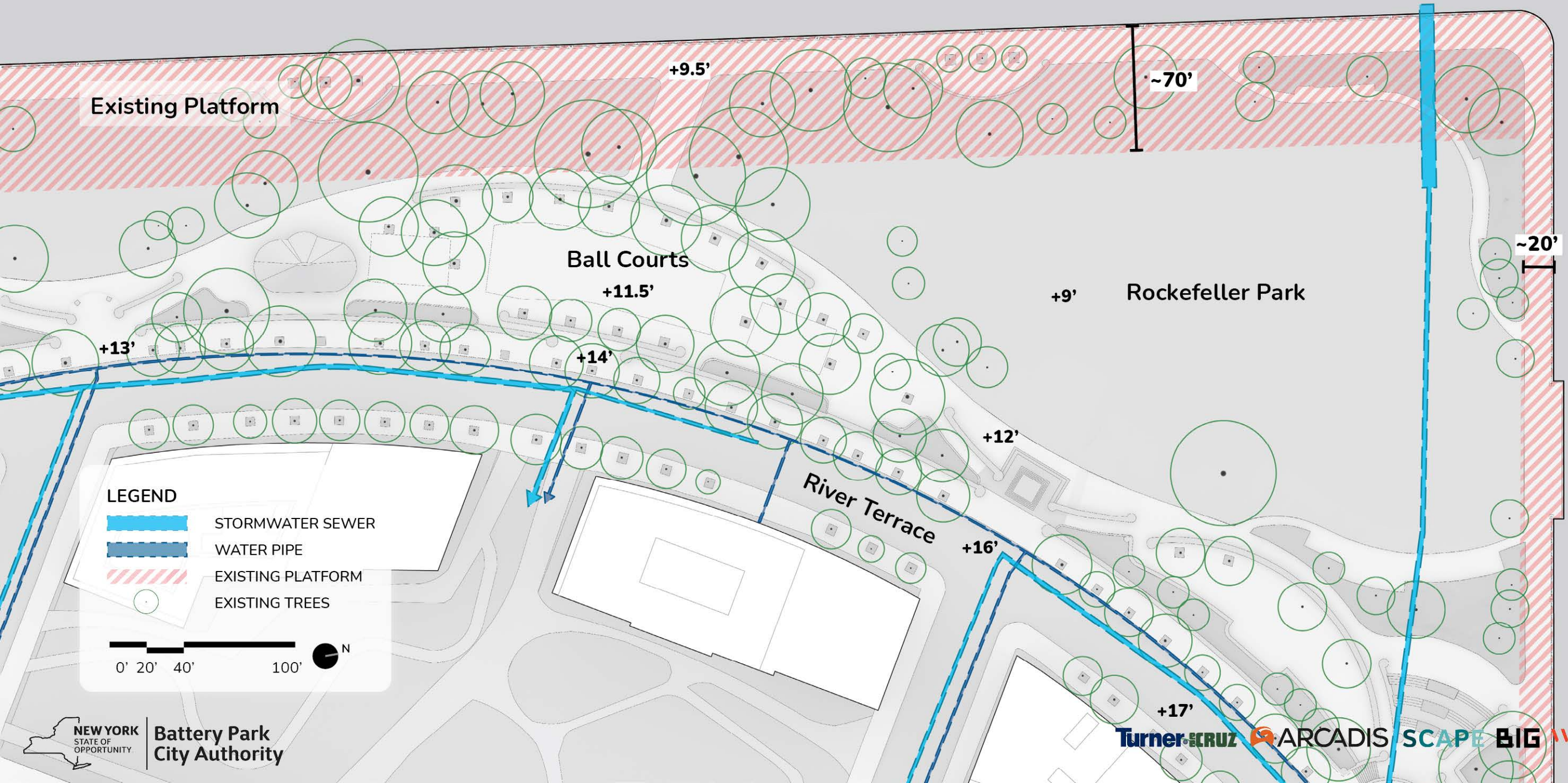
REACH 3

ROCKEFELLER PARK

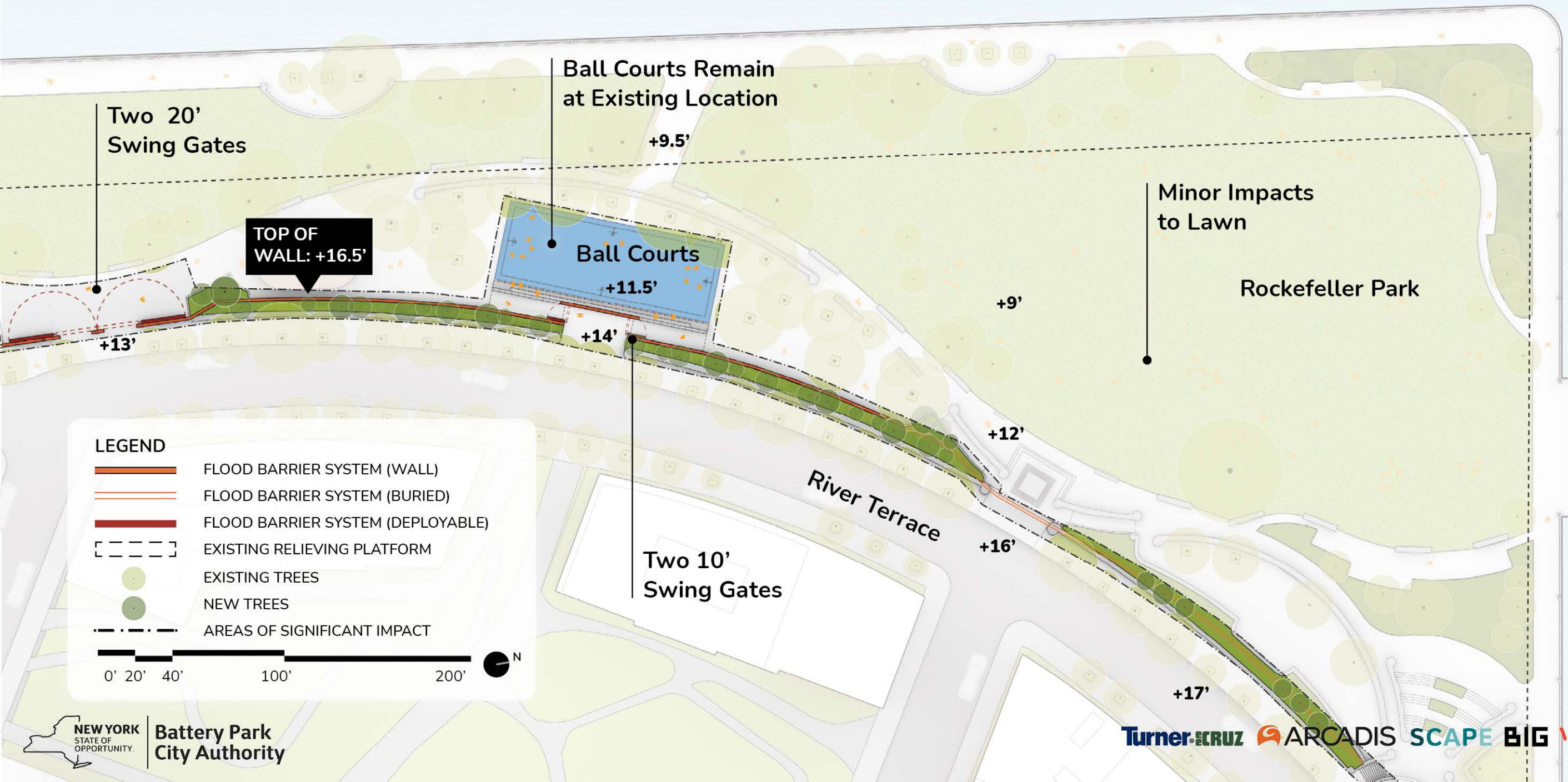
What We Heard

- Minimize changes to the existing space
- Minimize impact to existing trees

Design Constraints



Proposed Design



Rockefeller Park Playground

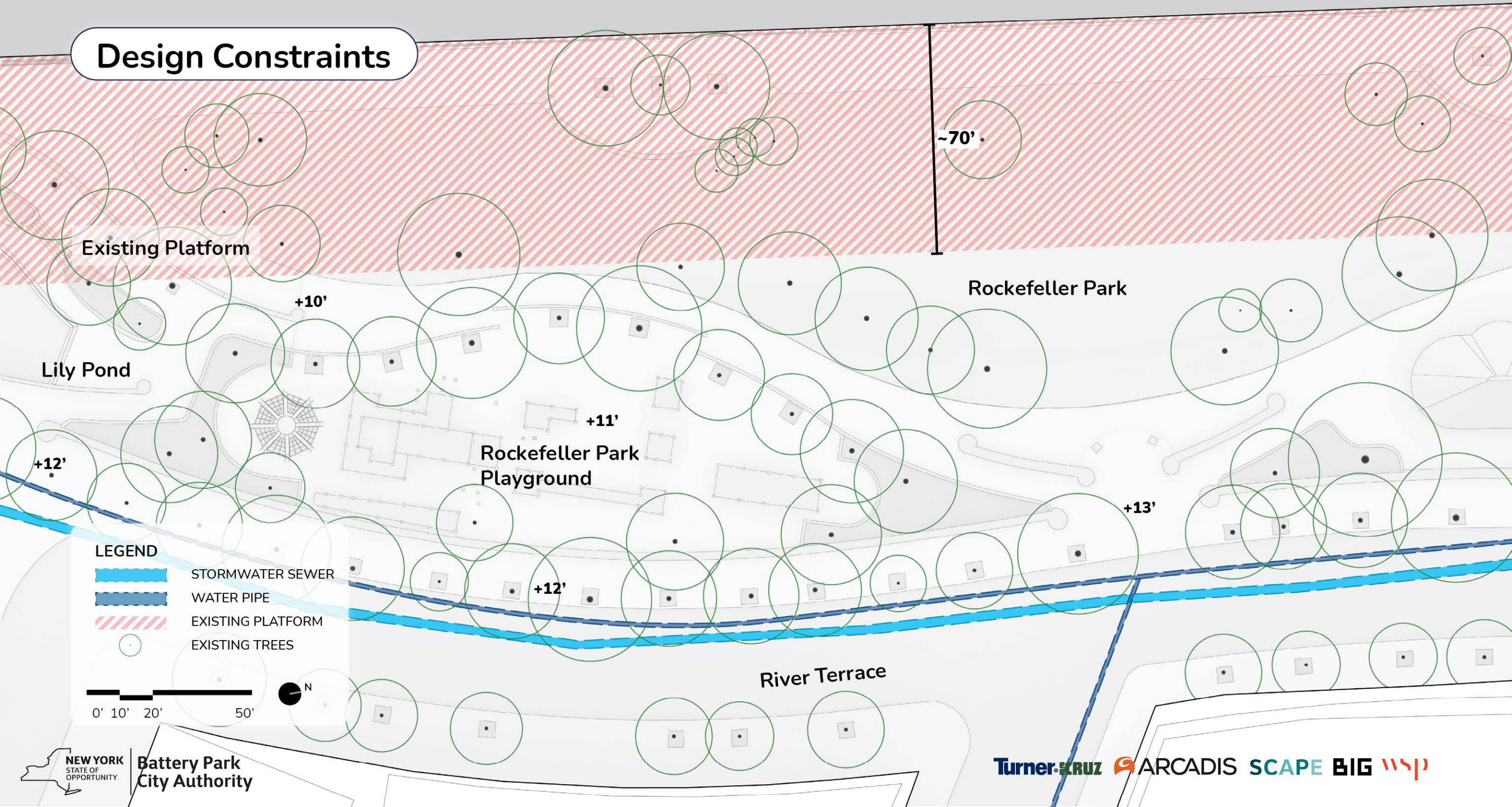
REACH 3

PLAYGROUND

What We Heard

- Minimize impact to existing play equipment
- Minimize duration of playground closure
- Maintain connectivity to Rockefeller Park
- Minimize impact to existing trees

Design Constraints



LEGEND

- STORMWATER SEWER
- WATER PIPE
- EXISTING PLATFORM
- EXISTING TREES

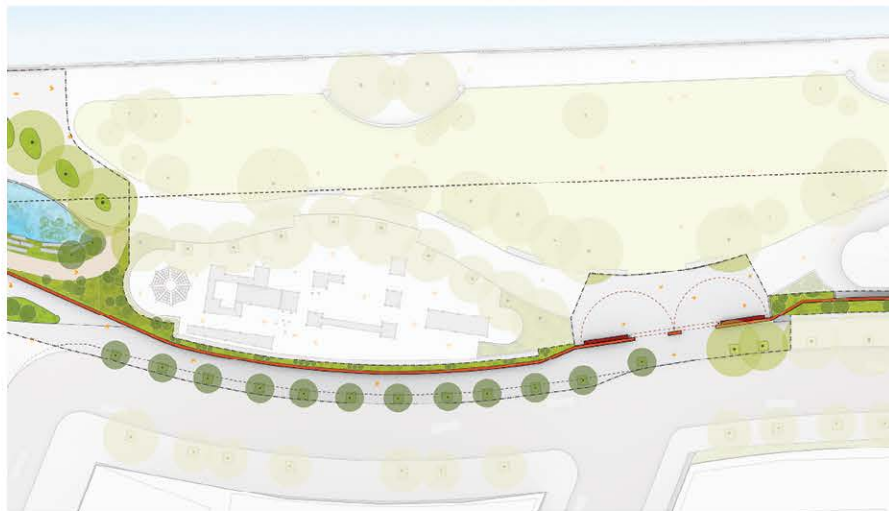
0' 10' 20' 50'



New Design Options

1: Floodwall along street next to existing stone wall

Constructed from street with impacts to street trees and River Terrace, minimal playground impact



2: Floodwall along street replacing existing stone wall

Constructed from park with reconstructed playground and minimal street impact

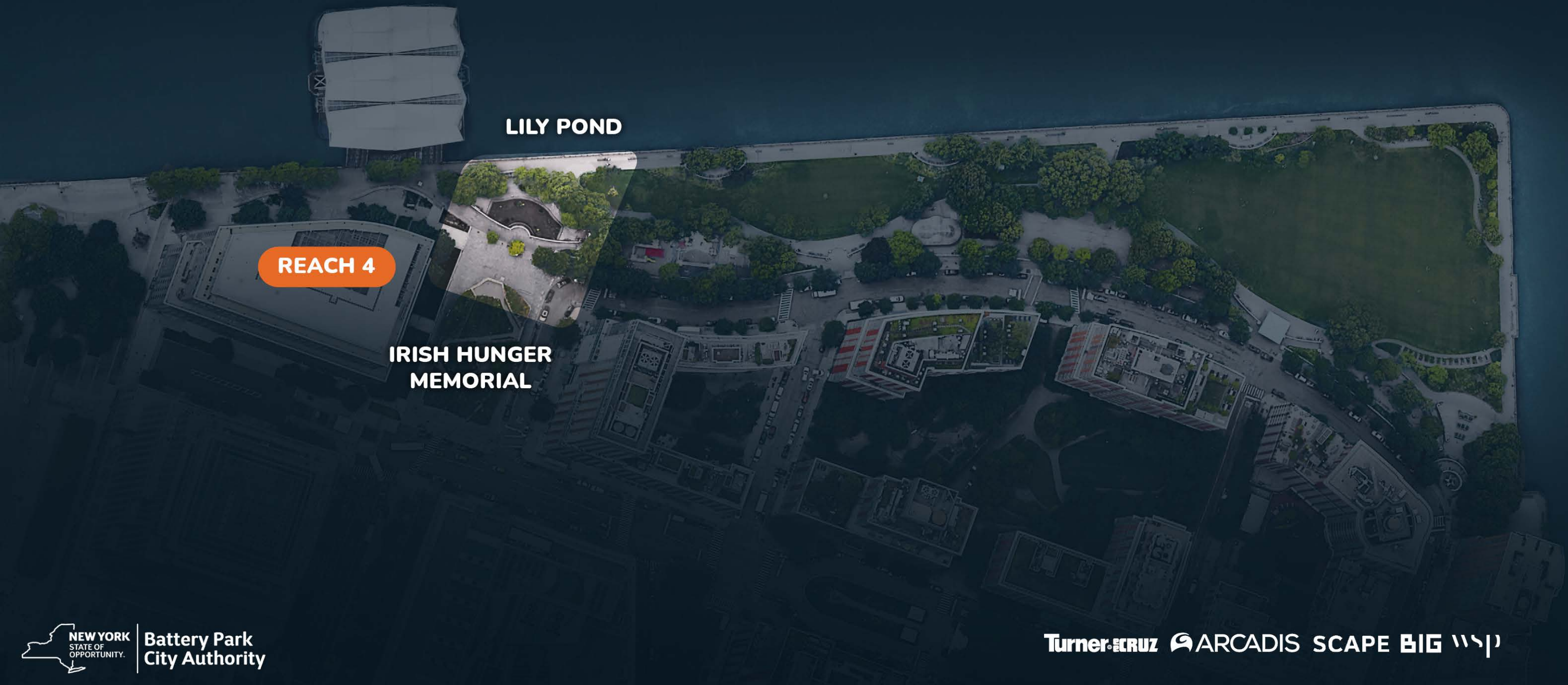


3: Floodwall between park and playground

Constructed from park with reconstructed and raised playground and no street impact



Lily Pond and Irish Hunger Memorial Area



LILY POND

REACH 4

IRISH HUNGER
MEMORIAL

What We Heard

- Respect and reflect qualities of the existing space
- Improve and enhance circulation and accessibility
- Enhance the ecological and habitat value
- Minimize impact to existing trees

Design Constraints

Ferry Terminal

Esplanade

Rockefeller Park

Lily Pond

Playground

Irish Hunger Memorial

LEGEND

- COMBINED SEWER OVERFLOW
- STORMWATER SEWER
- WATER PIPE
- EXISTING PLATFORM
- PLATFORM REPLACEMENT
- EMERGENCY VEHICLE ACCESS
(20' WIDTH)
- EXISTING TREES

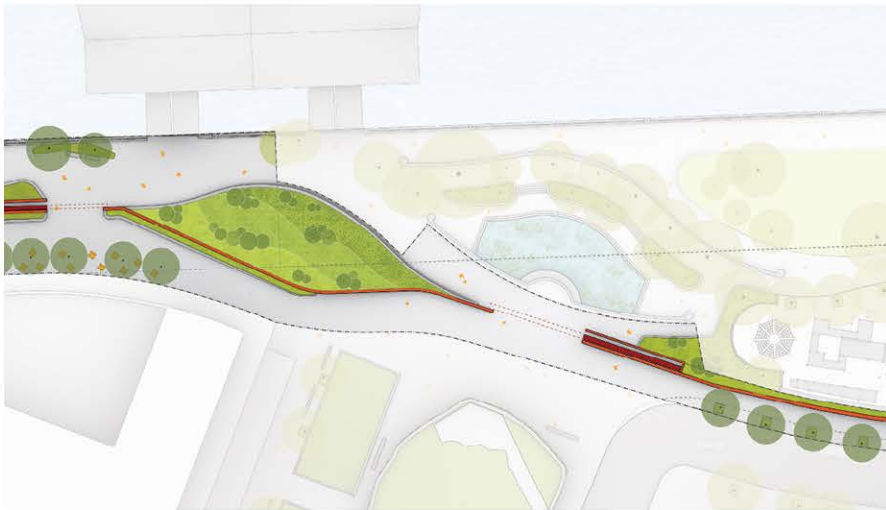
0' 10' 20' 50'



New Design Options

1: Floodwall and roller gate

Minimal impact to lily pond



2: Floodwall with swing gates and plaza regrading

Expanded lily pond with habitat improvements



3: Passive berm with partially concealed floodwall

Berm and expanded lily pond with habitat improvements



Esplanade and Ferry Terminal

ESPLANADE

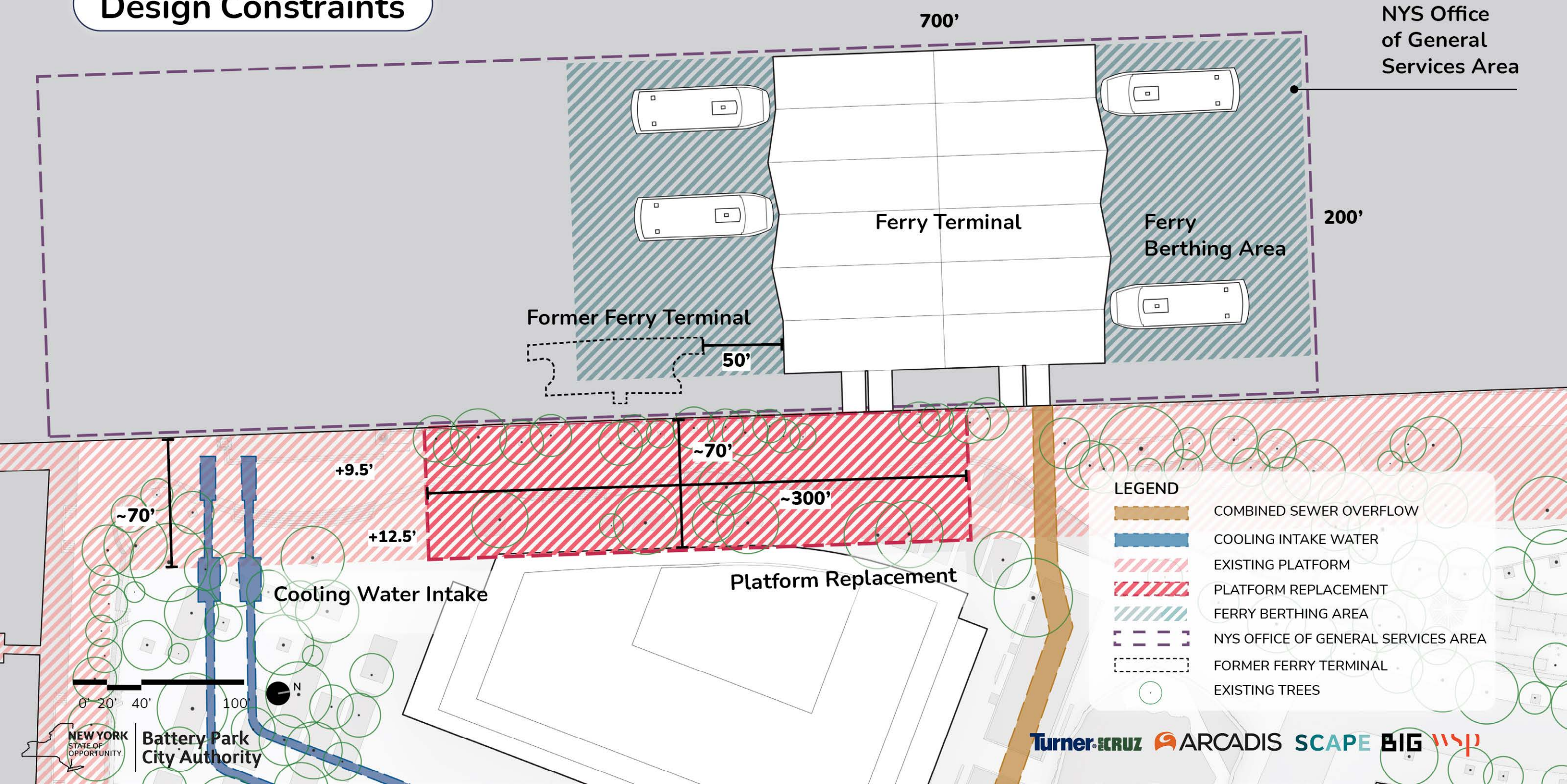
FERRY
TERMINAL

REACH 4

What We Heard

- Existing ferry operation is a source of disruption due to noise and vibrations
- Moving the ferry terminal to the north, even temporarily, will exacerbate these challenges

Design Constraints



Ferry Terminal: Next Steps Underway

- Evaluation of alternatives is still underway, and no option has been eliminated.
- Additional coordination with PANYNJ – better understanding of operational constraints and flexibility.
- Better understanding of concerns with intake sedimentation and potential mitigation options
- Construction logistics development for temporary relocation during construction or for leaving the terminal in place during construction – what is really feasible?
- What are the tradeoffs for a permanent terminal relocation after construction?

Today's Workshop

- 1. Introduction and Project Overview (20 mins)**
- 2. Small Group Discussion (1 hour)**
- 3. Small Group Report Out and Response (1 hour)**
- 4. Closing Remarks**