

**Project: South Battery Park City Resiliency Project:  
Pier A Plaza / Battery Site Work and Near  
Surface Isolation (“NSI”) Construction Services  
(the “Project”) Request for Proposals (“RFP”)**

**Date: February 13, 2023**

**RE: Addendum #11  
# of Pages: 6**

---

**REVISIONS TO RFP:**

The following revised Pier A/Battery and NSI Project Drawings are hereby formally incorporated into the RFP’s Exhibit B-1 – Construction Documents (Project Drawings & Specifications). The below-listed revised Drawings replace and supersede all prior versions issued with the RFP. Note that the changes to the below-listed revised Drawings are indicated via “bubbles” (revision clouds) that circle the areas of the Drawings that are revised.

• **Revised Landscape Drawings – Attachment #1:**

***L325: Pier A Inlet Soil Plan***

***L344: Elevations – Pier A Bikeway Wall***

***L950: Details – Pier A Stair Sections***

***L951: Details – Pier A Seat Wall Sections***

---

*By signing the line below, I am acknowledging that all pages of this Addendum #11 have been received, reviewed and understood, and will be incorporated into the Proposal submitted. This document must be attached to the Proposal for consideration.*

\_\_\_\_\_  
Print Name (Above)

\_\_\_\_\_  
Signature (Above)

\_\_\_\_\_  
Date (Above)

Number of pages received: \_\_\_\_\_ <fill in>

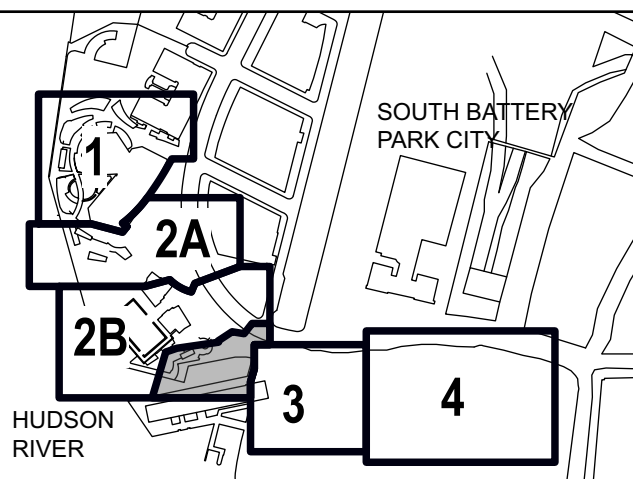
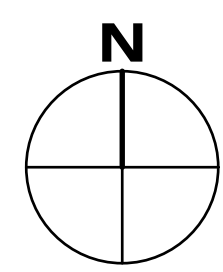
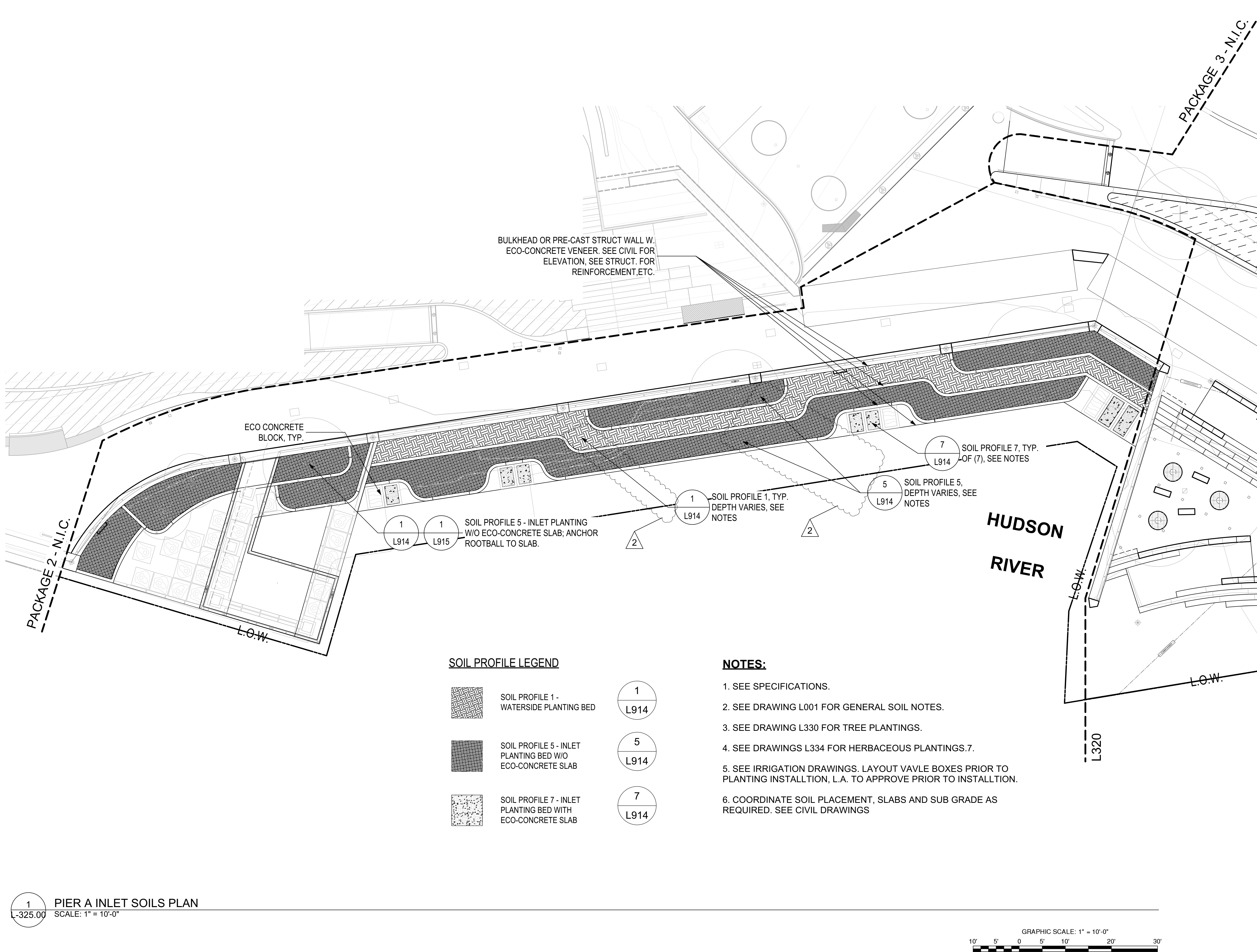
*Distributed to: All prospective Proposers*

*[NO FURTHER TEXT ON THIS PAGE]*

**ATTACHMENT #1**  
**REVISED LANDSCAPE DRAWINGS**  
*L325: Pier A Inlet Soil Plan*  
*L344: Elevations – Pier A Bikeway Wall*  
*L950: Details – Pier A Stair Sections*  
*L951: Details – Pier A Seat Wall Sections*

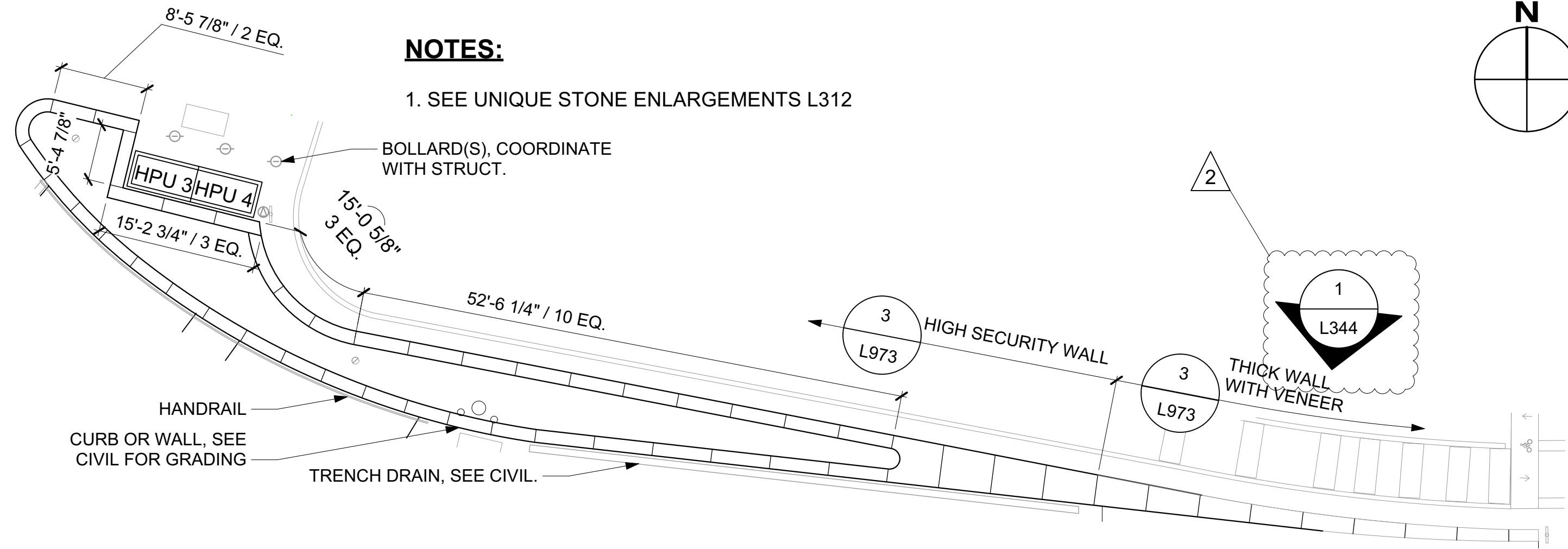
(ATTACHED)



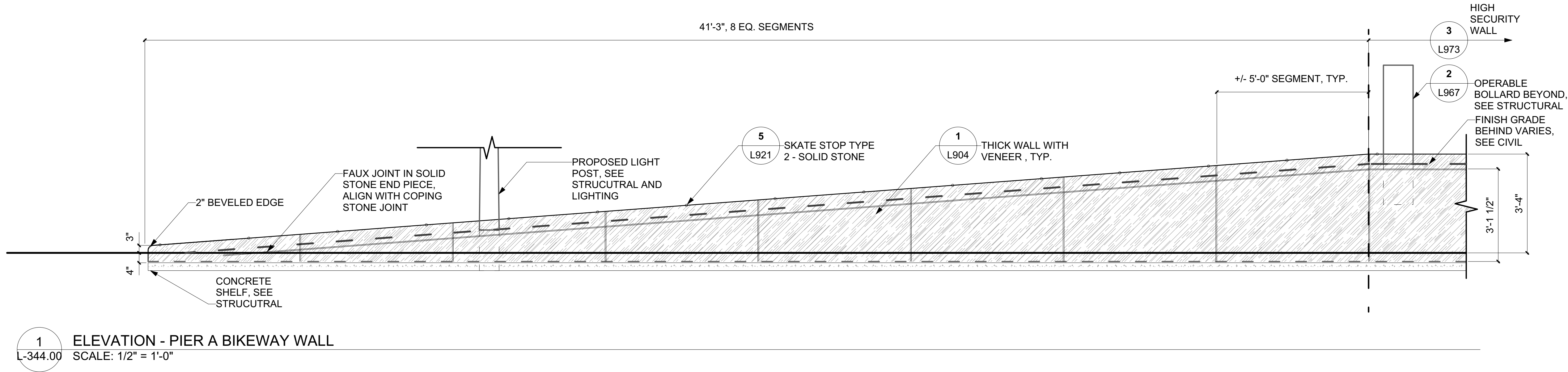


NO.	DATE	DESCRIPTION
2	2023-02-10	ADDENDUM REVISION 2
1	2023-01-25	ADDENDUM REVISION 1
I	2022-11-11	BID SET
I/R	DATE	DESCRIPTION





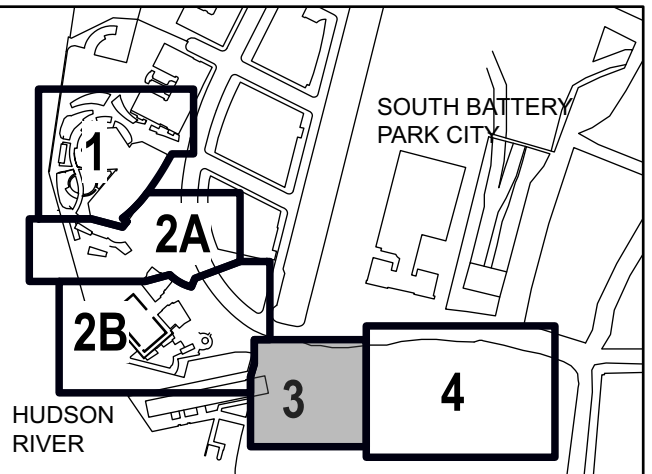
KEY PLAN - PIER A BIKEWAY WALL  
SCALE: 1" = 10'-0"



PROJECT  
SOUTH BATTERY PARK CITY  
RESILIENCY DESIGN  
SERVICES  
CLIENT  
HUGH L. CAREY  
BATTERY PARK CITY AUTHORITY  
CONSULTANT

**AECOM**  
AECOM USA  
605 3rd Ave, 2nd Floor, New York, NY 10158  
212.973.2900 tel www.aecom.com  
**SUB-CONSULTANT**  
MAGNUSSON KLEMENCIC ASSOCIATES  
1301 Fifth Avenue, Suite 3200, Seattle, WA 98101-2699  
206.292.1200 tel 206.292.1201 fax www.mka.com  
SITE WORKS  
150 West 28th St., Suite 605  
New York, NY 10001 212.255.8350 siteworkscm.com  
MILHOUSE  
333 South Wabash Ave., Suite 2901  
Chicago, IL 60604 313.987.0061 milhouseinc.com  
TILLOTSON DESIGN ASSOCIATES  
40 Worth St., Rm 705, New York, NY 10013  
212.675.7760 tillotsondesign.com  
THOMAS PHIFER AND PARTNERS  
180 Varick St., New York, NY 10014  
212.337.0334 thomaspghifer.com  
NAIK CONSULTING GROUP, PC  
111 West 33rd St., Suite 605 New York, NY 10120  
212.576.2701 naikgroup.com  
OWEIS  
100 East Hanover Ave., Suite 101, Cedar Knolls, NJ 07927  
973.539.440 oweisengineering.com

KEY PLAN



REGISTRATION

NYC DOB JOB NUMBER

ISSUE/REVISION

NO.	DATE	DESCRIPTION
2	2023-02-10	ADDENDUM REVISION 2
1	2023-01-25	ADDENDUM REVISION 1
I	2022-11-11	BID SET
I/R	DATE	DESCRIPTION

PROJECT/TERM CONTRACT NUMBER

Contract No. 18-2586

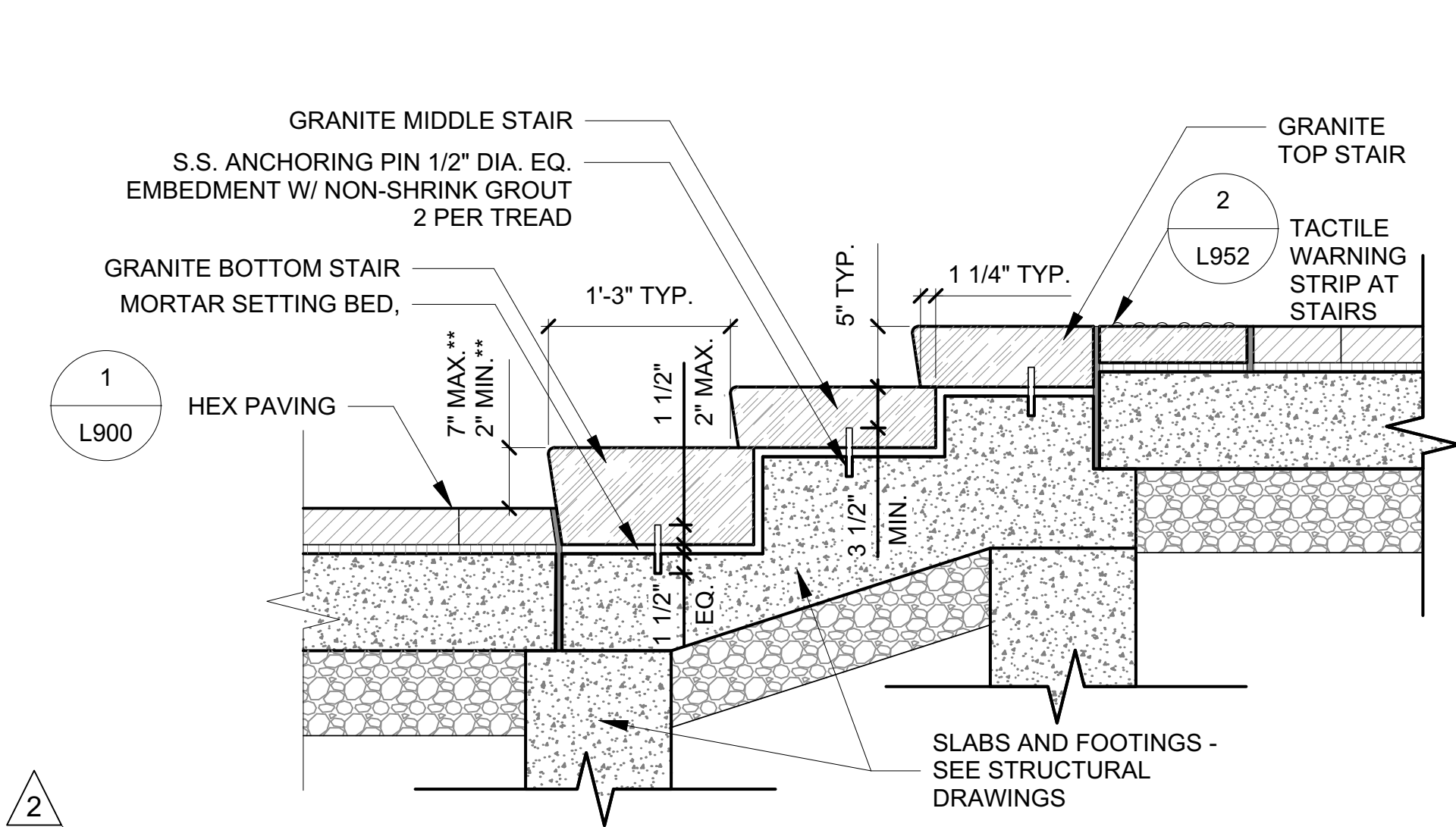
SHEET TITLE

ELEVATIONS - PIER A  
BIKEWAY WALL

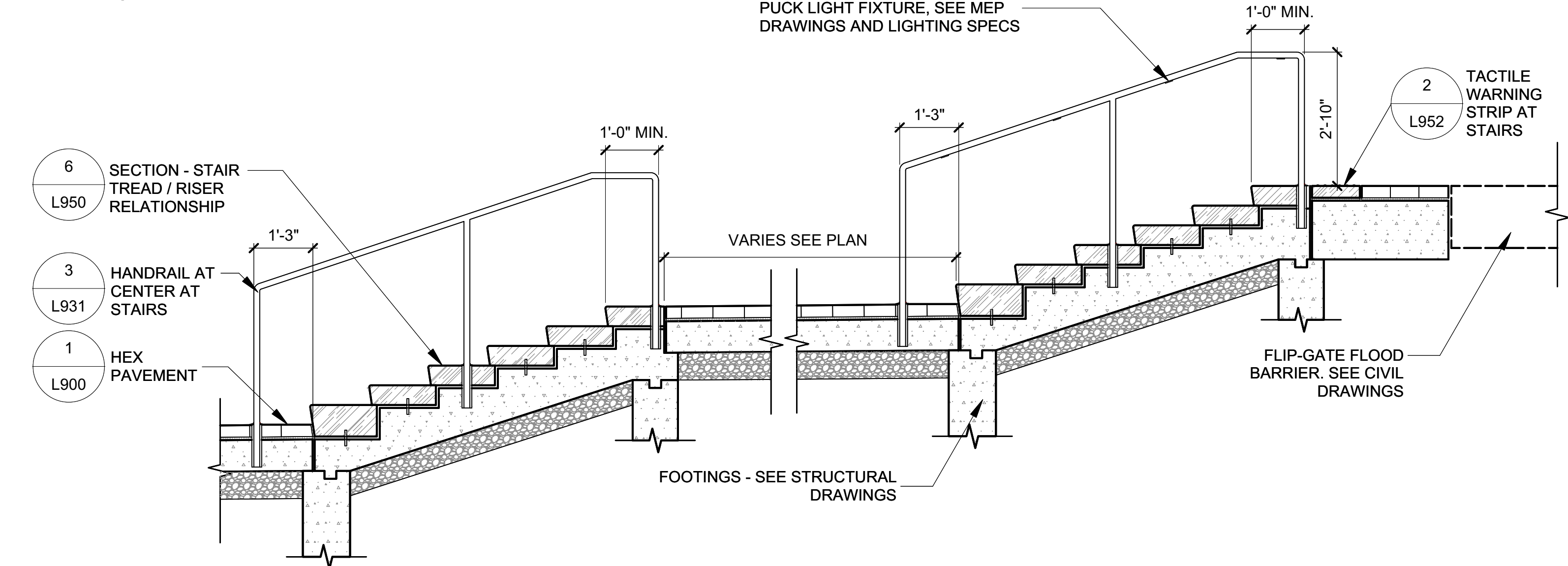
SHEET NUMBER

L-344.00

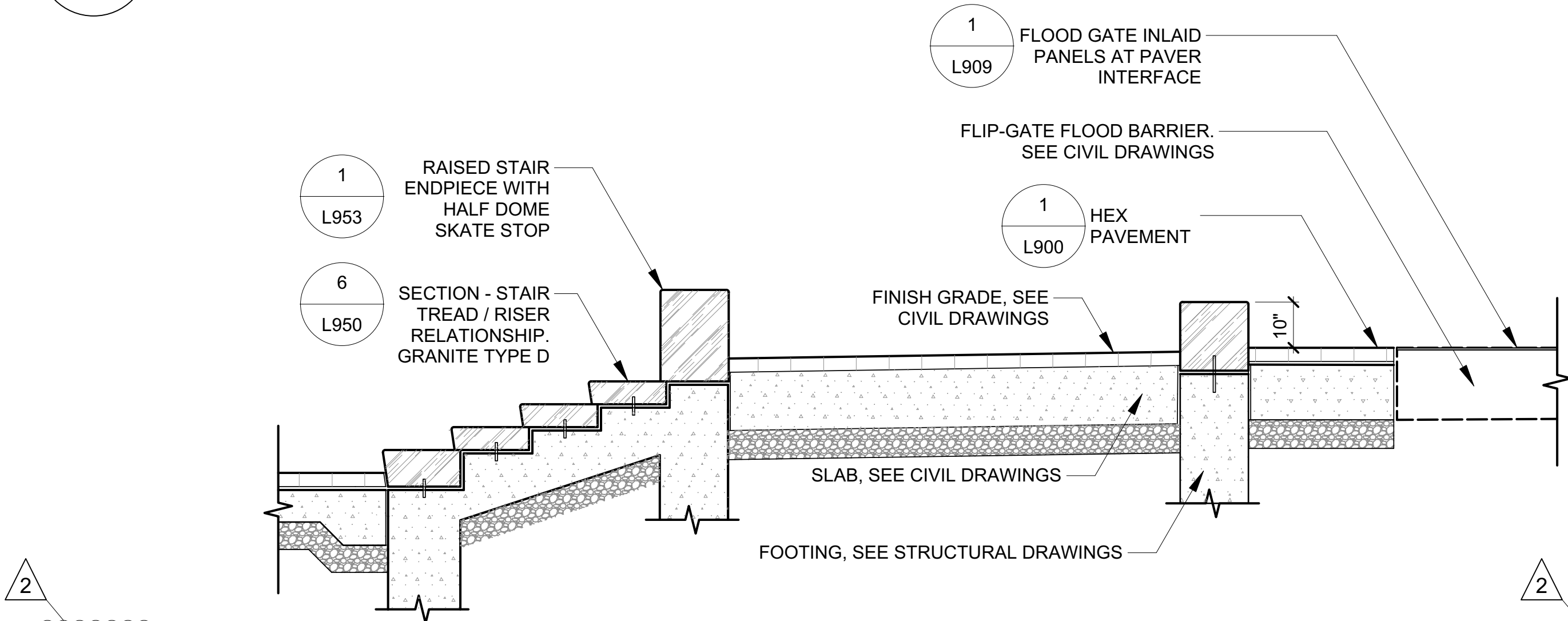




**6**  
L-950.00  
**SECTION - STAIR TREAD / RISER RELATIONSHIP**  
Scale: 1" = 1'-0"



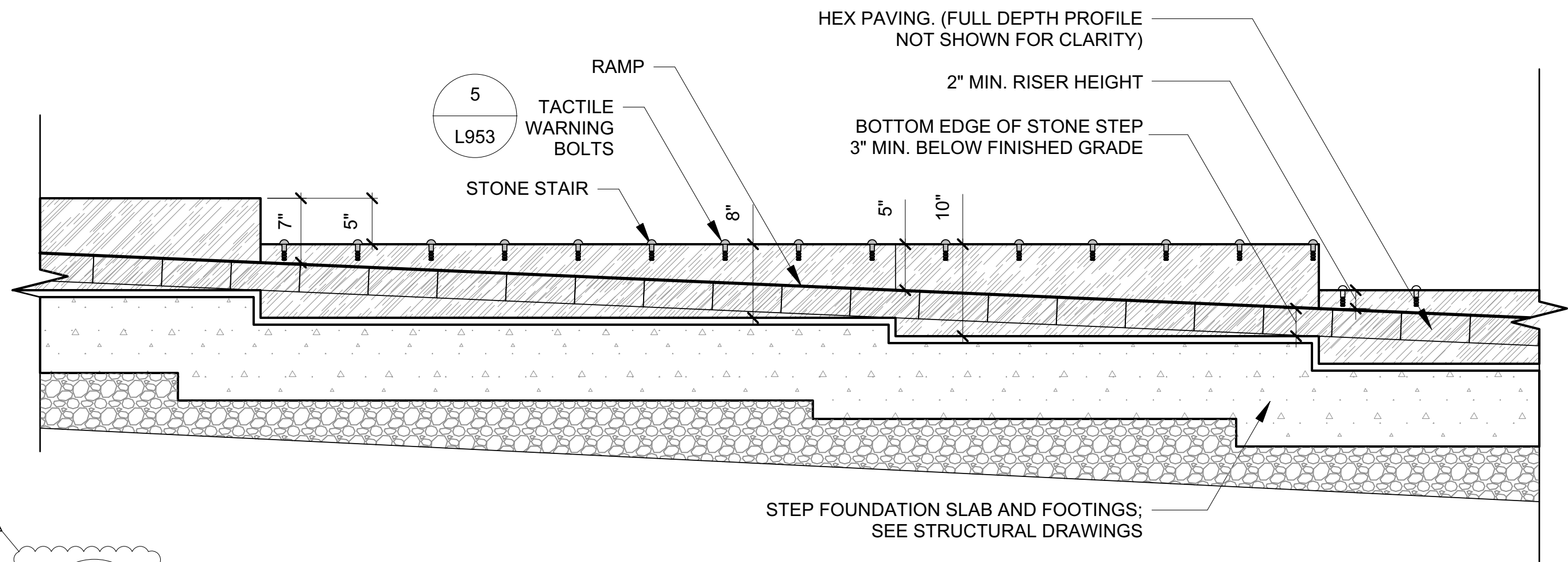
**5**  
L-950.00  
**SECTION - PIER A PLAZA - STONE STEPS**  
Scale: 1/2" = 1'-0"



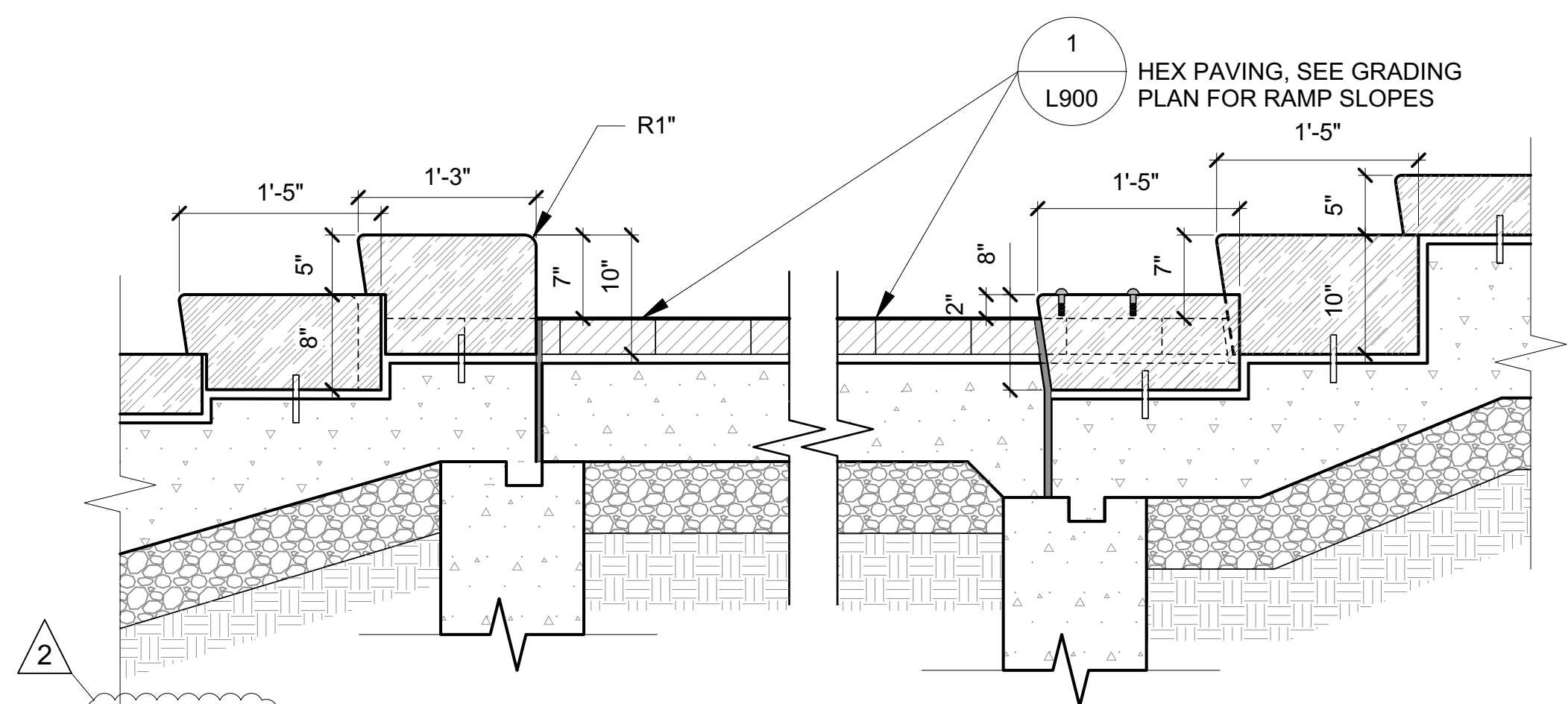
**4**  
L-950.00  
**SECTION - STONE STAIR AT END OF RAMPS**  
Scale: 1/2" = 1'-0"

**NOTES:**

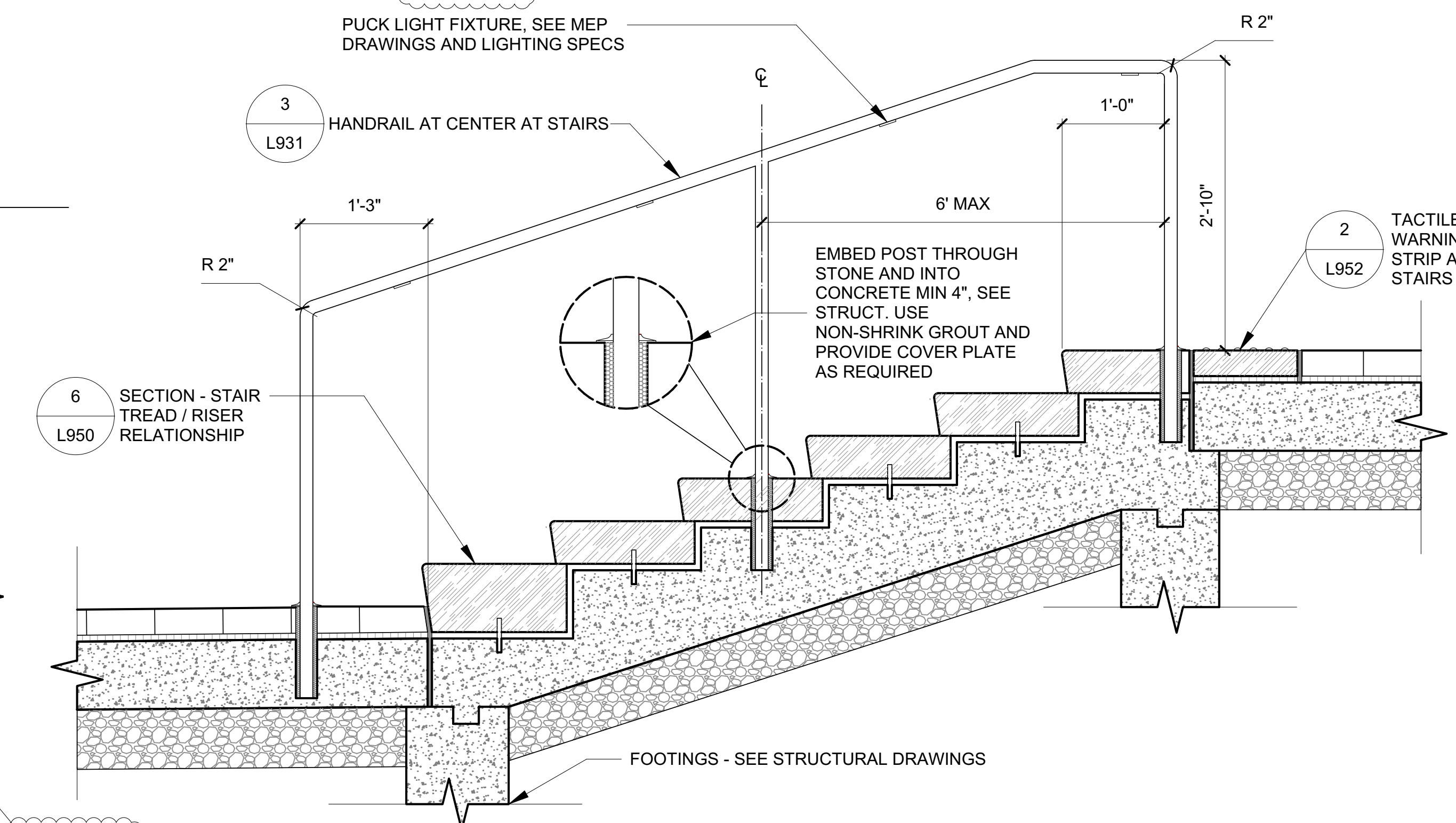
1. FOR LOCATION OF SPECIFIC RISER HEIGHTS SEE CIVIL GRADING PLAN AND DETAILS.
2. SEE 2/L950 - SECTION - STONE STAIR INTERSECTING RAMPS  
3/L950 - ELEVATION - STONE STAIR INTERSECTING RAMPS
3. SEE MATERIAL PLAN FOR STONE TYPE, FINISH, ETC.
4. COORDINATE STAIR TREAD ANCHORING PINS WITH STONE FABRICATOR SHOP DRAWINGS PROVIDED PRIOR TO CONCRETE BASE INSTALLATION. PROVIDE (2) 3" 1/2" S.S. PINS WITH EQ EMBEDMENT W/ NON-SHRINK GROUT.
5. FOR CONCRETE FOOTING AND SLAB CONNECTIONS COORDINATE WITH CIVIL AND STRUCT. DWGS.



**3**  
L-950.00  
**ELEVATION - STONE STAIR INTERSECTING RAMPS**  
Scale: 1" = 1'-0"



**2**  
L-950.00  
**SECTION - STONE STAIR INTERSECTING RAMPS**  
Scale: 1" = 1'-0"



**1**  
L-950.00  
**STAIR WITH RAILING**  
Scale: 1" = 1'-0"

**PROJECT**

**SOUTH BATTERY PARK CITY  
RESILIENCY DESIGN  
SERVICES**

**CLIENT**

**HUGH L. CAREY  
BATTERY PARK CITY AUTHORITY**

**CONSULTANT**

**AECOM**

AECOM USA  
605 3rd Ave, 2nd Floor, New York, NY 10158  
212.973.2900 tel www.aecom.com

**SUB-CONSULTANT**

MAGNUSON KLEMENCIC ASSOCIATES  
1301 Fifth Avenue, Suite 3200, Seattle, WA 98101-2699  
206.292.1200 tel 206.292.1201 fax www.mka.com

SITE WORKS  
150 West 28th St, Suite 605  
New York, NY 10001 212.255.8350 siteworkscm.com

MILHOUSE  
333 South Wabash Ave, Suite 2901,  
Chicago, IL 60604 313.387.0061 milhouseinc.com

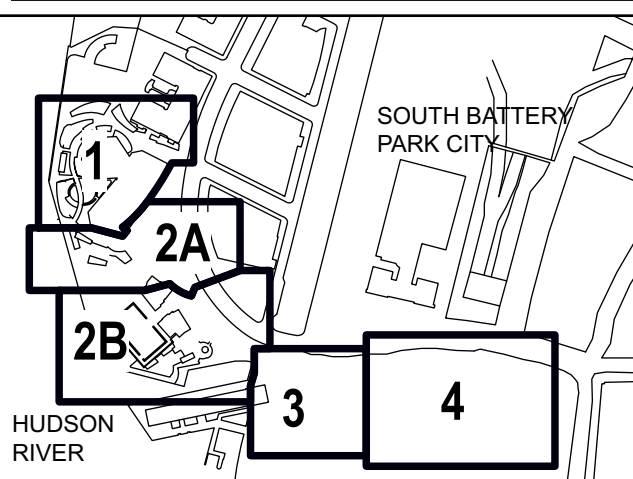
TILLOTSON DESIGN ASSOCIATES  
40 North St, Rm 705, New York, NY 10013  
212.675.7760 tillotsondesign.com

THOMAS PHIFER AND PARTNERS  
180 Varick St, New York, NY 10014  
212.337.0334 thomasphefer.com

NAIK CONSULTING GROUP, PC  
111 West 33rd St., Suite 605 New York, NY 10120  
212.576.2701 naikgroup.com

OWEIS  
100 East Hanover Ave., Suite 101, Cedar Knolls, NJ 07927  
973.539.440 oweisengineering.com

**KEY PLAN**



**REGISTRATION**

**NYC DOB JOB NUMBER**

**ISSUE/REVISION**

I/R	DATE	DESCRIPTION
2	2023-02-10	ADDENDUM REVISION 2
1	2023-01-25	ADDENDUM REVISION 1
1	2022-11-11	BID SET
I/R	DATE	DESCRIPTION

**PROJECT/TERM CONTRACT NUMBER**

Contract No. 18-2586

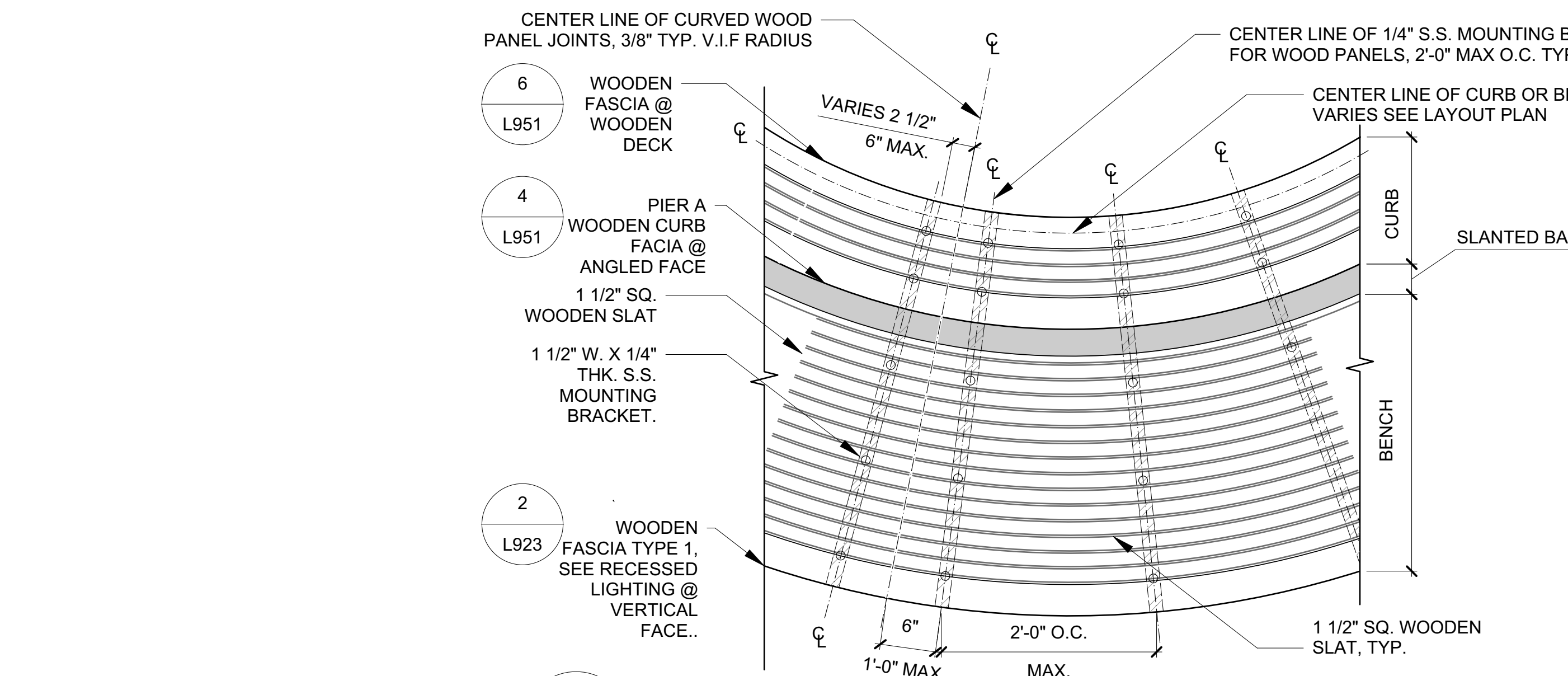
**SHEET TITLE**

**DETAILS - PIER A STAIR  
SECTIONS**

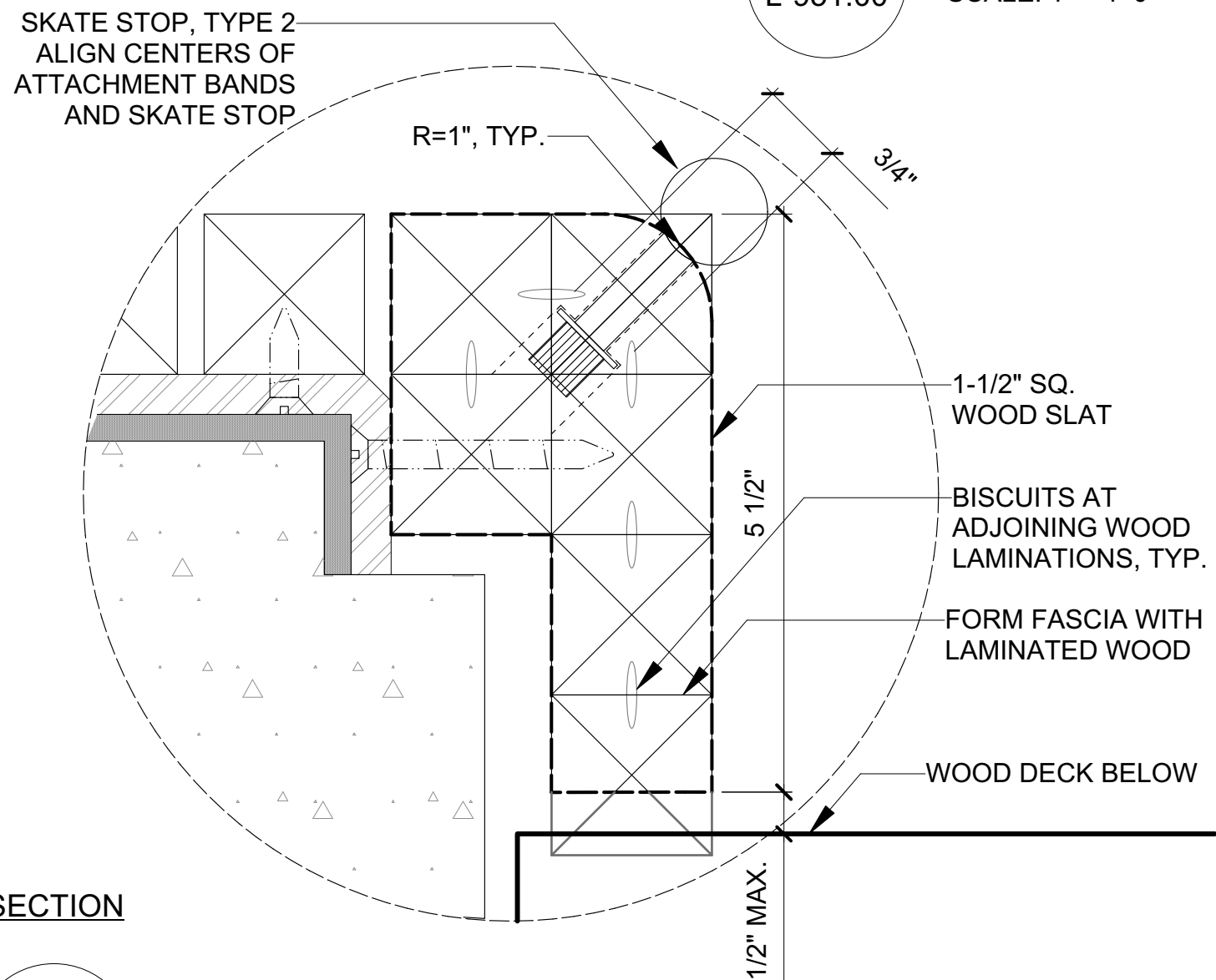
**SHEET NUMBER**

**L-950.00**



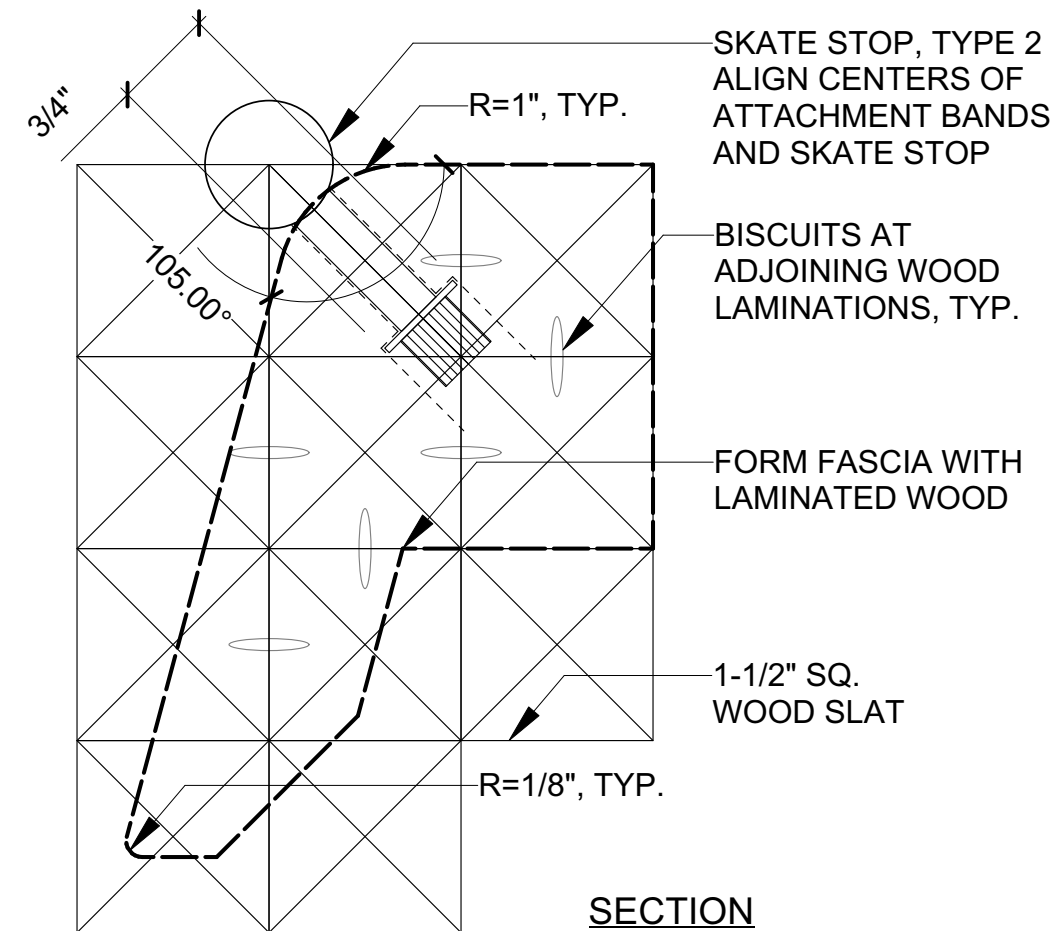


7 WOODEN CURB FACIA @ WOODEN DECK  
SCALE: 1" = 1'-0"



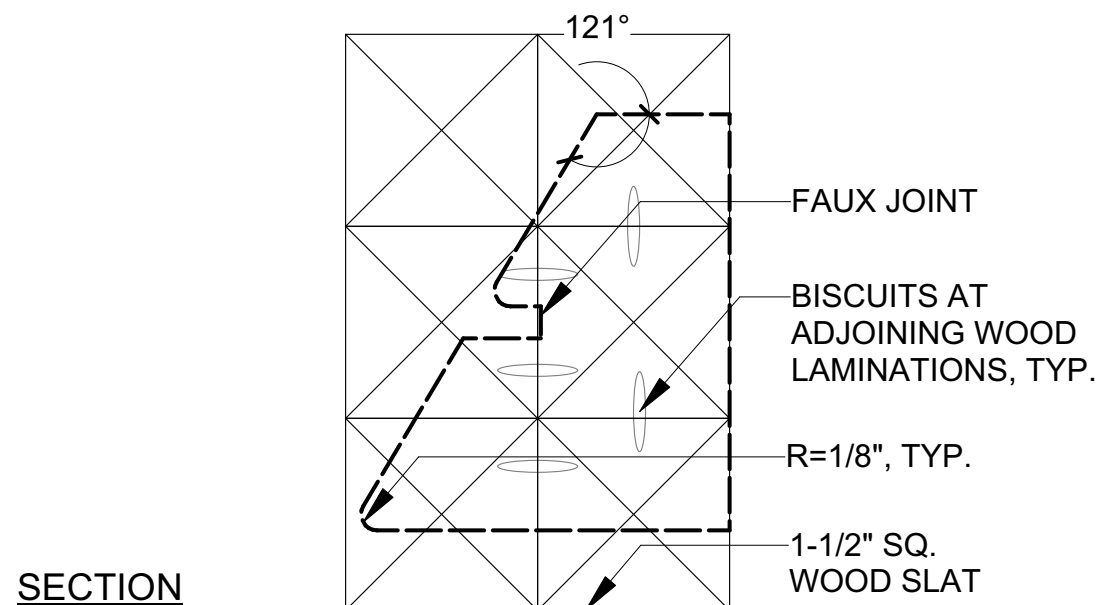
SECTION

6 WOODEN CURB FACIA @ WOODEN DECK  
SCALE: 1" = 1'-0"



SECTION

4 WOODEN CURB FACIA @ ANGLED FACE  
SCALE: 1" = 1'-0"



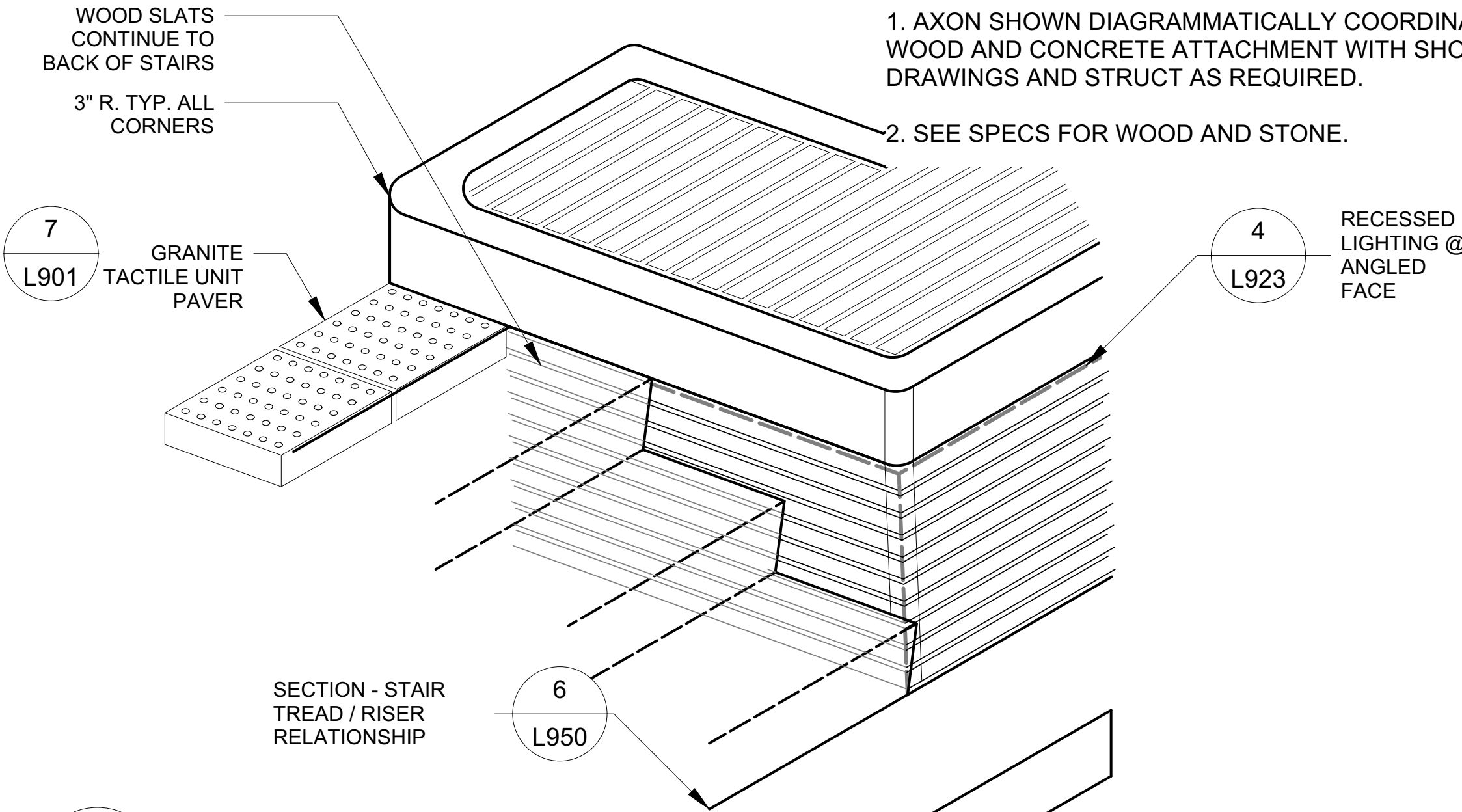
SECTION

5 PIER A WOODEN LOWER LIGHTING RECESS ELEMENT  
SCALE: 1" = 1'-0"

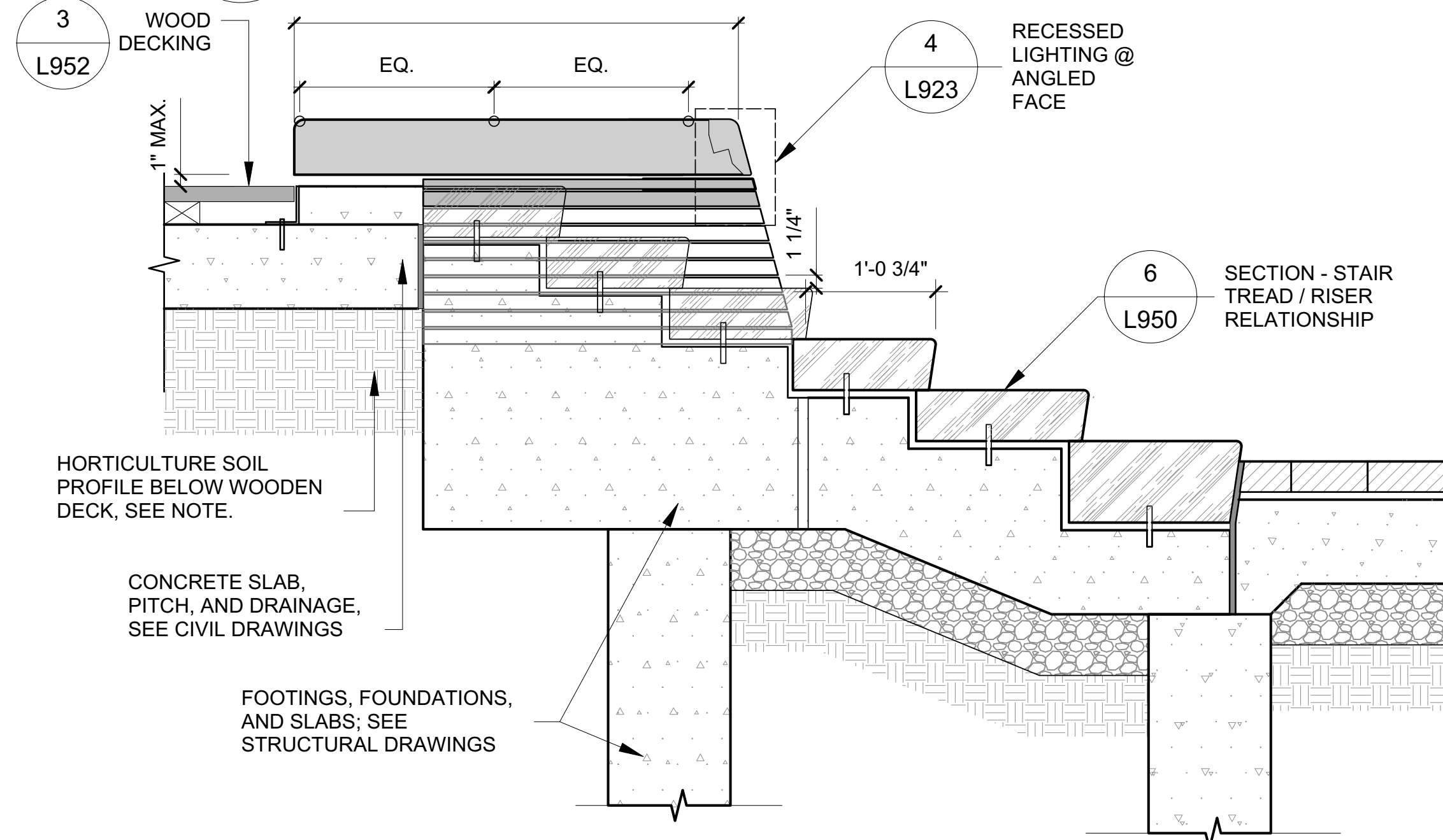
NOTES:

1. AXON SHOWN DIAGRAMMATICALLY COORDINATE WOOD AND CONCRETE ATTACHMENT WITH SHOP DRAWINGS AND STRUCT AS REQUIRED.

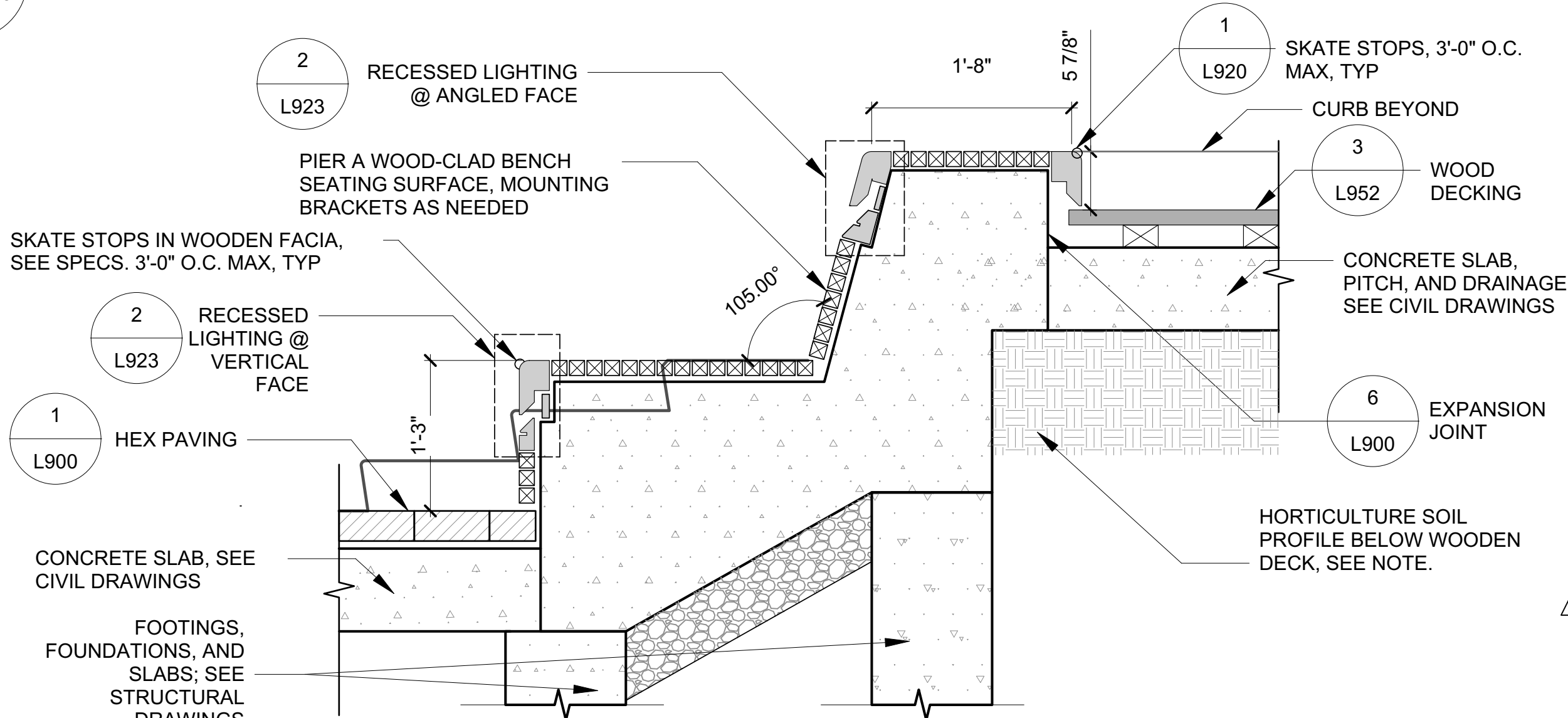
2. SEE SPECS FOR WOOD AND STONE.



2 AXON - PIER A WOOD-CLAD SEATING CURB  
SCALE: 1" = 1'-0"



1 ELEVATION - PIER A WOOD-CLAD SEATING CURB AND STAIRS  
SCALE: 1" = 1'-0"



3 SECTION - PIER A WOOD-CLAD SEATING CURB AND BENCH  
SCALE: 1" = 1'-0"

PROJECT

SOUTH BATTERY PARK CITY  
RESILIENCY DESIGN  
SERVICES

CLIENT

HUGH L. CAREY  
BATTERY PARK CITY AUTHORITY

CONSULTANT

AECOM

AECOM USA  
605 3rd Ave, 2nd Floor, New York, NY 10158  
212.973.2900 tel www.aecom.com

SUB-CONSULTANT

MAGNUSON KLEMENCIC ASSOCIATES  
1301 Fifth Avenue, Suite 3200, Seattle, WA 98101-2699  
206.292.1200 tel 206.292.1201 fax www.mka.com

SITE WORKS  
150 West 28th St., Suite 605  
New York, NY 10001 212.255.8350 siteworkscm.com

MILHOUSE  
333 South Wabash Ave, Suite 2901,  
Chicago, IL 60604 313.987.0961 milhouseinc.com

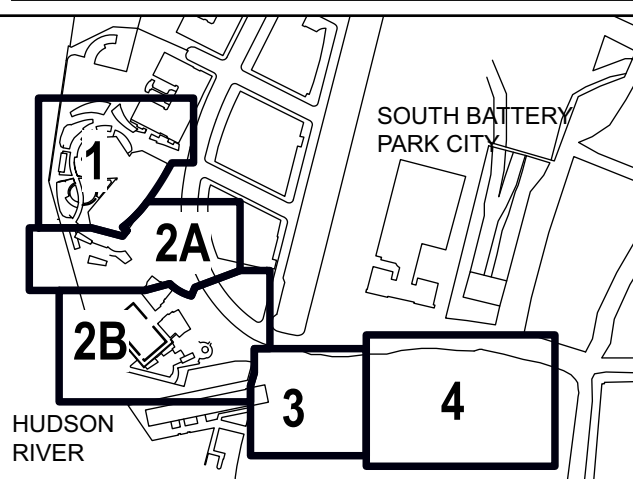
TILLOTSON DESIGN ASSOCIATES  
40 North St., Rm 705, New York, NY 10013  
212.675.7760 tillotsondesign.com

THOMAS PHIFER AND PARTNERS  
180 Varick St., New York, NY 10014  
212.337.0334 thomaspifer.com

NAIK CONSULTING GROUP, PC  
111 West 33rd St., Suite 605 New York, NY 10120  
212.576.2701 naikgroup.com

OWEIS  
100 East Hanover Ave., Suite 101, Cedar Knolls, NJ 07927  
973.539.440 oweisengineering.com

KEY PLAN



REGISTRATION

NYC DOB JOB NUMBER

ISSUE/REVISION

NO.	DATE	DESCRIPTION
2	2023-02-10	ADDENDUM REVISION 2
1	2023-01-25	ADDENDUM REVISION 1
1	2022-11-11	BID SET
I/R	DATE	DESCRIPTION

PROJECT/TERM CONTRACT NUMBER

Contract No. 18-2586

SHEET TITLE

DETAILS - PIER A SEAT  
WALL SECTIONS

SHEET NUMBER

L-951.00