

Project: **South Battery Park City
Resiliency Project: Pier A
Plaza / Battery Site Work
And Near Surface Isolation
Construction Services**

Date: **December 19, 2022**

RE: **Addendum #1**
of Pages: **39**

A) The following documents associated with the Request for Proposals (“RFP”) for the South Battery Park City Resiliency Project: Pier A Plaza / Battery Site Work and Near Surface Isolation Construction Services (the “Pier A/Battery and NSI Project”) are hereby attached:

- The presentation shown at the December 16, 2022 pre-proposal meeting (the “Pre-Proposal Meeting”), referred to herein as the “Informational Document” and attached hereto as Attachment #1. Please note that the Informational Document is provided for informational purposes only and does not amend or modify any portion of the RFP in any way. Proposers shall rely on the Construction Documents, as they may be modified by addenda (“Addenda”), for the accurate depiction of the requirements of the Wagner/MJH Project; and,
- The attendee list from the December 16, 2022 Pier A/Battery and NSI Project Site Walkthrough – including the names and contact information of individual attendees as well as the respective names of their firms – is attached hereto as Attachment #2.

B) The following revisions are hereby made to the RFP’s *Section 3.5 – Procurement Schedule*: Interviews held with prospective Proposers will occur on **February 27, 28 and/or March 1, 2023**. Note that all other dates included within the RFP’s Procurement Schedule remain unchanged unless otherwise stated in a future RFP addendum.

By signing the line below, I am acknowledging that all pages of this Addendum #2 have been received, reviewed and understood, and will be incorporated into the Proposal submitted. This document must be attached to the Proposal for consideration.

Print Name

Signature

Date

Number of pages received: _____ *<fill in>*

Distributed to: All prospective Proposers

ATTACHMENT #1
DECEMBER 16, 2022 PRE-PROPOSAL
MEETING PRESENTATION

(ATTACHED)

SOUTH BATTERY PARK CITY RESILIENCY

Package 4: Pier A/The Battery & Near Surface Isolation

December 16, 2022



**Battery Park
City Authority**

Agenda

- Team Introductions
- Project Background/Overview
- Scope of Work and Technical Overview
- Site Logistics
- Work Coordination
- Anticipated Project Schedule & Contract Milestones
- Procurement Schedule
- Q & A information



Team Introductions

Owner: Battery Park City Authority

Design Lead: AECOM

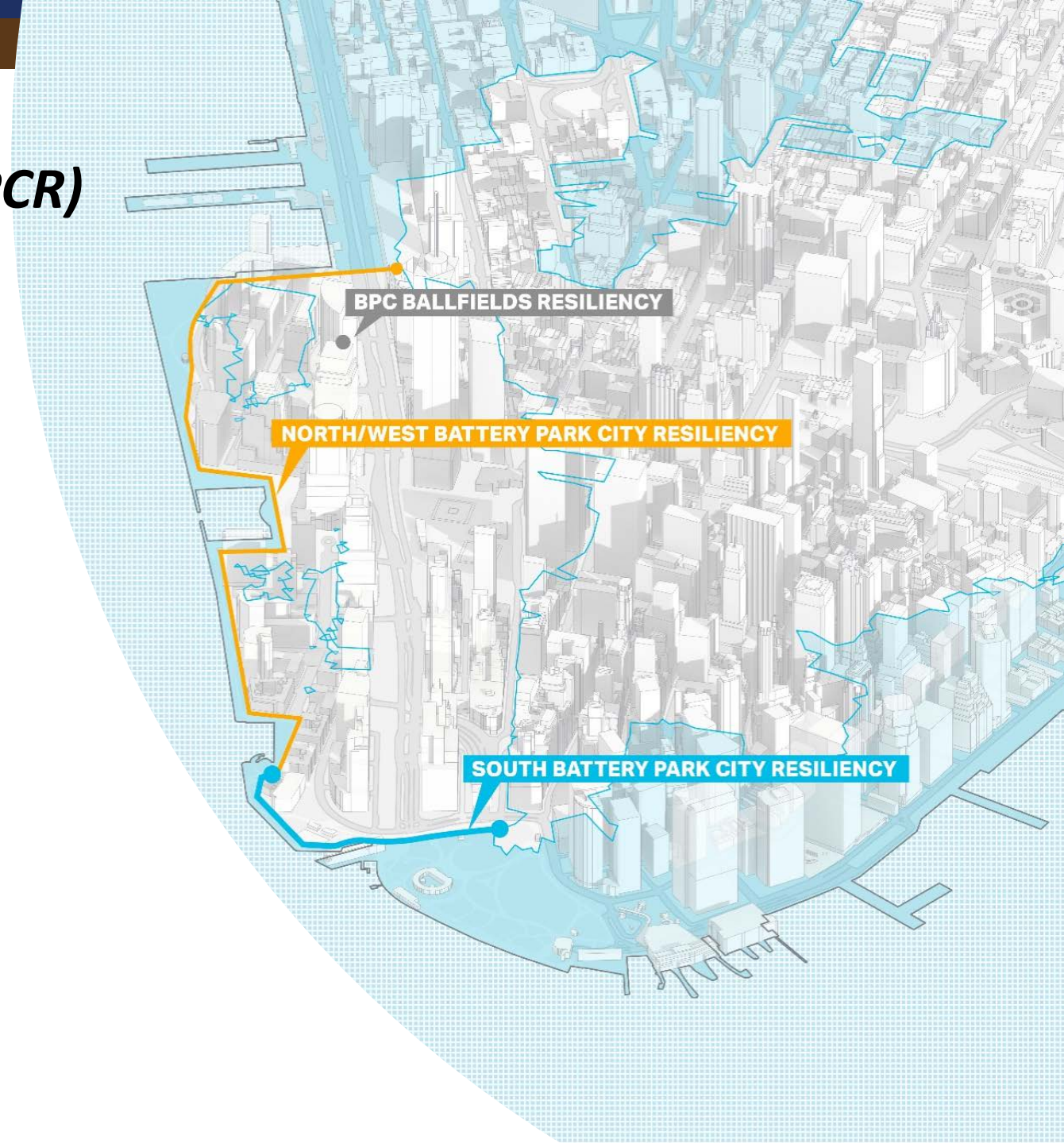
Construction Manager: The LiRo Group



South Battery Park City Resiliency (SBPCR) Project Overview

Lower Manhattan Coastal Resiliency (LMCR)
Project

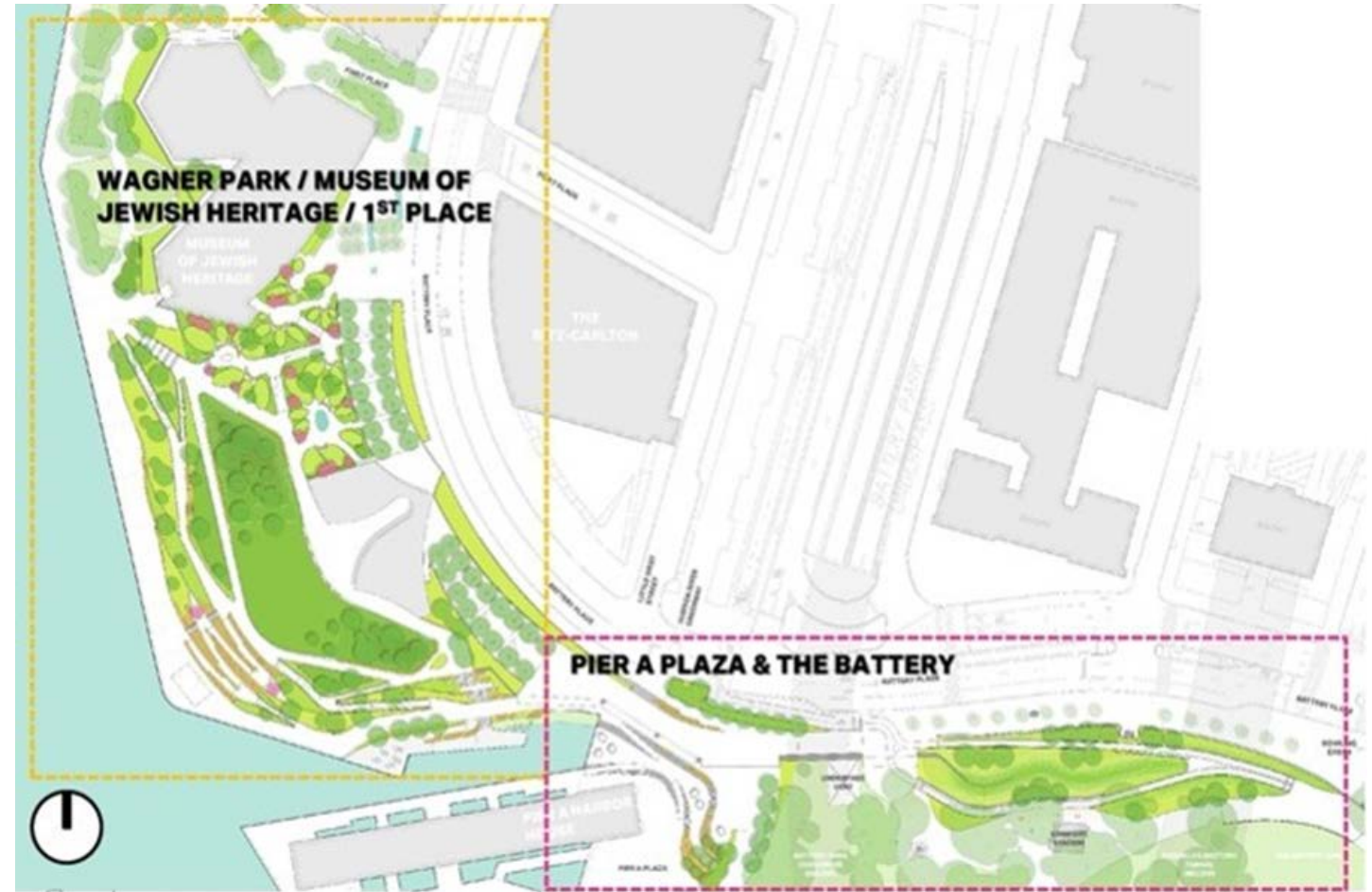
- BPC Ballfields Resiliency
- North/West Battery Park City Resiliency
- **South Battery Park City Resiliency**



SBPCR Project Overview

SBPCR Bid Packages

- Package 2: Wagner Park/MJH Site
- Package 3: Pavilion
- **Package 4: Pier A/Battery and Near Surface Isolation**



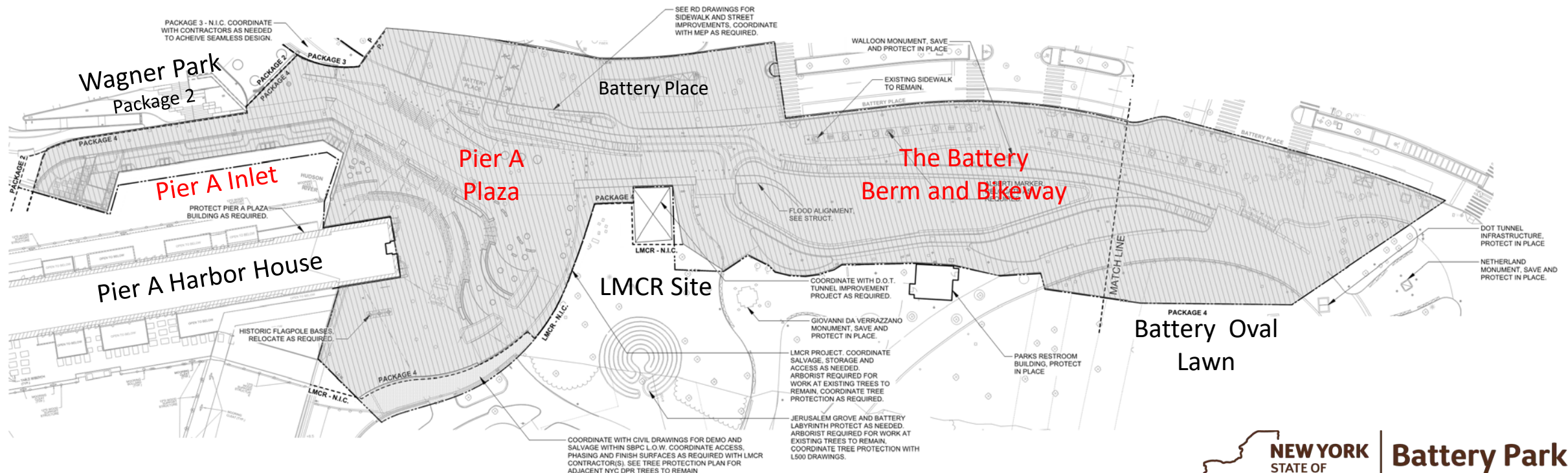
Package 4: Pier A and Battery Overview

Existing Surroundings

- Wagner Park (Package 2)
- Battery Place
- Pier A Harbor House
- LMCR (The Battery) project site
- Battery Oval Lawn

Improvements

- Pier A Inlet
- Pier A Plaza
- The Battery Berm and Bikeway





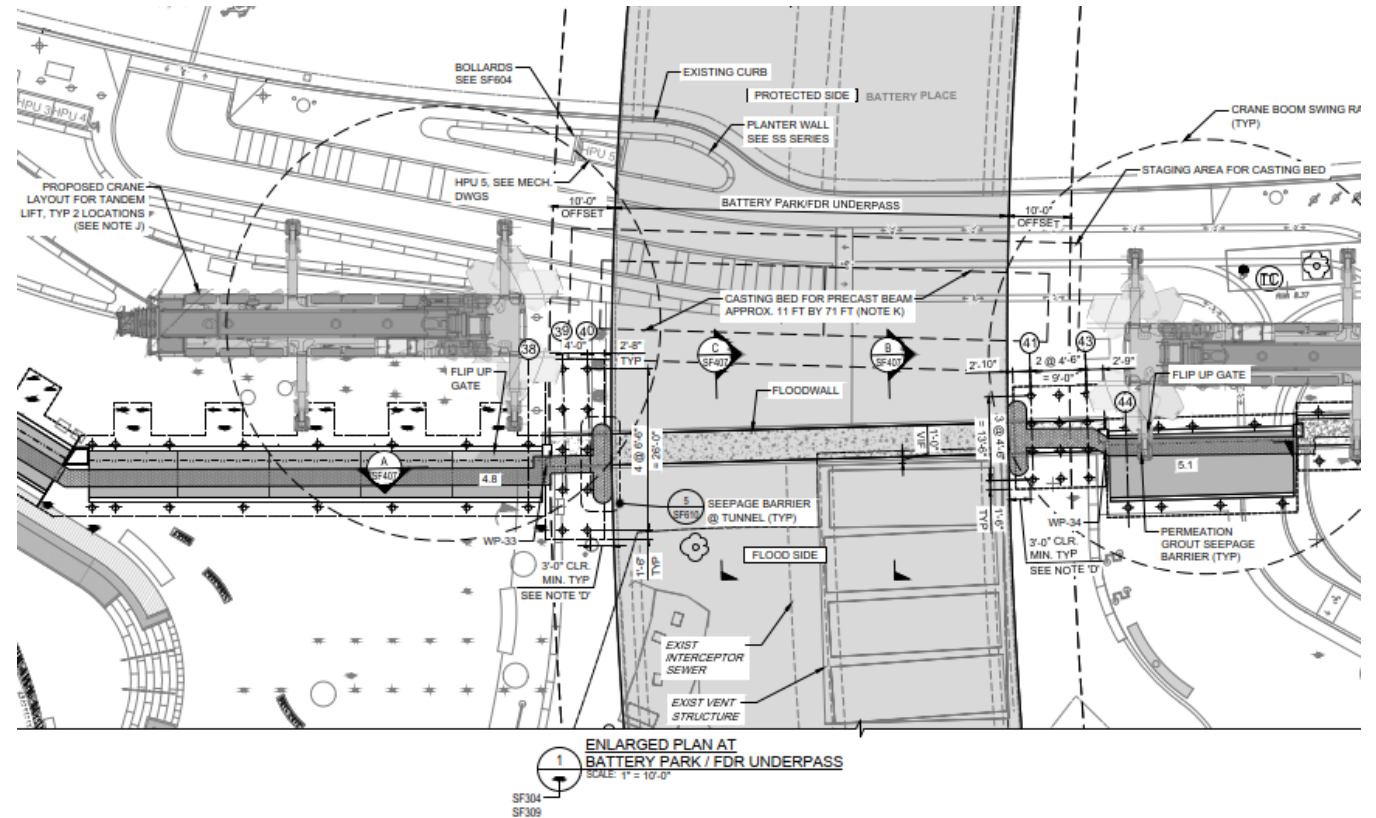
Package 4: Structural Overview



**Battery Park
City Authority**

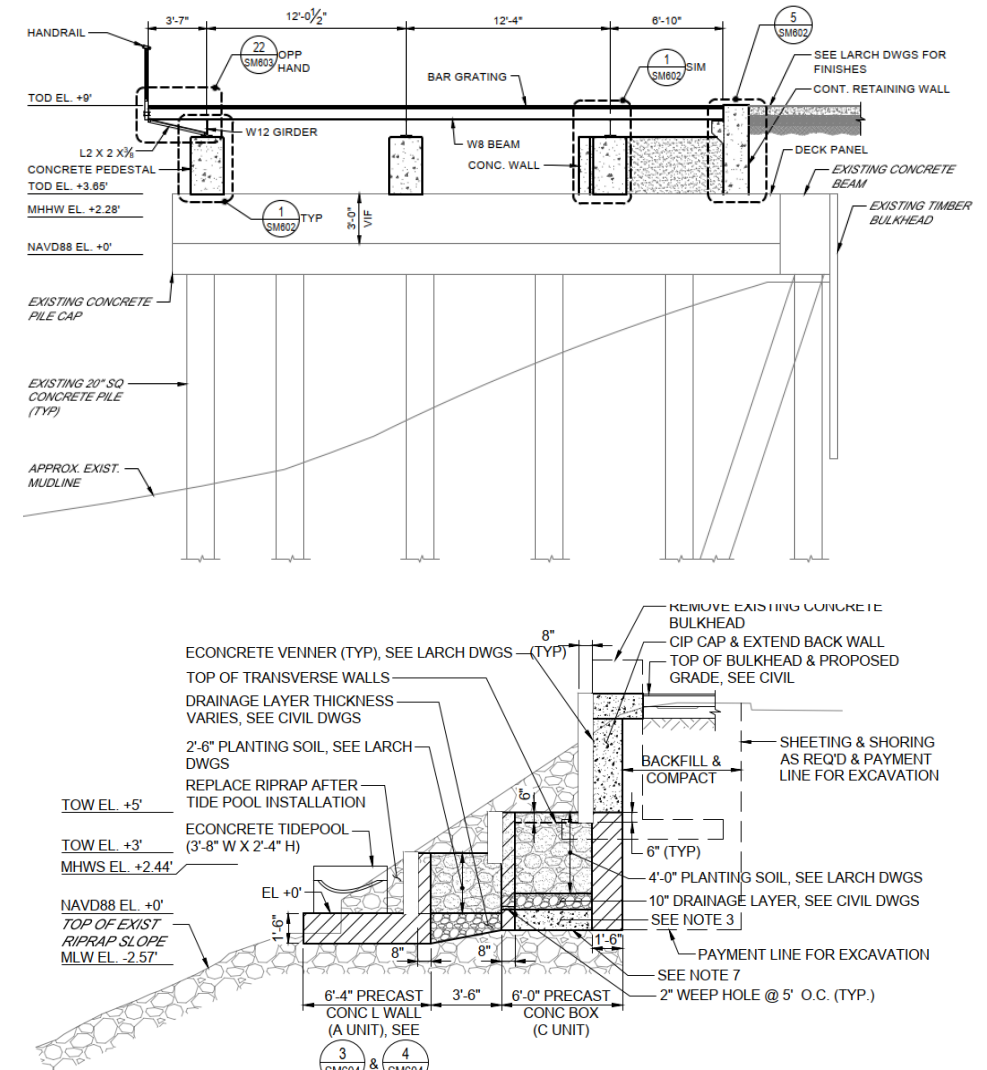
Package 4: Pier A Plaza Structural Overview

- Existing Structural Constraints
 - Battery Park Underpass
 - Shallow top of tunnel
 - Full tunnel closure at night
 - Maintain access at Pier A Plaza



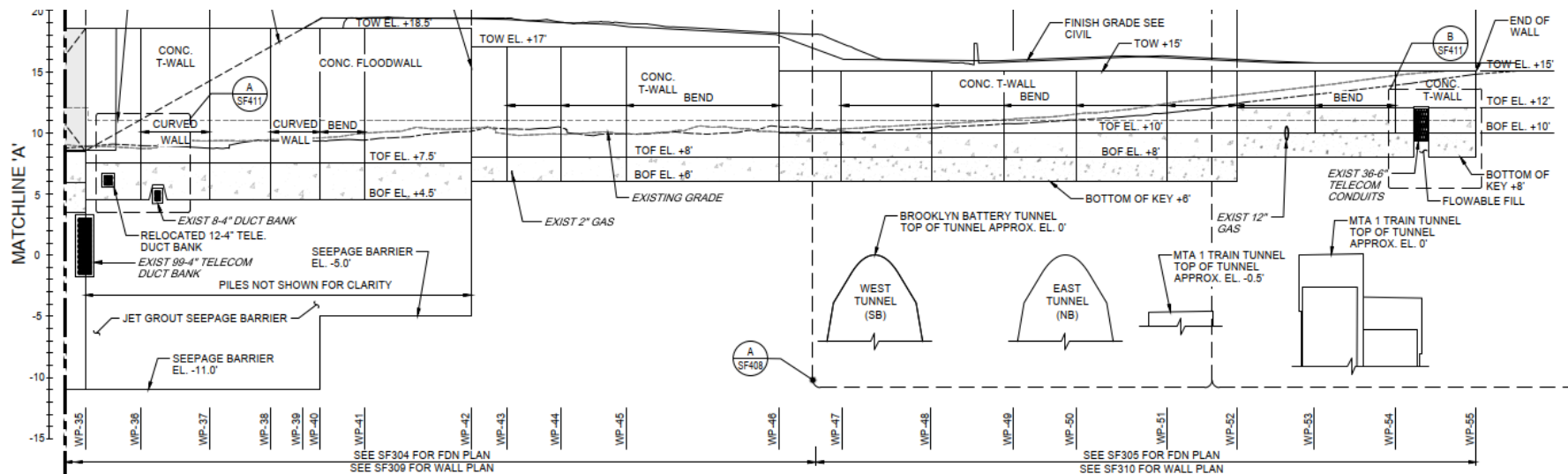
Package 4: Pier A Inlet Structural Overview

- Structural Components
 - Demolition of existing concrete bulkhead
 - Demolition of concrete deck planks and topping slab for section of relieving platform
 - Construction of precast concrete box units and CIP concrete cap
 - Construction of steel platform with concrete pedestal atop existing relieving platform pile caps
- Construction Notes
 - Submit demolition and removal plan including analysis of the structure showing stability during demolition operations
 - Load limit on the relieving platform



Package 4: Battery Structural Overview

- Foundation types
 - Micropiles with CIP concrete pile cap
 - Spread footing with key
- Construction Notes
 - Monitoring for construction impacts in the vicinity of the tunnels, including vibration

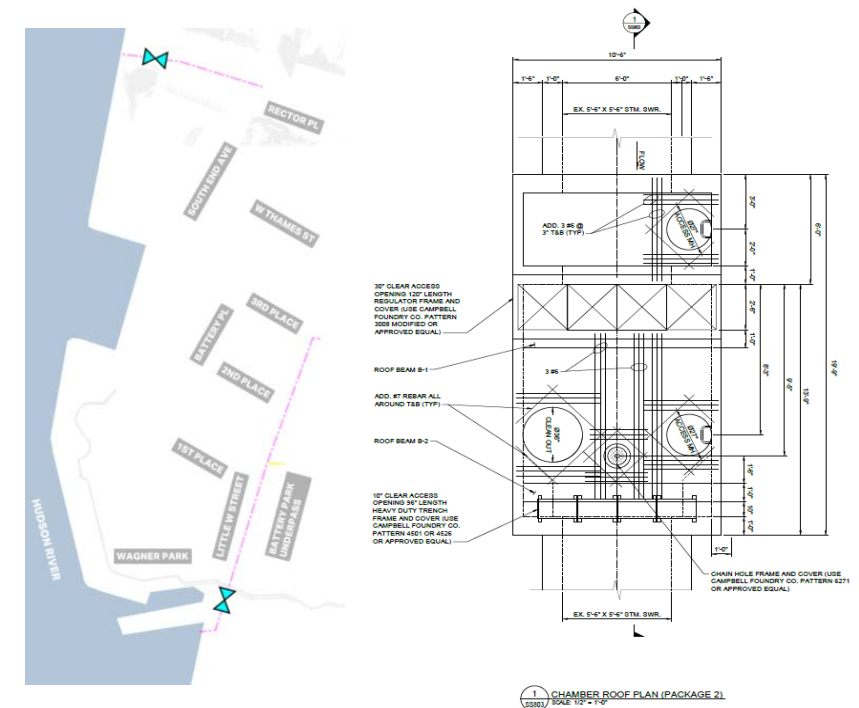




Package 4: Civil & Utilities Overview

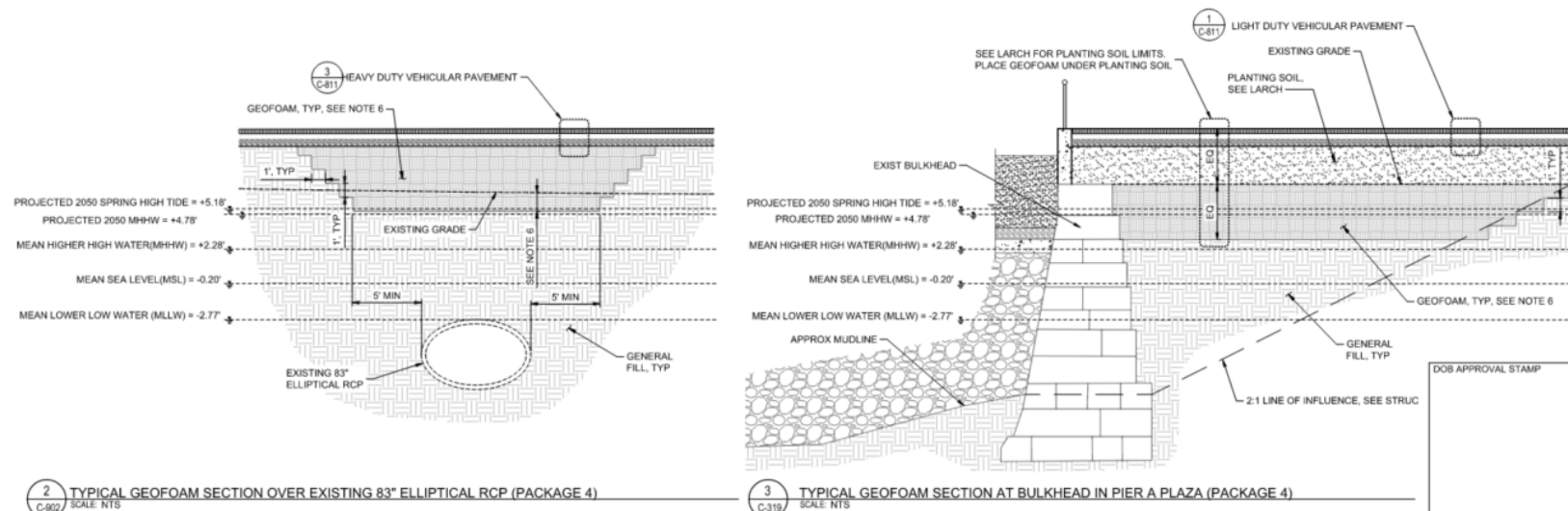
Package 4: Rector Place and Pier A Plaza Tide Gate Overviews

- Tide gate chamber at Rector Place for 54" diameter pipe
- Tide gate chamber at Pier A Plaza for 83" x 53" elliptical pipe
- For both chambers:
 - Micropile foundation
 - CIP concrete construction
 - Sheeting, shoring, and dewatering as required for construction (means and methods)
 - Pipe/chambers under/in water
 - Cofferdams and pipe bladders
 - Maintain/bypass flows in pipes
 - Potential sequence/measures on drawings (but means and methods)



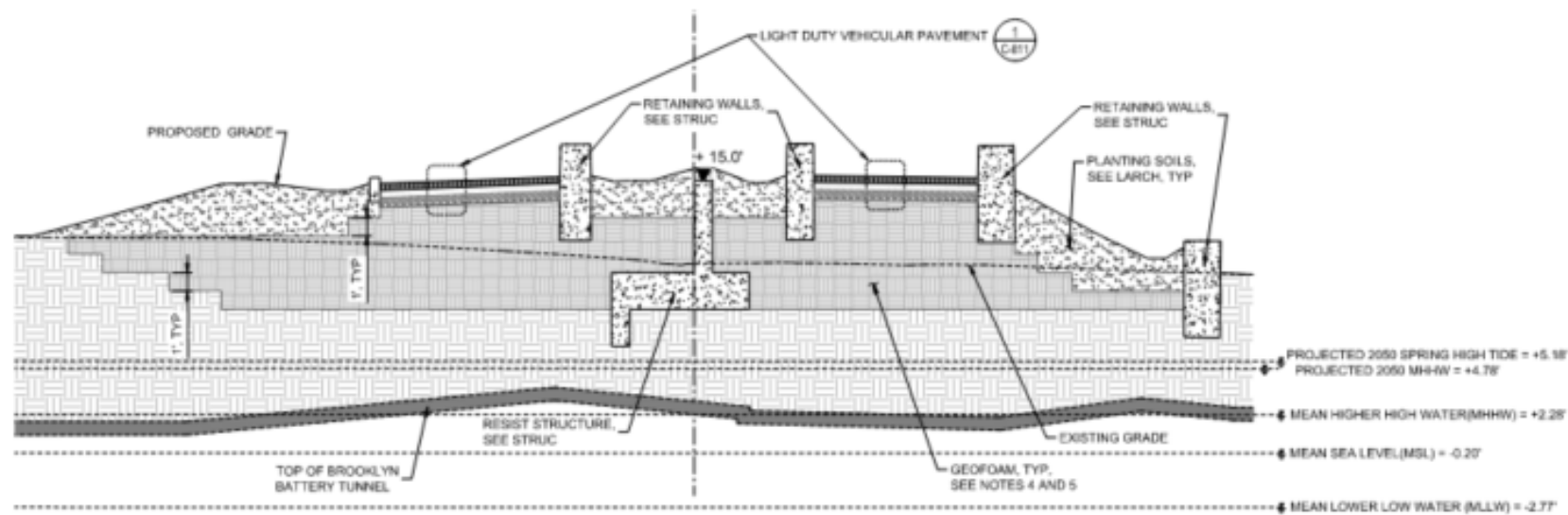
Package 4: Lightweight Fill at Pier A Plaza Overview

- Lightweight fill over 83" x 53" elliptical CSO outlet pipe
 - No net weight increase over existing pipe
- Lightweight fill adjacent to bulkhead wall
 - No net weight increase within line of influence
 - Coordinate with planting soil regarding depth of geofoam



Package 4: Lightweight Fill Over TBTA and MTA Tunnels Overview

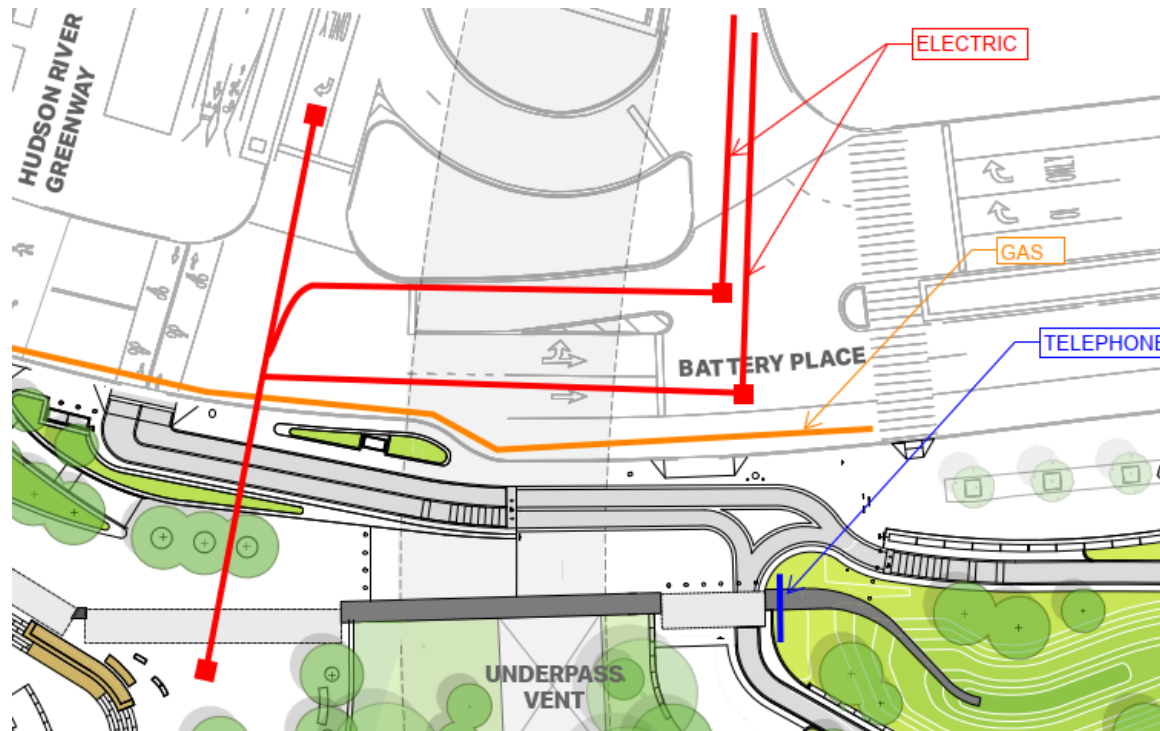
- Lightweight fill over TBTA and MTA Tunnels
 - No net weight increase over existing tunnels



1 SECTION AT TBTA TUNNEL (PACKAGE 4)
C-328 SCALE: NTS

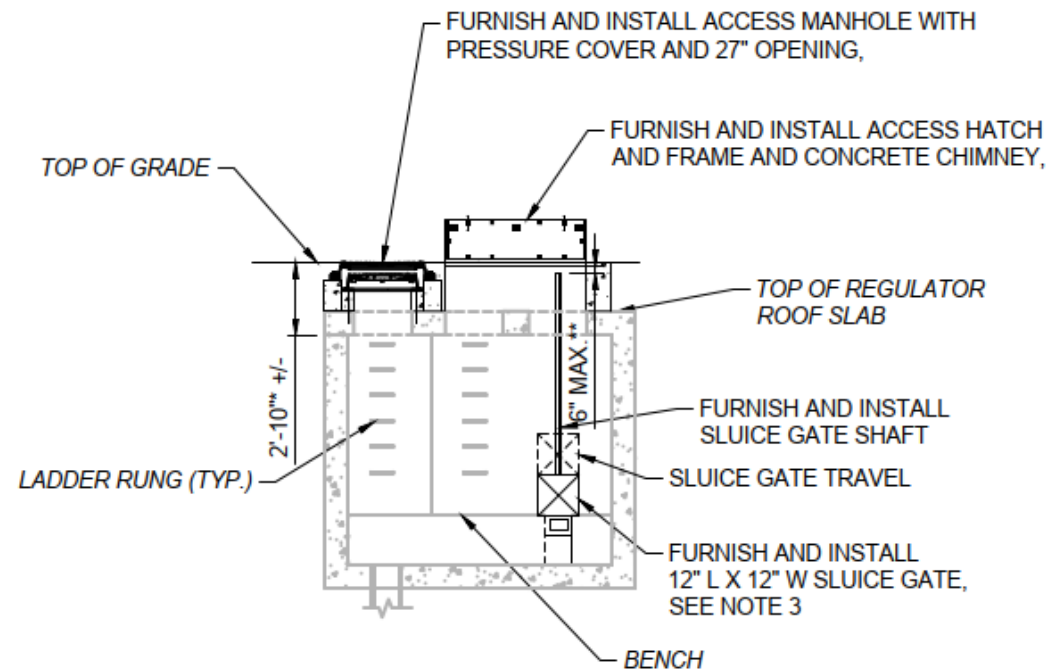
Package 4: Utility Relocation in Battery Place Overview

- Coordination with Utility Agencies for utility relocation:
 - Con Edison (Gas and Electric) – Contractor performing the work needs to be approved by Con Ed
 - Empire City Subway/Verizon (Telephone)



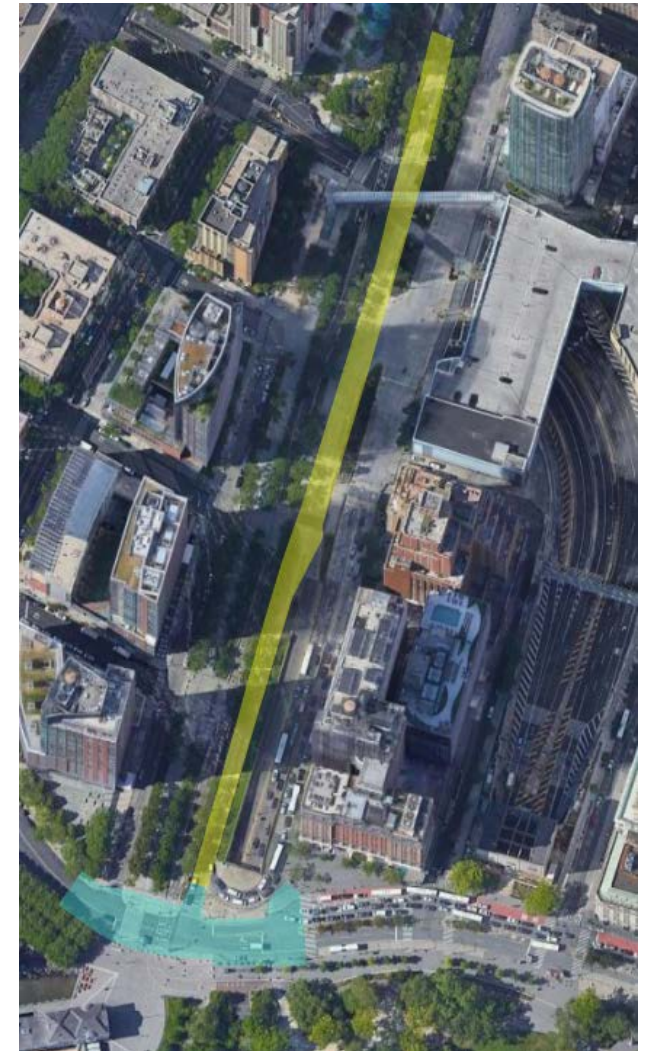
Package 4: Near Surface Isolation (NSI) Overview

- Improvements to NYCDEP Interceptor Sewer Regulators in West Street (SB)
 - Watertight Manhole Cover
 - Watertight Access Hatch
 - Sluice Gate



Package 4: Maintenance and Protection of Traffic Overview

- Battery Place
 - NYCDOT Jurisdiction
 - Access for Pedestrians at all times
 - Maintain one travel lane in each direction on streets
 - Nighttime hours for utility work
- West Street (NSI)
 - NYCDOT/NYSDOT Jurisdiction
 - Only close one travel lane
 - Nighttime hours for all work
- Battery Park Underpass
 - NYCDOT/NYSDOT Jurisdiction
 - Nighttime hours, full closure
 - Detour plans required.





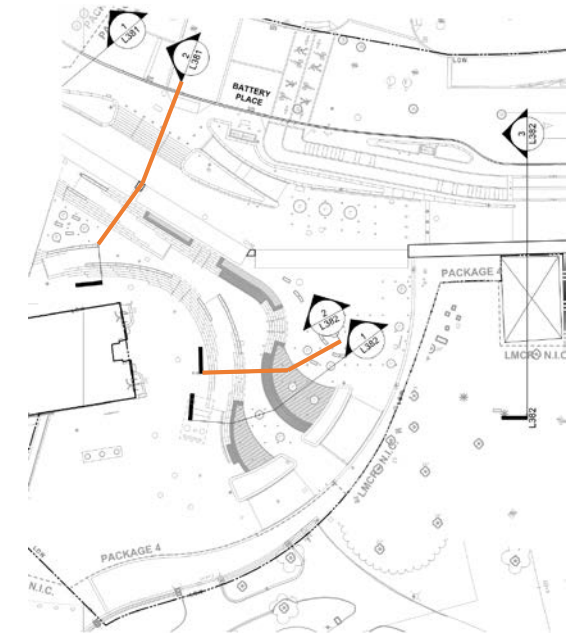
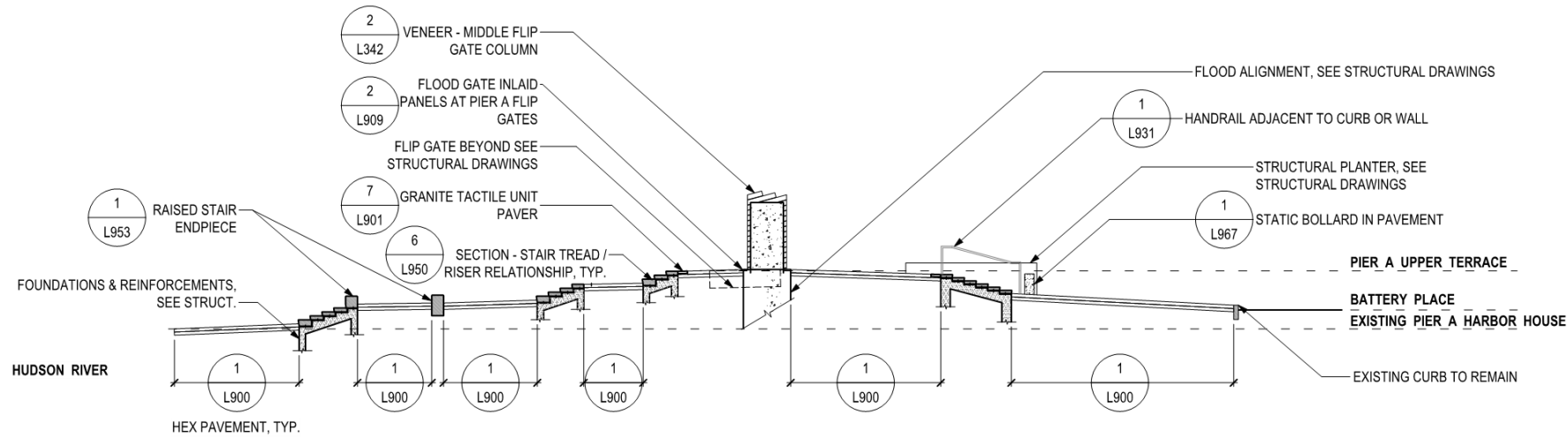
Package 4: Landscape Overview



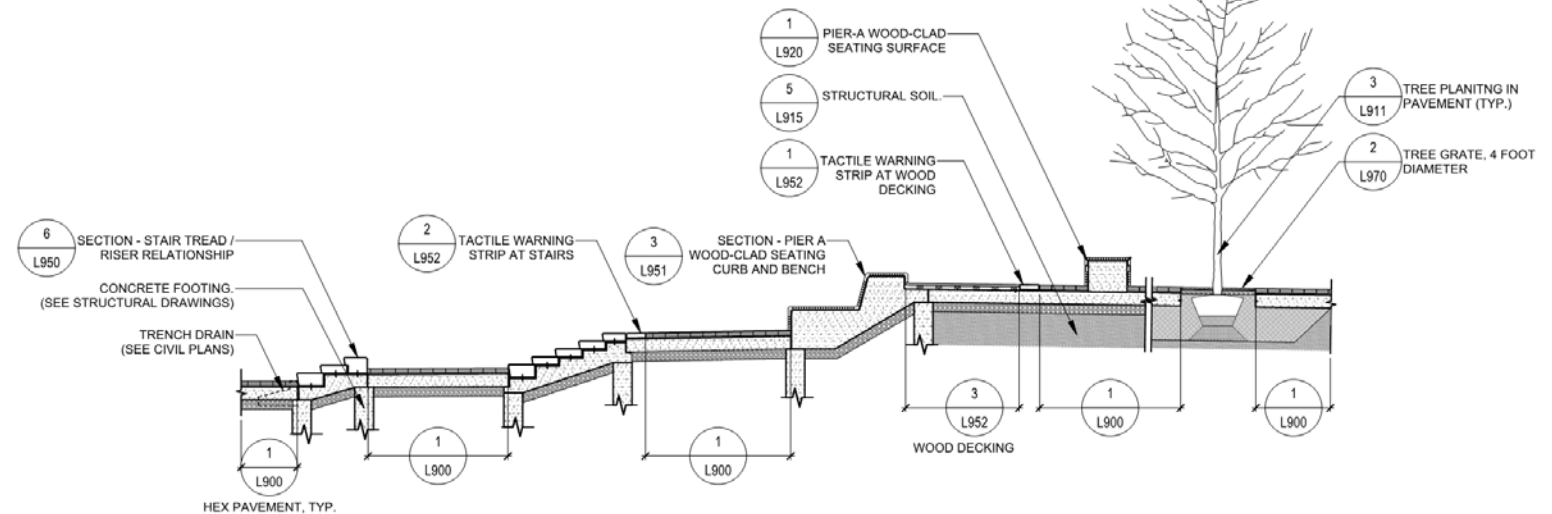
NEW YORK
STATE OF
OPPORTUNITY.

**Battery Park
City Authority**

Package 4: Pier A Plaza Overview

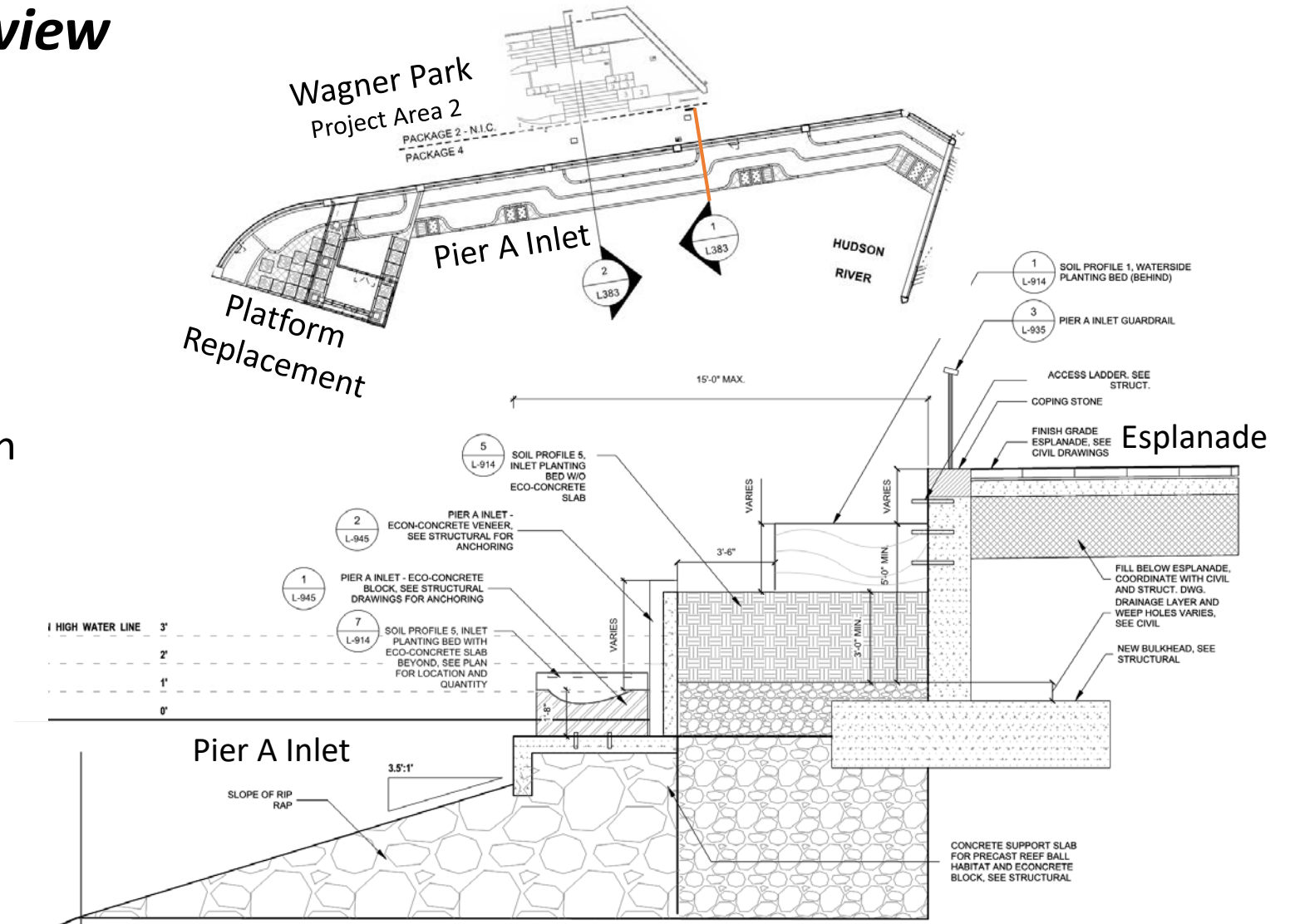


- Site section
 - Pier A Plaza entrance grade raised.
 - Seating and Amphitheater Step Areas



Package 4: Pier A Inlet Overview

- Improvements:
 - Remove esplanade platform and replace with open metal grating.
 - Replace Rip-Rap Shoreline with Econcrete blocks to enhance ecosystem habitat.
- Site section
 - Stacked Econcrete blocks.



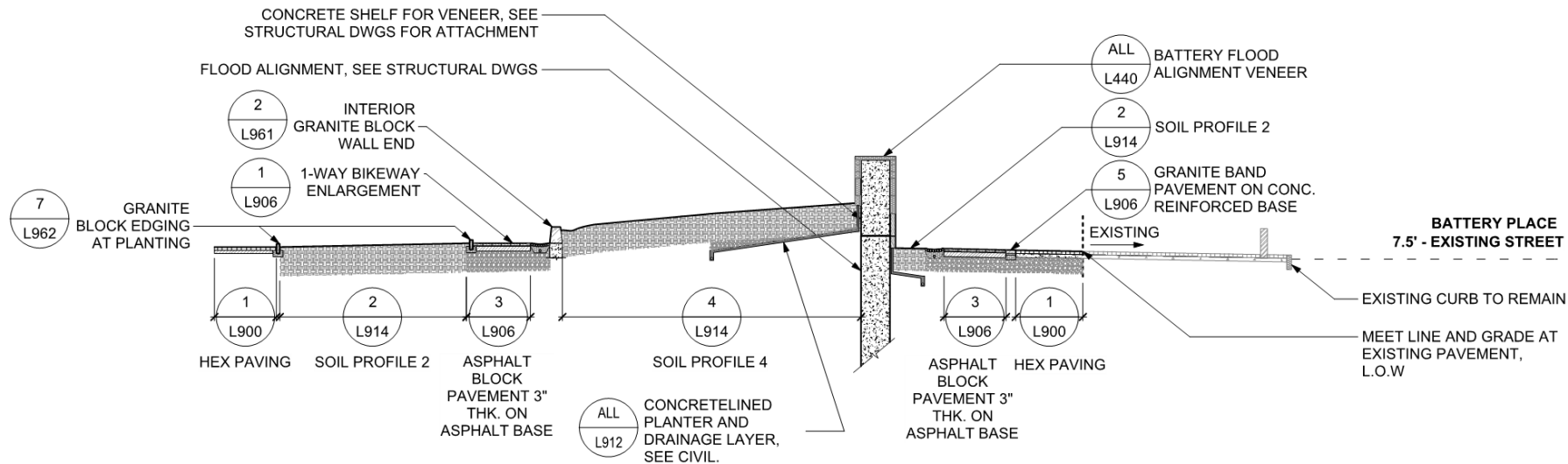
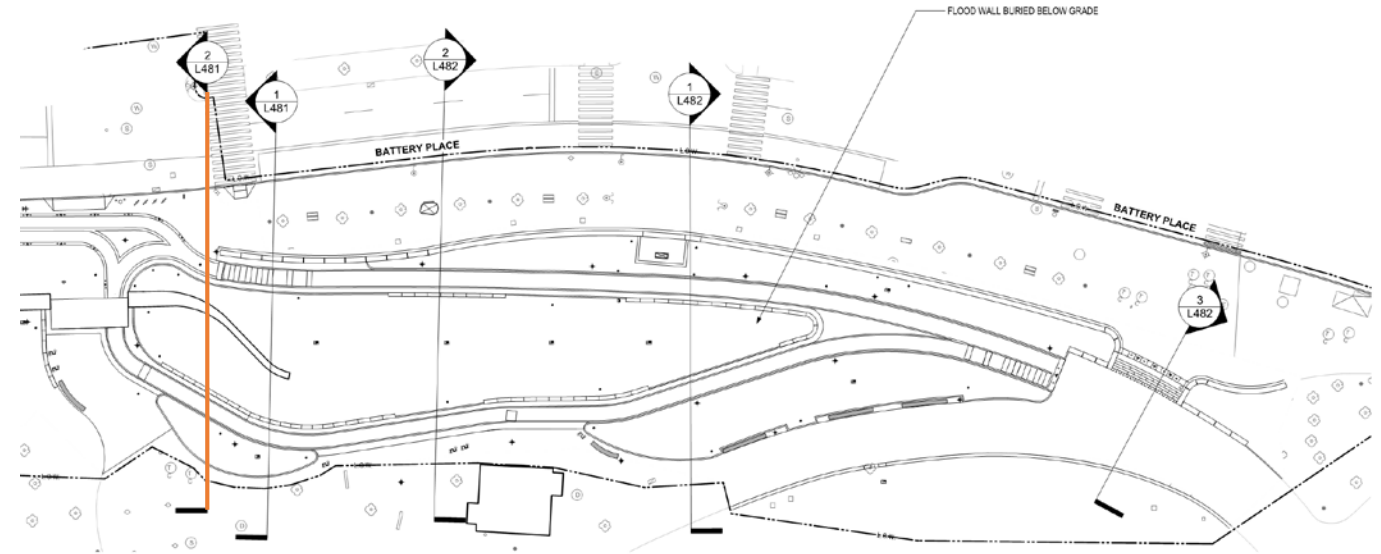
Package 4: Re-Aligned Bikeway and Floodwall Overview



View of Re-aligned Bikeway and Exposed Floodwall

Package 4: Re-aligned Bikeway and Floodwall Overview

- Site section
 - Exposed Floodwall



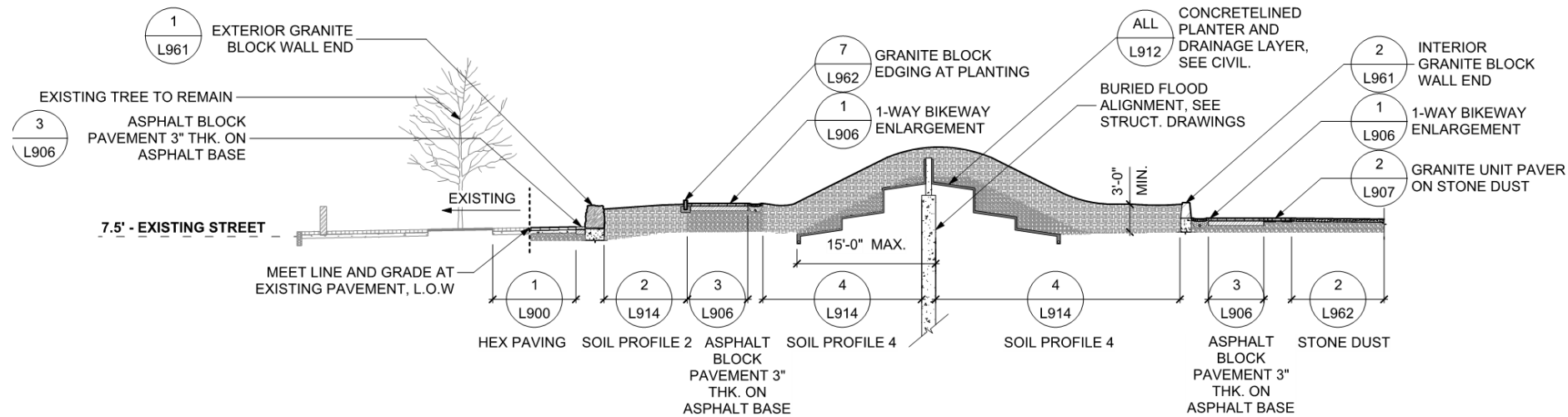
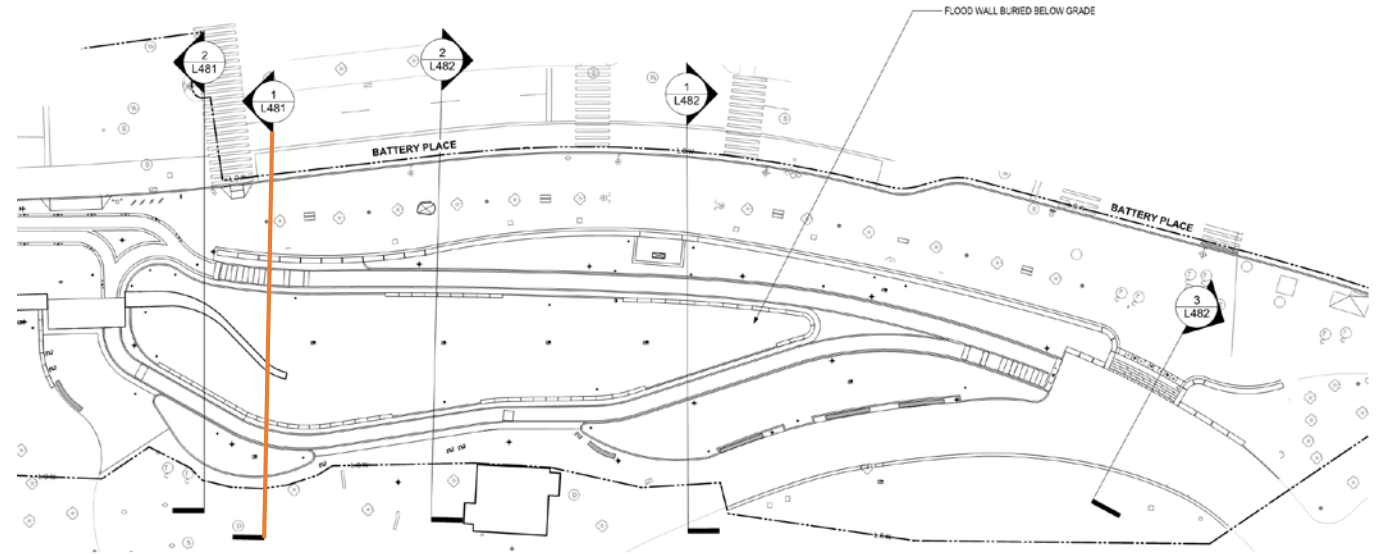
Package 4: Re-Aligned Bikeway and Berm Overview



View of Re-aligned Bikeway and Landscaped Berm over the Floodwall

Package 4: Re-aligned Bikeway and Berm Overview

- Site section
 - Floodwall buried into berm.
 - Planting soil at berm incorporates Geofiber Reinforced Horticultural Subsoils (See Specs)



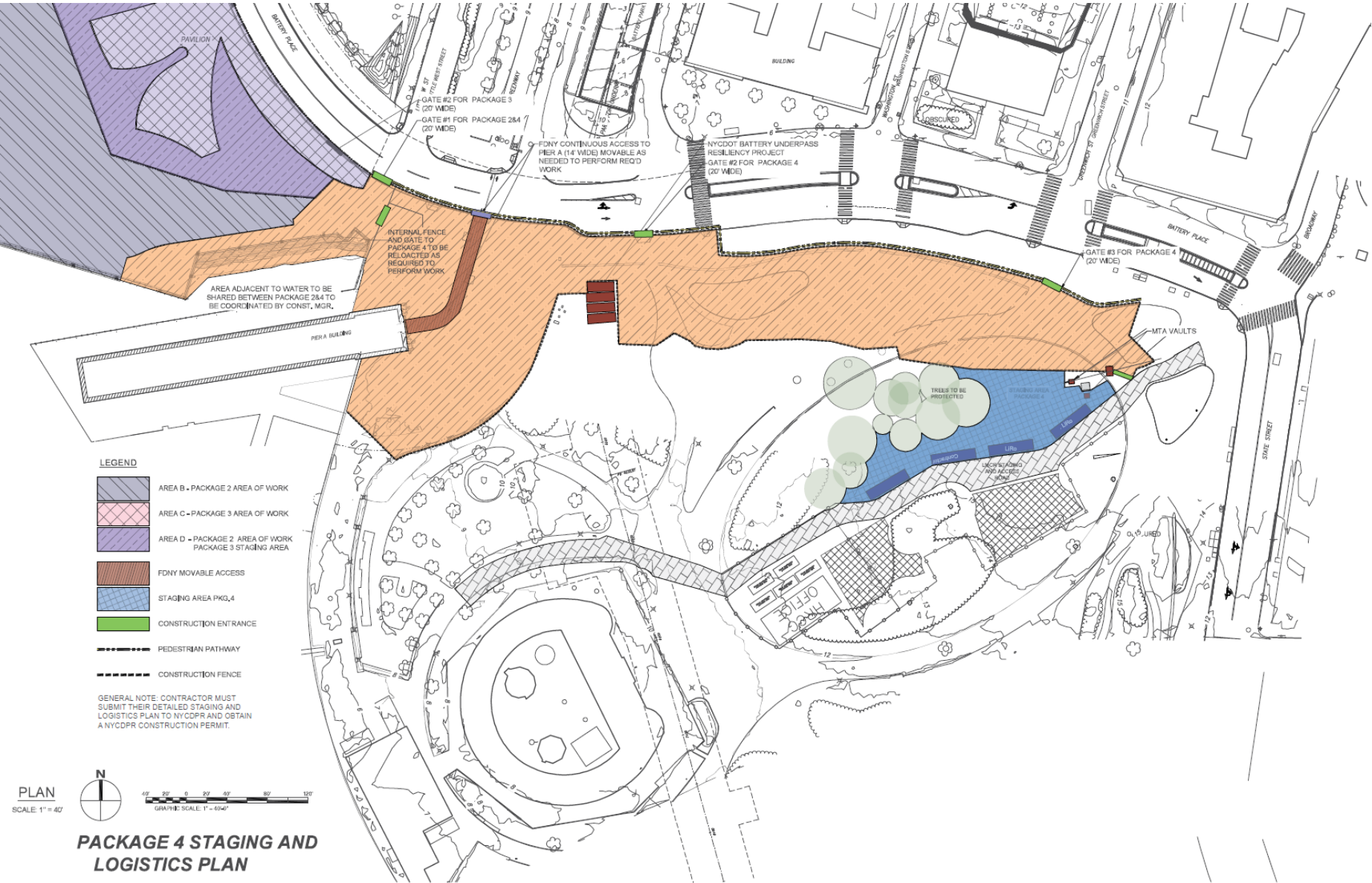


Package 4: Construction Overview (LiRo Group)



**Battery Park
City Authority**

Pier A and Battery Site Logistics



PACKAGE 4 STAGING AND LOGISTICS PLAN

Note: NSI Work Not Shown



Battery Park
City Authority

Package 4: Pier A/Battery/NSI Requirements and Coordination

- Coordination
 - Adjacent BPCA and EDC Contractors
 - NYCDOT Underpass project
 - Pier A Access/Emergency Egress/FDNY
 - Work restrictions- in water work, holiday embargo. Etc.
 - NYCDPR Construction Permit
 - Archeological and Vibration Monitoring
- MPT
 - Flaggers- required for all vehicles entering and exiting the site
 - Two phase MPT for bikes and peds
 - Lane Closures for Utility Work- night time and off shift
 - Tunnel closure- night time/off shift
 - 9A lane closures – night time/off shift

Package 4: Pier A/Battery/NSI Schedule and Contract Items

- Procore Construction Management Software
- Safety and Health Requirements- full-time, dedicated SSM
- CPM Schedule- Primavera baseline and regular monthly update submissions
- Site Security Guard/Security Lighting

Package 4: Pier A/Battery/NSI Schedule and Contract Items

- Anticipated Notice to Proceed: May 2023
- Substantial Completion Milestone: 20 Months from NTP
- Final Completion Milestone: 26 months from NTP
- Project Labor Agreement
- Standard Form of Contract

Package 4: Pier A/Battery/NSI Procurement Schedule

Action	Dates
RFP Issue Date	December 9, 2022
Pre-Proposal RSVP Date	December 15, 2022 by noon EST
Pre-Proposal Meeting	December 16, 2022 10:00 a.m. (VIRTUAL)
Site Walk Through (Mandatory)	December 16, 2022 11:30 a.m. at 22 Battery Place
Deadline to submit questions via email to Michael.Lamancusa@bpca.ny.gov	January 10, 2023 by 12:00npm EST (by email only)
BPCA's Response to Substantive Questions	January 24, 2023 (by email)
Proposal Due Date	February 7, 2023 by 1pm EST
Approximate Contract Start Date	May 2023

Package 4: Pier A/Battery/NSI

Questions & Answers

- To be submitted via email to Michael.Lamancusa@bpca.ny.gov
- Responses will be posted via Addendum to BPCA.ny.gov

ATTACHMENT #2
SITE WALK-THROUGH –
12/16/2022 ATTENDEE LIST

(ATTACHED)

BATTERY PARK CITY AUTHORITY

One World Financial Center

NEW * YORK

MEETING SIGN-IN SHEET

Subject: South BPCR: Plot A Plaza / Battery Site Work & NSF Construction & Sus.

Date: 12/16/22 11:30 AM

NAME	AFFILIATION	TELEPHONE	FAX
Michael L. Marusa	BPCA	212.417.4335	N/A
IF LEWIS	LIRo	352.439.300	N/A
LAURA GRAY	LIRo	917.306.4124	N/A
Samin Stanovic	JRCroz	732-675-3387	N/A
Bruce Lange	Northeast Rensco	732-55-6100 ²⁰¹⁷⁴	—
AL RODRIGUEZ	AKELA	(914) 224-6573	N/A
JIM CORBETT	NORTHEAST RENSco	732-718-5562	N/A
Victor Althoff	Flood Break	219-561-1323	valthoff@floodbreak.com
Oleg Shayko	PADILLA CONSTRUCTION	516.338.6848	N/A
John O'Neil	Recon Group	917.831.0350	N/A
Nick Schurick	Tully Construction	918.446.7000	—
RAY Denaro	D'UNDRIGO LLC	718.832.5700	—
Moe Doughton	Restani	347.621.8602	—
GUY HALPERIN	TULLY	516 718.446.7000	—
MINA G. ARABO	NAVILLIUS	212.750.1872	—
DIPAK SHAH	SLS	212.929.2100	—
Michael Soliman	AECOM	646.498.3973	—
Cecile XU	AECOM	646.897.7305	—
Kristen Capaldi	AECOM	212-896-0210	—

BATTERY PARK CITY AUTHORITY

One World Financial Center

NEW * YORK

MEETING SIGN-IN SHEET

Subject:

Date:

NAME	AFFILIATION	TELEPHONE	FAX
FRANK Troiani	EE CRJZ	929-422-0042	
PETER Downes	NAVILLUS	212 750 1868	
Rich FRANCE	RCC	201-412-8489	
LUKIO RIVERA	ATX & N	845-661 3362	
GEORGE Alessio	SWPRT	212 929 2100	
BYRON LOPEZ	C.A.C. INDUSTRIES INC	(917) 935-2107	
PAUL PANCHO	CITNALTA CONST	631 591 1110	
Anton SAID	Posillico	917-648-8249	
Sam Ahmed	Posillico	718-431-514	
Mike Shannon	Kelco	973-6470129	